

TerraEvoca
Edition 2021

MATTEOBRIONI



Matteo Brioni

Clay For Architecture

Our luxury is to respect the environment

Ecological consciousness and the awareness that what is produced is bound to the beauty of a unique material like raw earth.

An ongoing quest for the perfect balance between beauty, harmony and well-being in using earth in architecture and design with the goal of providing high performance together with low environmental impact, creating three dimensional surfaces and transferring the earth's sensory stirring to spaces created by man.

Partners

This company's uniqueness has paved the way towards important partnerships in different sectors, among which can be mentioned those recently developed with Ferrari, Furla, Bulgari, Lavazza, Almana Group, Q8, Armani/Dada, Poliform, Valextra, Bulthaup, Agape, Bally, Baleri Italia, Baxter, Lema, Elmar, Molteni&C, Wall&Decò. Participating in multiple collaborations, for developing new products and solving complex problems or meeting specific needs, has often opened the way towards sources of innovation for the company. Matteo Brioni offers a full range of expertise in raw earth – from feasibility studies to design and installation – and the company considers each collaboration a useful opportunity for exchange and the sharing of expertise and knowledge.

Institutional and academic collaborations



United Nations
Educational, Scientific and
Cultural Organization



UNITWIN Network in
Global Pharmacy
Education Development



Matteo Brioni collaborated with prestigious Politecnico di Milano and its Department of Chemistry, Materials and Chemical Engineering “Giulio Natta” that was founded in 2001, with solid foundations and with skills to face all the engineering challenges that involve the correlations between the molecular aspects of the material and the application characteristics of the products.

The Department is divided into different Sections whose scientific and technological development activities cover the macro areas: Energy, Safety and Environment; Health and Life Sciences; Smart and Sustainable Industry.

Among these, the Materials Science and Engineering section stands out, with which a collaboration is being carried out for the LCA Studio of Brioni products in order to obtain EPD marking. The members of the section cultivate skills in the study of structure - property relationships, design and preparation, production and transformation processes, characterization, degradation, durability and conservation, restoration and recycling of materials and products, having an engineering and industrial interest. Furthermore, the section's heritage is the complex of knowledge relating to materials for sustainable development, for the environment and energy, for construction, durability, and cultural heritage, for advanced manufacturing and design, and for life sciences and technology.

The Department has more than 120 teaching staff members, 50 technical-administrative staff, over 150 PhD students and almost 50 research fellows.

Matteo Brioni also Collaborated with the University of Cagliari, the University of Basilicata and UNESCO. The DICAAR is the polytechnic expression of the University of Cagliari in which numerous multidisciplinary skills converge. Its constitution was born from a cultural, didactic and scientific oriented and defined project which presupposes an open and inclusive point of view. The scientific culture of design, planning, preservation, recovery and enhancement of the environment, landscape, architectural and historical-archaeological heritage, structural and infrastructural heritage, territory and georesources in the broadest sense are the purposes that the Department proposes. In particular, Matteo Brioni has been collaborating for years as an active member with the course which is part of the UNITWIN / UNESCO Chair Network “Earthen architecture, building cultures and sustainable development” held by teacher Maddalena Achenza.

Matteo Brioni
recent partnerships

Aēsop®

agape

ALC
ALMANA GROUP W.L.L.

ALBED
MILANO 1944

ARMANI / Dada

BALERI ITALIA


BALLY

baxter
MADE IN ITALY

BVLGARI

bulthaup

.elmar



FURLA
SINCE 1927 ITALY

HENRYTIMI

JIL SANDER

LAVAZZA
TORINO, ITALIA, 1895

LEINA

LINVISIBILE

 Loro Piana

NAR
SA costruzioni

Mikael Jansson

pacteam
group

PAOLA C.
Milano

Poliform

Q8 

SOCIETY
— LIMONTA —

spotti
MILANO

TECHNOGYM

Valextra

Wall&decò

MATTEOBRIONI

TerraEvoca 4



TerraEvoca

TerraEvoca is the totally bespoke wall finishes created by Matteo Brioni. It generates tactile surfaces where light get into a full symbiosis with clay.

Its uniqueness in the clay plastic modelling technique comes from the expertise of Matteo Brioni's master craftsmen.

It's exclusive in the true sense of the word as it is a fully customized decoration that makes each wall application unrepeatable but always wonderful.

Matteo Brioni's TerraEvoca is created applying on wall or boiserie multiple natural clay layers: it starts from a minimum of two layers up to four.

It is proposed into four main variants: Damasco, Floreal, Travertino and Tweed but its realization could be adapted in order to completely intercept the customer's requests.



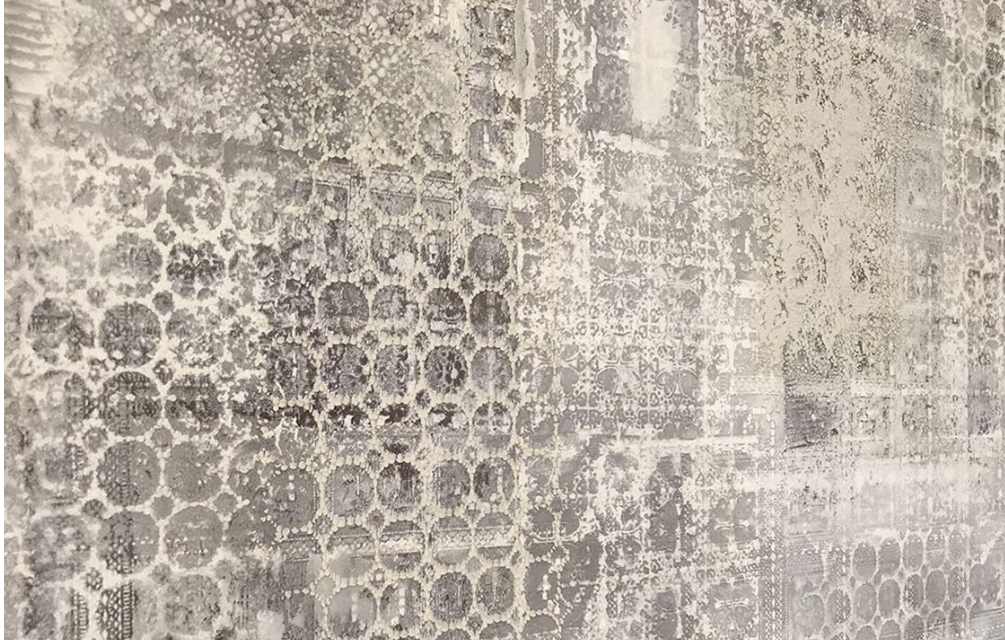
Matteo Brioni's TerraEvoca natural clay finishes can be installed on boiserie, furniture or bespoke panel systems. Here on the left it's applied on a kitchen furniture made by *Elmar Cucine*.

On the bottom, with different pattern and colors you may appreciate its application on *KeySbabo* furniture: the result is completely different but always perfect.



Matteo Brioni's TerraEvoca is a "ton sur ton" decoration: made of multiple clay layers and different colors.





TerraEvoca is based only on clay and Matteo Brioni's passion and sincere belief in his ethical principles: anyone in the interior design industry speaks about natural materials and ecological solutions, Matteo Brioni instead realizes them.

Here you see Damasco (left) and Floreal (right) wall installations.

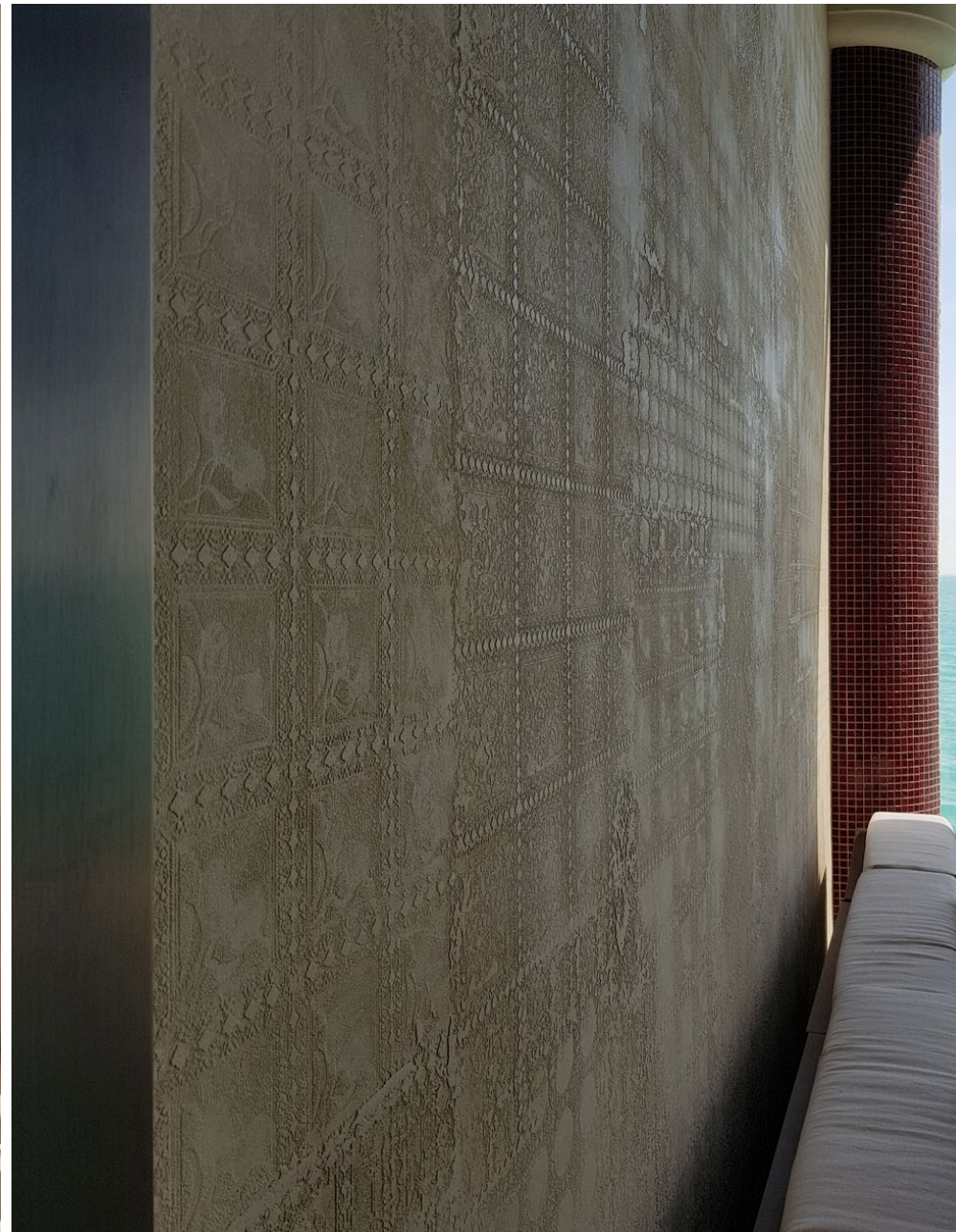


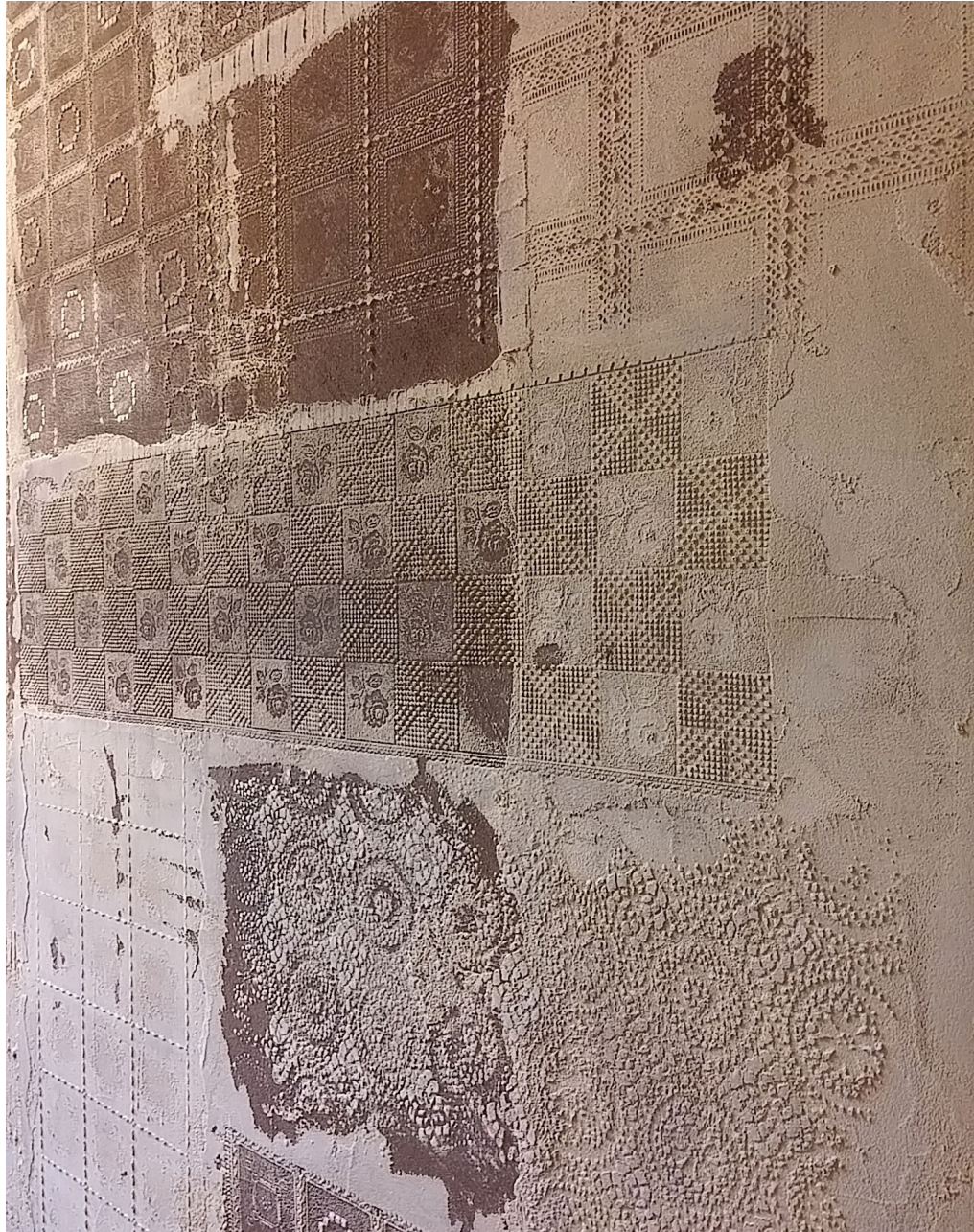


Matteo Brioni showroom, ADV of IP Industrie SpA

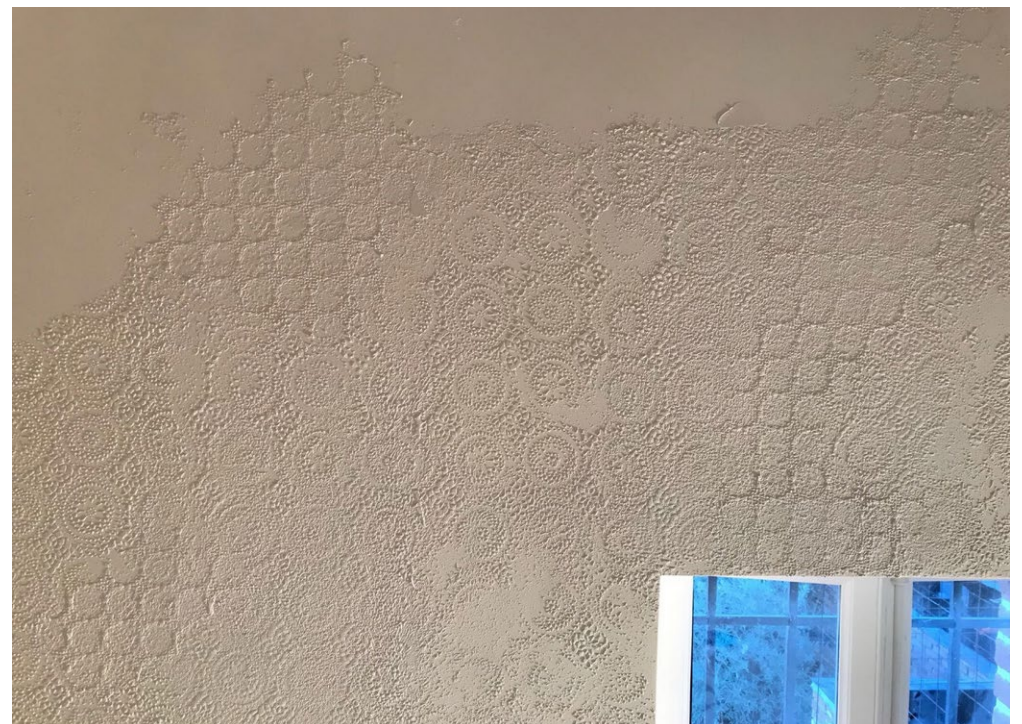


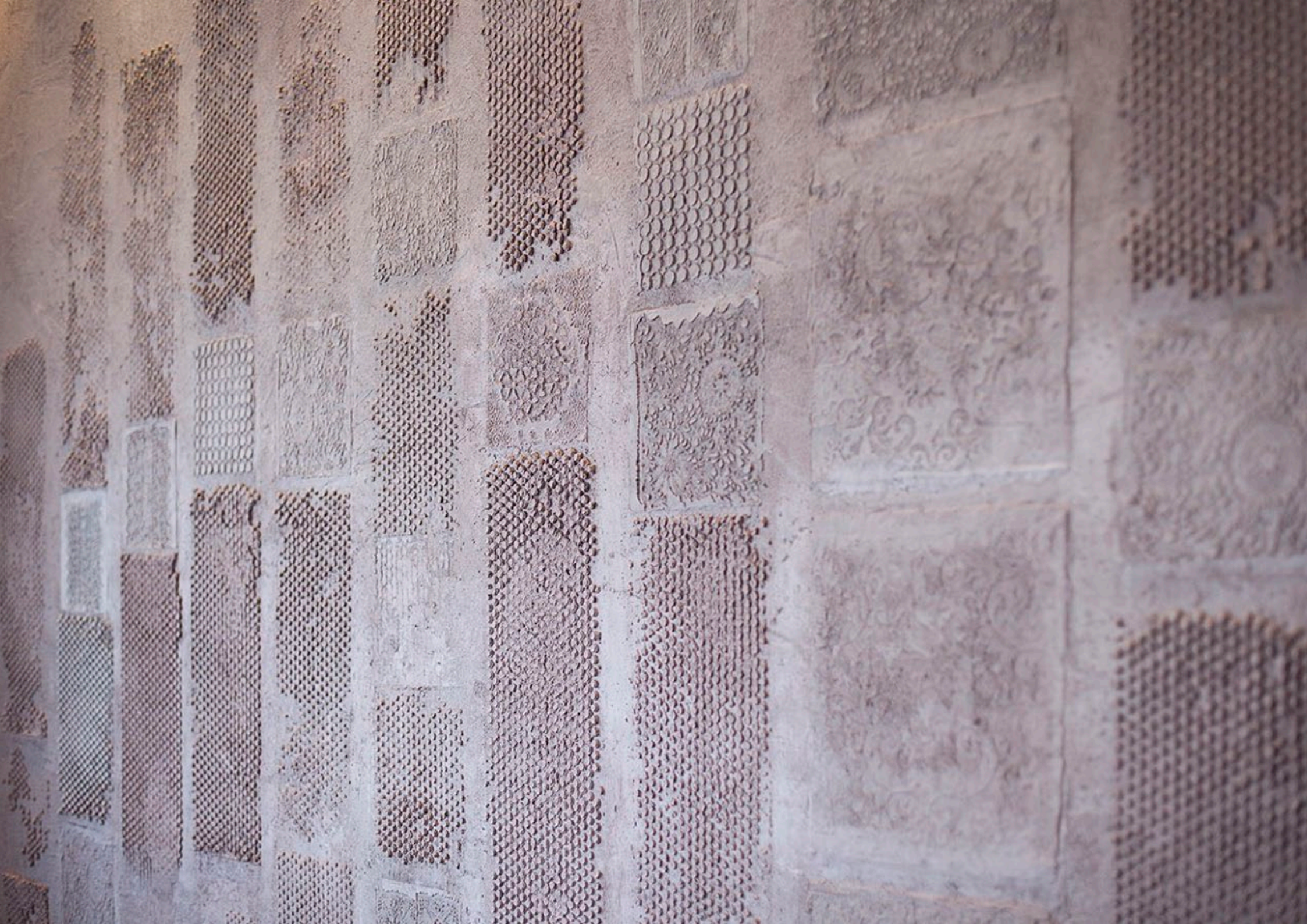
Katara Restaurant, Doha, Qatar





Matteo Brioni's really natural TerraEvoca is unique and totally customizable because it's handcrafted by our artisans personally. Here you see different Damasco applications: a 4 layers with a Panna & Pepe Nero colors (left), a 2 layers with a Cannella color (top-right-center), a 4 layers Pepe Nero (top-right) and a double layer with a Latte tonality.





Showroom Squassabia, TerraEvoca is here applied over both a wall and a boiserie

Agape 12 showroom: TerraEvoca installed on a bathroom wall.



KeySbabo, kitchen furniture, TerraEvoca Damasco with 2 layers with a Sale Grigio color

TerreEvoca Damasco with a custom blue tone in a Venice restaurant

TerraEvoca
Damasco



Showroom Elmar Cucine, TerraEvoca Damasco on furniture made with 4 layers of Cipria, Panna and Pepe Nero predominant tonalities



TerraEvoca, unexpected functionalities under natural clay surfaces

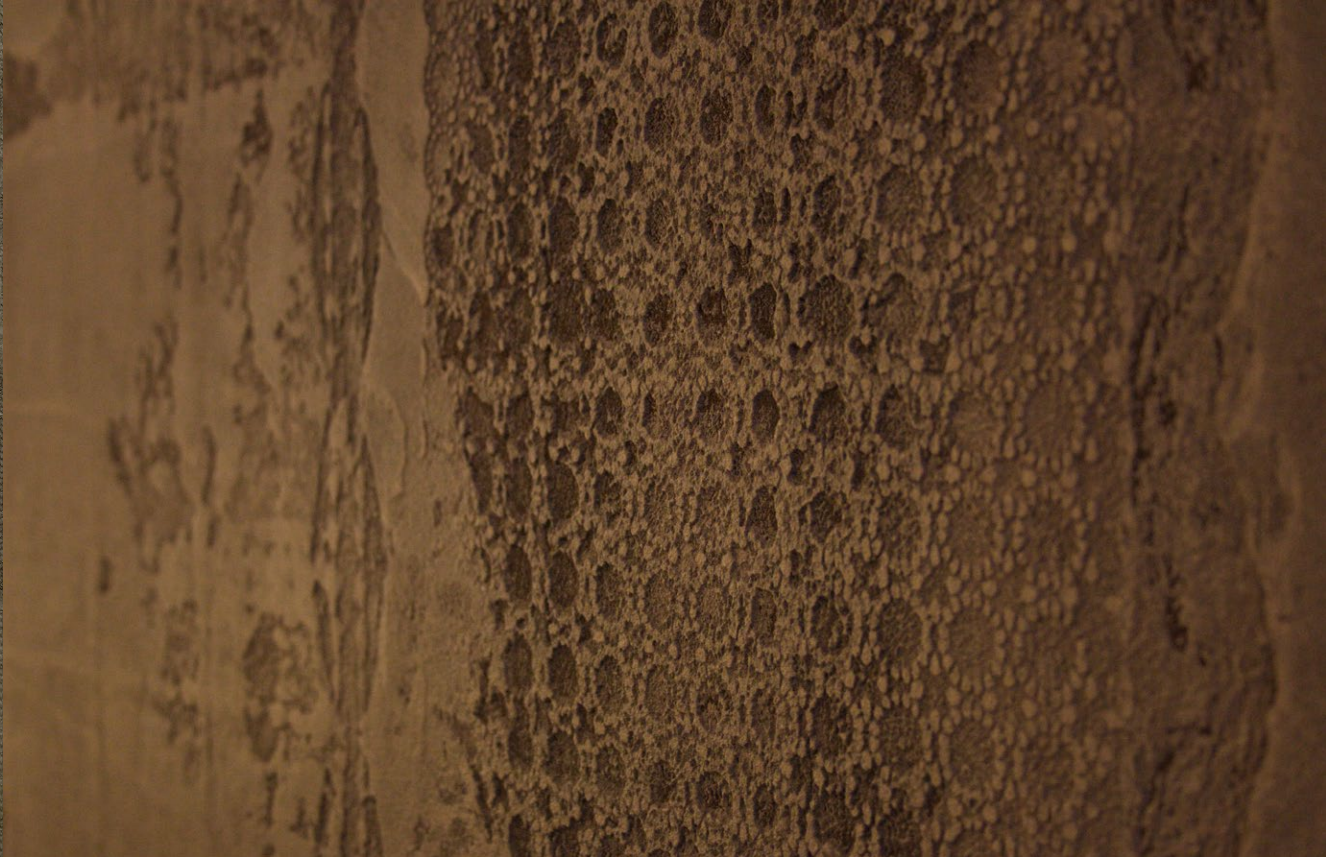


Another image of Showroom Sqassabia, TerraEvoca is here applied over both a wall and a boiserie



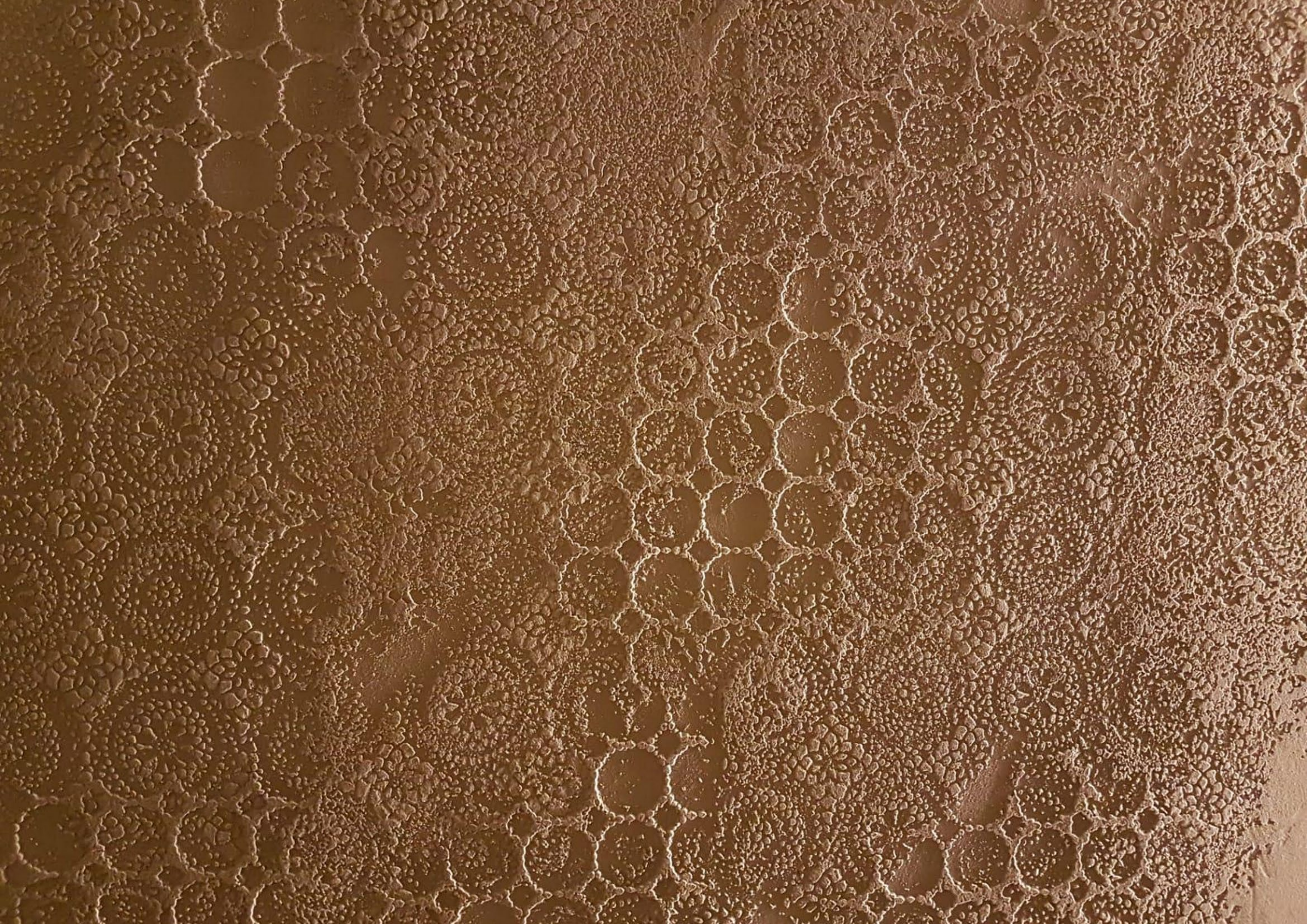
TerraEvoca applied over wall (above) and a boiserie (below)





TerraEvoca could be applied on curved surfaces









TerraEvoca in three very different possible installation: on kitchen furniture (left), in a bathroom (top right) and over a panel system (bottom right)



TerraEvoca, when light and clay match together to become art: 2 layers and Panna tonalities





TerraEvoca 2 layers with a custom color (left) obtained mixing ground local seashells with clay (right), Katara Restaurant, Doha, Qatar





Matteo Brioni's TerraEvoca 2 layers with Ardesia tonalities applied on panels for showroom LINVISIBLE





Matteo Brioni's TerraEvoca applied on panels and walls for showroom Squassabia



Matteo Brioni's TerraEvoca 4 layers with Panna and Polvere tonalities applied on panels for a stand in Dubai Design Week



Matteo Brioni's TerraEvoca generates tactile surfaces where light get into a full symbiosis with clay



TerraEvoca is the exclusive Matteo Brioni's customized decoration that makes each wall application unrepeatable but always wonderful.



In Matteo Brioni's TerraEvoca different textures and colors intersect and overlap in a game of lights and shades that creates surprising prospects and depths.







Travertino is the new customized and sober variation of Matteo Brioni's TerraEvoca





TerraEvoca Tweed is an hybrid surface: here metal tonalities and clay match together to create a surprisingly pleasant result.



TerraEvoca Tweed could be applied both on wall and boiserie, like in this kitchen environment.





TerraEvoca is totally bespoke and customizable: our clients could ask for any variation in terms of color, pattern and detail definition.



TerraEvoca: this custom installation has been called "dune" and it's a special realization requested by our clients.



TerraEvoca variants could be potentially infinite: it's only up to your imagination and our extremely qualified artisans.



TerraEvoca research on variants: the custom “dune” has been created mixing local seashells with clay. On the left they are still visible, on the right they have been ground

Custom







MatteoBrioni's TerraEvoca is unique and totally customizable because it's handcrafted by our artisans personally: you choose the mood, we make it.





MENZIONE D'ONORE

Prodotto
**LA TERRA SECONDO
MATTEO**

Designer
Studio Irvine

Azienda
Matteo Brioni

Giuria
Denis Santachiara, *presidente*
Luca Bressan, Virginio Briatore
Jin Kuramoto, Päivi Tahkokallio

ADI ADI ASSOCIAZIONE
PER IL DISEGNO
INDUSTRIALE

MATTEOBRIONI

Matteo Brioni srl

•Strada Comunale Ronchi 77 •46023 •Gonzaga •Mantova •Italy

•+39 (0)376 528862

•info@matteobrioni.com

•www.matteobrioni.com