

In Use - showrooms  
Edition 2021

**MATTEOBRIONI**





Matteo Brioni

Clay For Architecture

Our luxury is to respect the environment

Ecological consciousness and the awareness that what is produced is bound to the beauty of a unique material like raw earth.

An ongoing quest for the perfect balance between beauty, harmony and well-being in using earth in architecture and design with the goal of providing high performance together with low environmental impact, creating three dimensional surfaces and transferring the earth's sensory stirring to spaces created by man.

#### Partners

This company's uniqueness has paved the way towards important partnerships in different sectors, among which can be mentioned those recently developed with Ferrari, Furla, Bulgari, Lavazza, Almana Group, Q8, Armani/Dada, Poliform, Valextra, Bulthaup, Agape, Bally, Baleri Italia, Baxter, Lema, Elmar, Molteni&C, Wall&Decò. Participating in multiple collaborations, for developing new products and solving complex problems or meeting specific needs, has often opened the way towards sources of innovation for the company. Matteo Brioni offers a full range of expertise in raw earth – from feasibility studies to design and installation – and the company considers each collaboration a useful opportunity for exchange and the sharing of expertise and knowledge.

## Institutional and academic collaborations



Matteo Brioni collaborated with prestigious Politecnico di Milano and its Department of Chemistry, Materials and Chemical Engineering “Giulio Natta” that was founded in 2001, with solid foundations and with skills to face all the engineering challenges that involve the correlations between the molecular aspects of the material and the application characteristics of the products.

The Department is divided into different Sections whose scientific and technological development activities cover the macro areas: Energy, Safety and Environment; Health and Life Sciences; Smart and Sustainable Industry.

Among these, the Materials Science and Engineering section stands out, with which a collaboration is being carried out for the LCA Studio of Brioni products in order to obtain EPD marking. The members of the section cultivate skills in the study of structure - property relationships, design and preparation, production and transformation processes, characterization, degradation, durability and conservation, restoration and recycling of materials and products, having an engineering and industrial interest. Furthermore, the section’s heritage is the complex of knowledge relating to materials for sustainable development, for the environment and energy, for construction, durability, and cultural heritage, for advanced manufacturing and design, and for life sciences and technology.

The Department has more than 120 teaching staff members, 50 technical-administrative staff, over 150 PhD students and almost 50 research fellows.

Matteo Brioni also Collaborated with the University of Cagliari, the University of Basilicata and UNESCO. The DICAAR is the polytechnic expression of the University of Cagliari in which numerous multidisciplinary skills converge. Its constitution was born from a cultural, didactic and scientific oriented and defined project which presupposes an open and inclusive point of view. The scientific culture of design, planning, preservation, recovery and enhancement of the environment, landscape, architectural and historical-archaeological heritage, structural and infrastructural heritage, territory and georesources in the broadest sense are the purposes that the Department proposes. In particular, Matteo Brioni has been collaborating for years as an active member with the course which is part of the UNITWIN / UNESCO Chair Network “Earthen architecture, building cultures and sustainable development” held by teacher Maddalena Achenza.

Matteo Brioni  
recent partnerships

Aēsop®

agape

ALC  
ALMANA GROUP W.L.L.

ALBED  
MILANO 1944

ARMANI / Dada

BALERI ITALIA  


BALLY

baxter  
MADE IN ITALY

BVLGARI

bulthaup

.elmar



FURLA  
SINCE 1927 ITALY

HENRYTIMI

JIL SANDER

LAVAZZA  
TORINO, ITALIA, 1895

LEINA

LINVISIBILE

 Loro Piana

NAR  
SA costruzioni

Mikael Jansson

pacteam  
group

PAOLA C.  
Milano

Poliform

Q8 

SOCIETY  
— LIMONTA —

spotti  
MILANO

TECHNOGYM

Valextra

Wall&decò

MATTEOBRIONI

In Use - showrooms 4

Copyright 2021 @ Matteo Brioni srl





MOLTENI  
showroom in Giussano  
project by Ron Gilad























DADA

showroom in Milan

photos by Davide Arena and Andrea Martiradonna











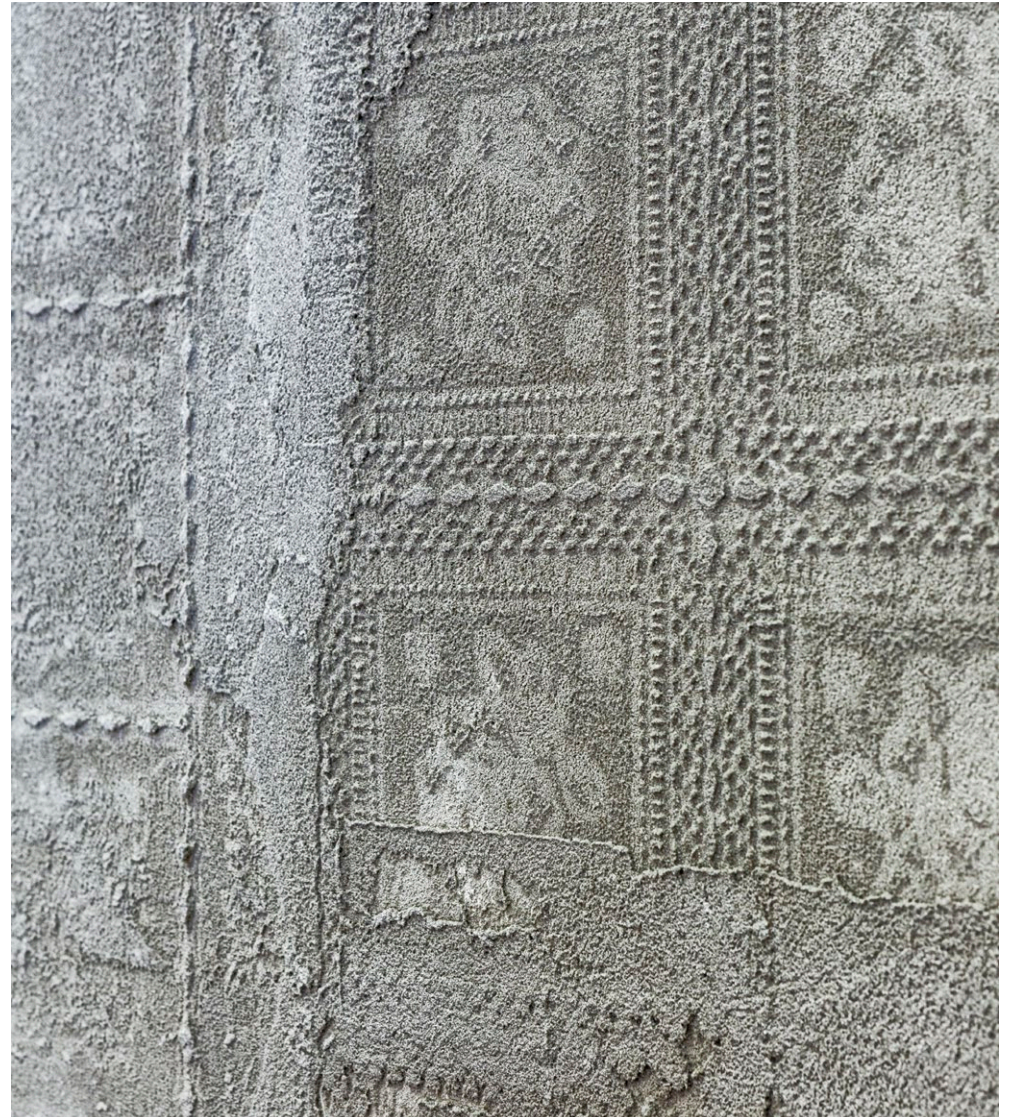




## LINVISIBILE

showroom in Rome

photos by Simone Cappelletti







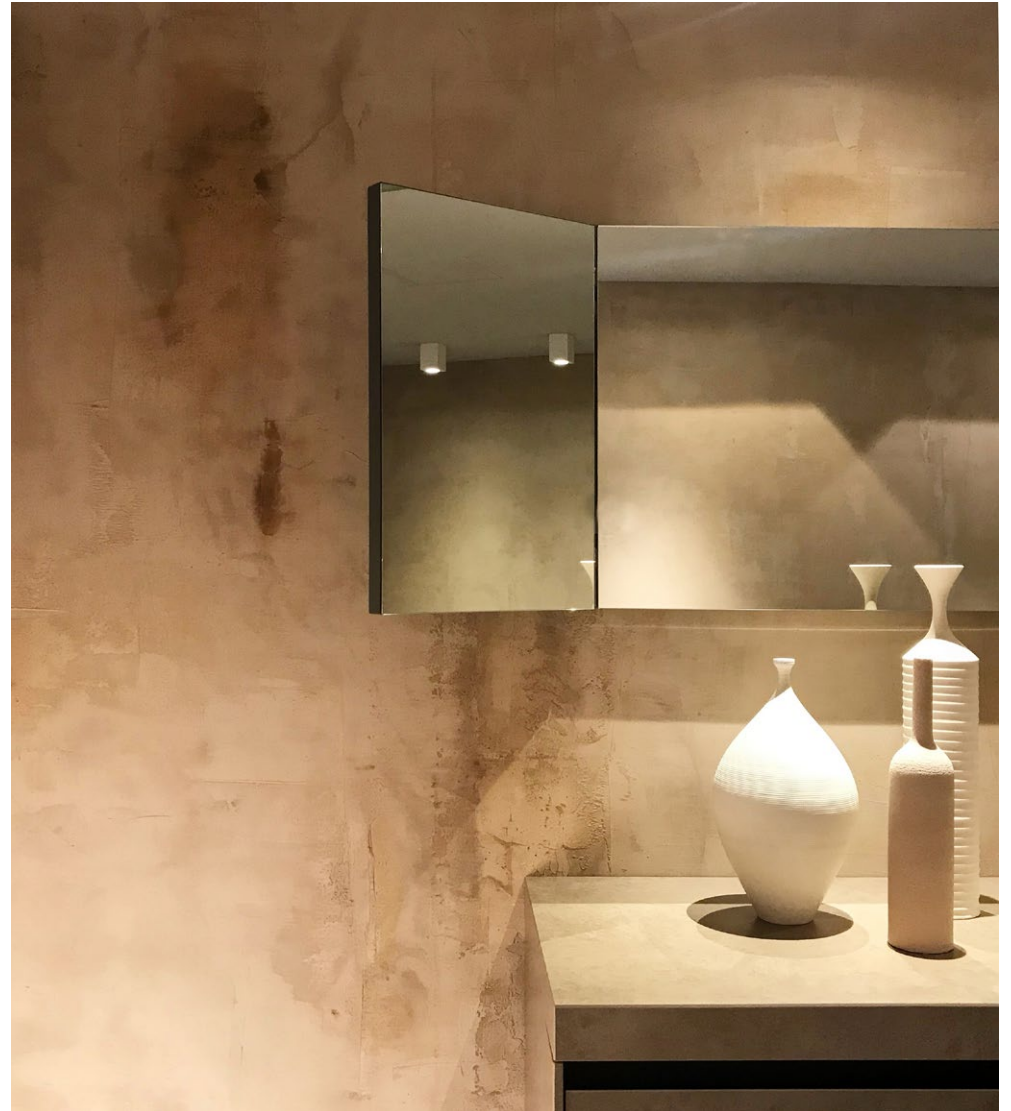
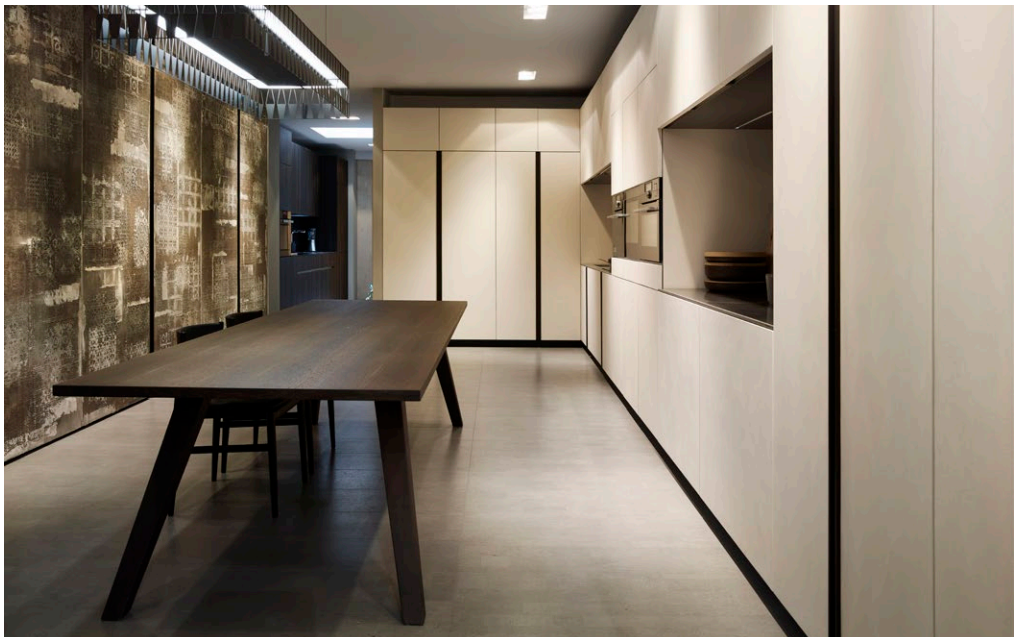








ELMAR CUCINE  
showroom in Milan  
photos by Pietro Savorelli et al



















mar









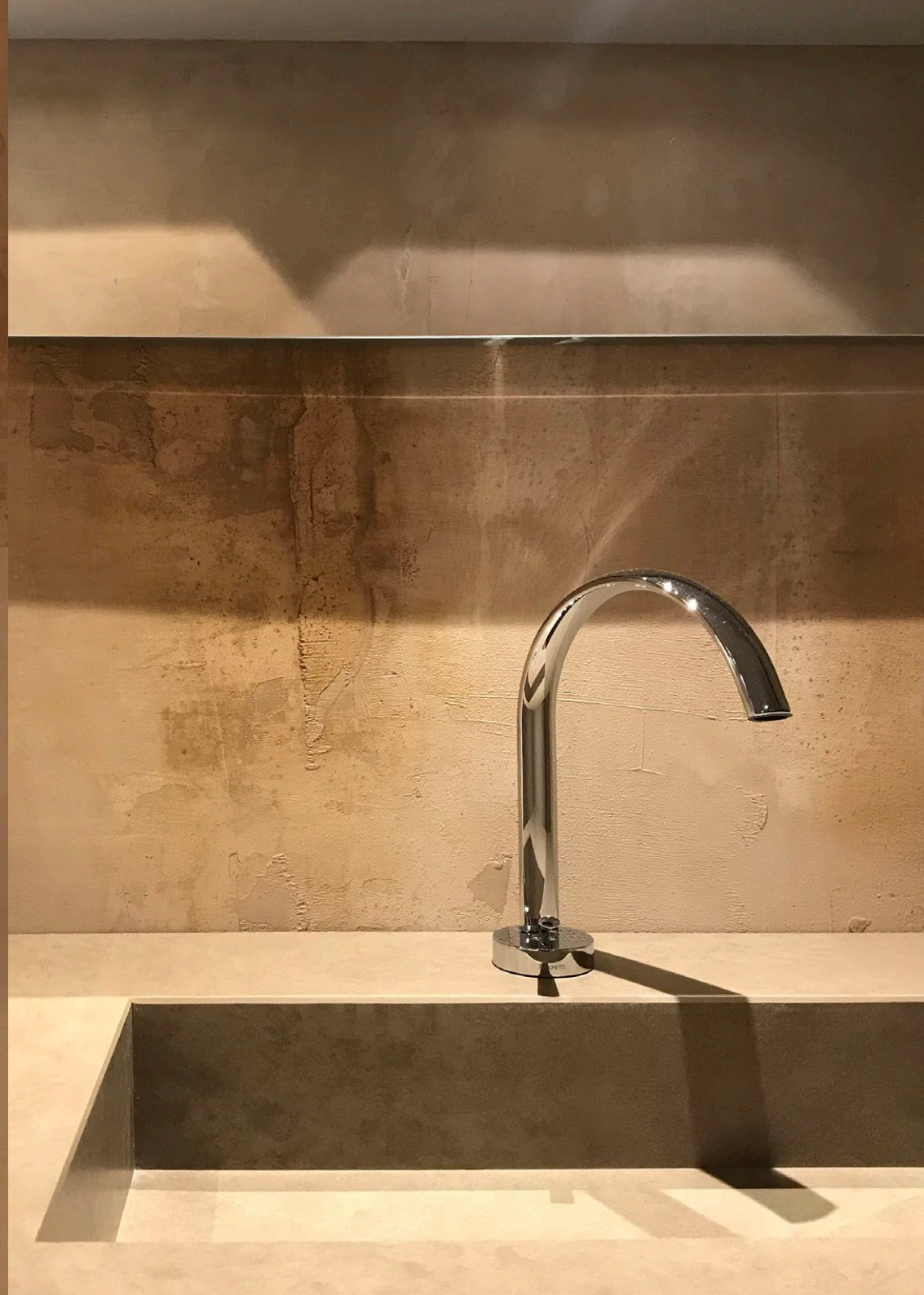
















## AGAPE HEADQUARTERS

Exteriors

Photos by Maurizio Zatacchetto



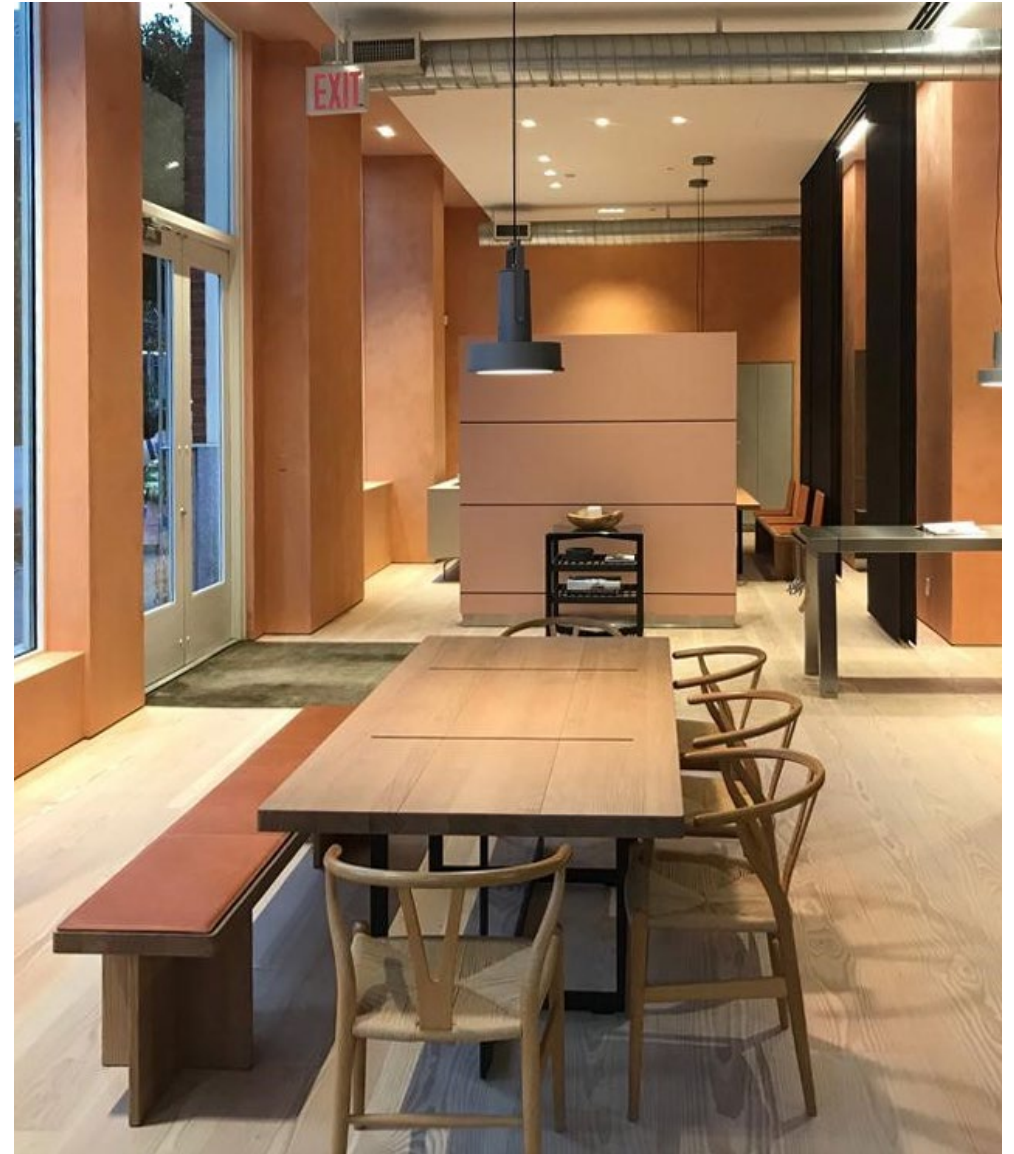








BULTHAUP  
Showroom in New York















AGAPE SHOWROOM  
Photos by Andrea Ferrari







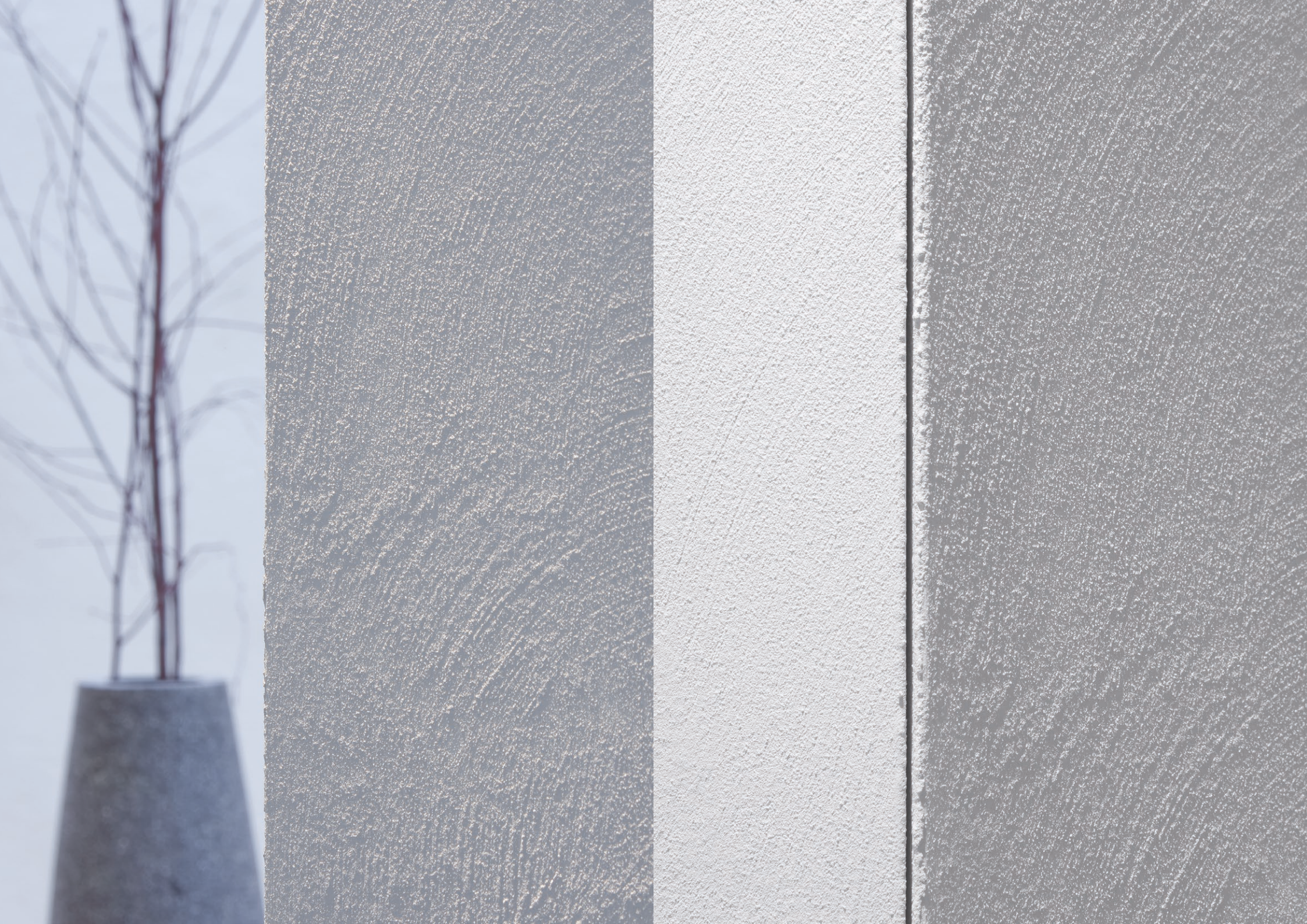




HENRY TIMI  
Showroom in Milan















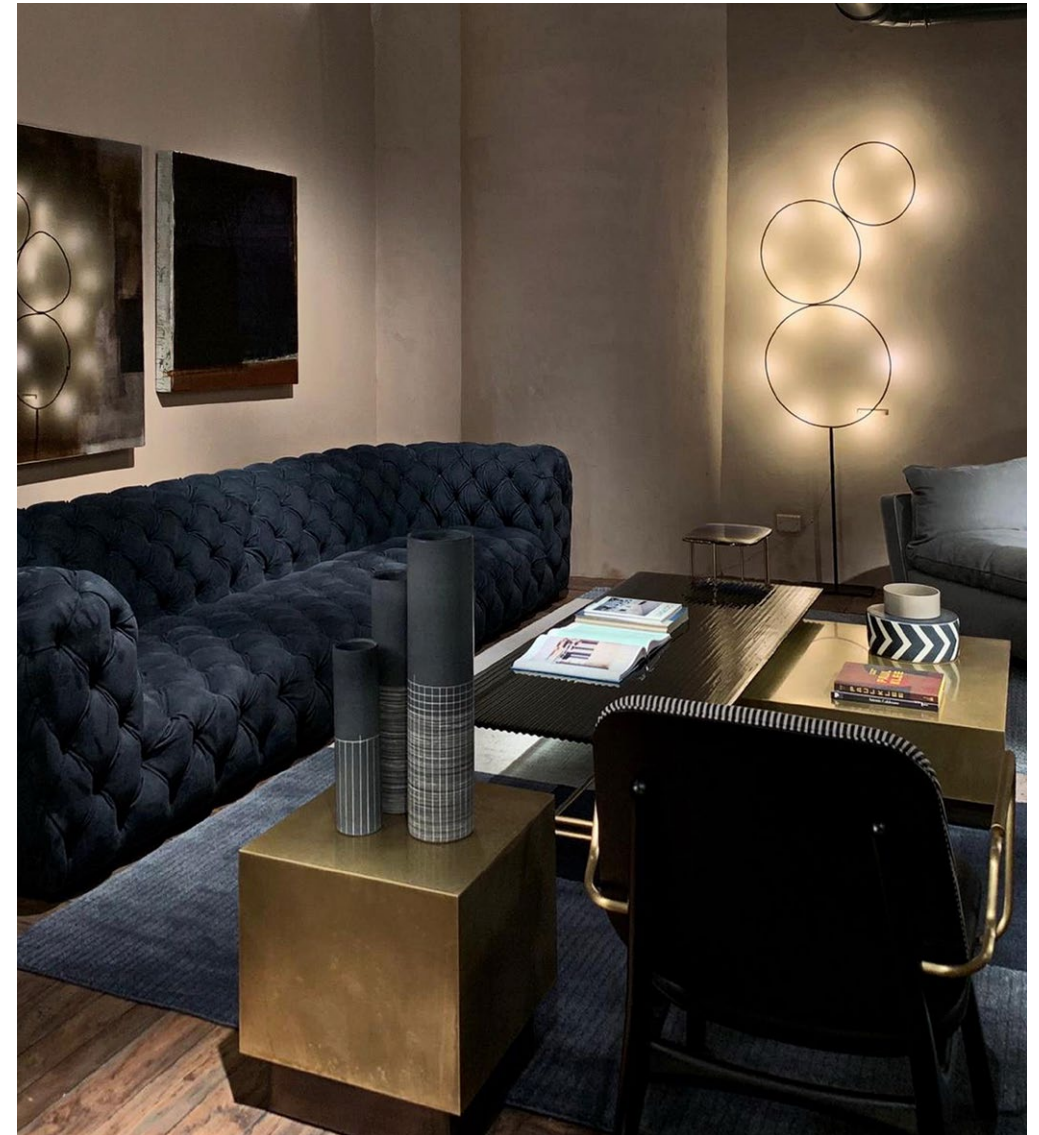




## BAXTER SHOWROOM

Rome

Photos by Silvana Spera



















## SPOTTI

showroom in Milan

project by Marcante Testa, photos by Omar Sartor et al



















LIFE SOCIETY

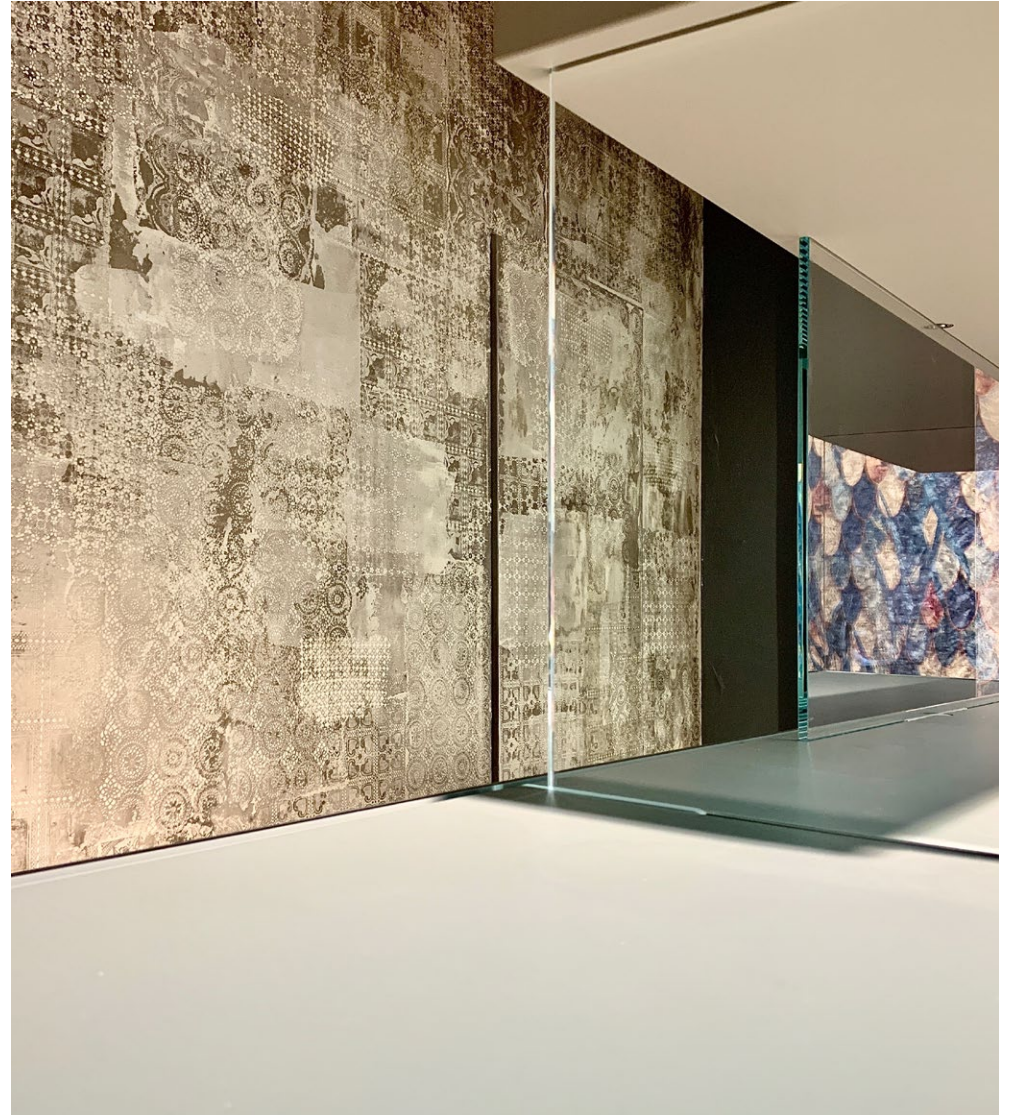




## SQUASSABIA

showroom in Vienna

project by Squassabia arredamenti, photos by Linda Antonietti



































## MENZIONE D'ONORE

Prodotto  
**LA TERRA SECONDO  
MATTEO**

Designer  
**Studio Irvine**

Azienda  
**Matteo Brioni**

Giuria  
Denis Santachiara, *presidente*  
Luca Bressan, Virginio Briatore  
Jin Kuramoto, Päivi Tahkokallio

**ADI** ADI ASSOCIAZIONE  
PER IL DISEGNO  
INDUSTRIALE



# MATTEOBRIONI

Matteo Brioni srl

•Strada Comunale Ronchi 77 •46023 •Gonzaga •Mantova •Italy

•+39 (0)376 528862

•info@matteobrioni.com

•www.matteobrioni.com