

InUse-Bar&Restaurants  
Edition 2021

**MATTEOBRIONI**



Matteo Brioni

Clay For Architecture

Our luxury is to respect the environment

Ecological consciousness and the awareness that what is produced is bound to the beauty of a unique material like raw earth.

An ongoing quest for the perfect balance between beauty, harmony and well-being in using earth in architecture and design with the goal of providing high performance together with low environmental impact, creating three dimensional surfaces and transferring the earth's sensory stirring to spaces created by man.

#### Partners

This company's uniqueness has paved the way towards important partnerships in different sectors, among which can be mentioned those recently developed with Ferrari, Furla, Bulgari, Lavazza, Almana Group, Q8, Armani/Dada, Poliform, Valextra, Bulthaup, Agape, Bally, Baleri Italia, Baxter, Lema, Elmar, Molteni&C, Wall&Decò. Participating in multiple collaborations, for developing new products and solving complex problems or meeting specific needs, has often opened the way towards sources of innovation for the company. Matteo Brioni offers a full range of expertise in raw earth – from feasibility studies to design and installation – and the company considers each collaboration a useful opportunity for exchange and the sharing of expertise and knowledge.

## Institutional and academic collaborations



Matteo Brioni collaborated with prestigious Politecnico di Milano and its Department of Chemistry, Materials and Chemical Engineering “Giulio Natta” that was founded in 2001, with solid foundations and with skills to face all the engineering challenges that involve the correlations between the molecular aspects of the material and the application characteristics of the products.

The Department is divided into different Sections whose scientific and technological development activities cover the macro areas: Energy, Safety and Environment; Health and Life Sciences; Smart and Sustainable Industry.

Among these, the Materials Science and Engineering section stands out, with which a collaboration is being carried out for the LCA Studio of Brioni products in order to obtain EPD marking. The members of the section cultivate skills in the study of structure - property relationships, design and preparation, production and transformation processes, characterization, degradation, durability and conservation, restoration and recycling of materials and products, having an engineering and industrial interest. Furthermore, the section’s heritage is the complex of knowledge relating to materials for sustainable development, for the environment and energy, for construction, durability, and cultural heritage, for advanced manufacturing and design, and for life sciences and technology.

The Department has more than 120 teaching staff members, 50 technical-administrative staff, over 150 PhD students and almost 50 research fellows.

Matteo Brioni also Collaborated with the University of Cagliari, the University of Basilicata and UNESCO. The DICAAR is the polytechnic expression of the University of Cagliari in which numerous multidisciplinary skills converge. Its constitution was born from a cultural, didactic and scientific oriented and defined project which presupposes an open and inclusive point of view. The scientific culture of design, planning, preservation, recovery and enhancement of the environment, landscape, architectural and historical-archaeological heritage, structural and infrastructural heritage, territory and georesources in the broadest sense are the purposes that the Department proposes. In particular, Matteo Brioni has been collaborating for years as an active member with the course which is part of the UNITWIN / UNESCO Chair Network “Earthen architecture, building cultures and sustainable development” held by teacher Maddalena Achenza.

Matteo Brioni  
recent partnerships

Aēsop®

agape

ALC  
ALMANA GROUP W.L.L.

ALBED  
MILANO 1944

ARMANI / Dada

BALERI ITALIA  


BALLY

baxter  
MADE IN ITALY

BVLGARI

bulthaup

.elmar



FURLA  
SINCE 1927 ITALY

HENRYTIMI

JIL SANDER

LAVAZZA  
TORINO, ITALIA, 1895

LEINA

LINVISIBLE

 Loro Piana

NAR  
SA costruzioni

Mikael Jansson

pacteam  
group

PAOLA C.  
Milano

Poliform

Q8 

SOCIETY  
— LIMONTA —

spotti  
MILANO

TECHNOGYM

Valextra

Wall&decò

MATTEOBRIONI

In Use - Bar & Restaurants 4

Copyright 2021 @ Matteo Brioni srl

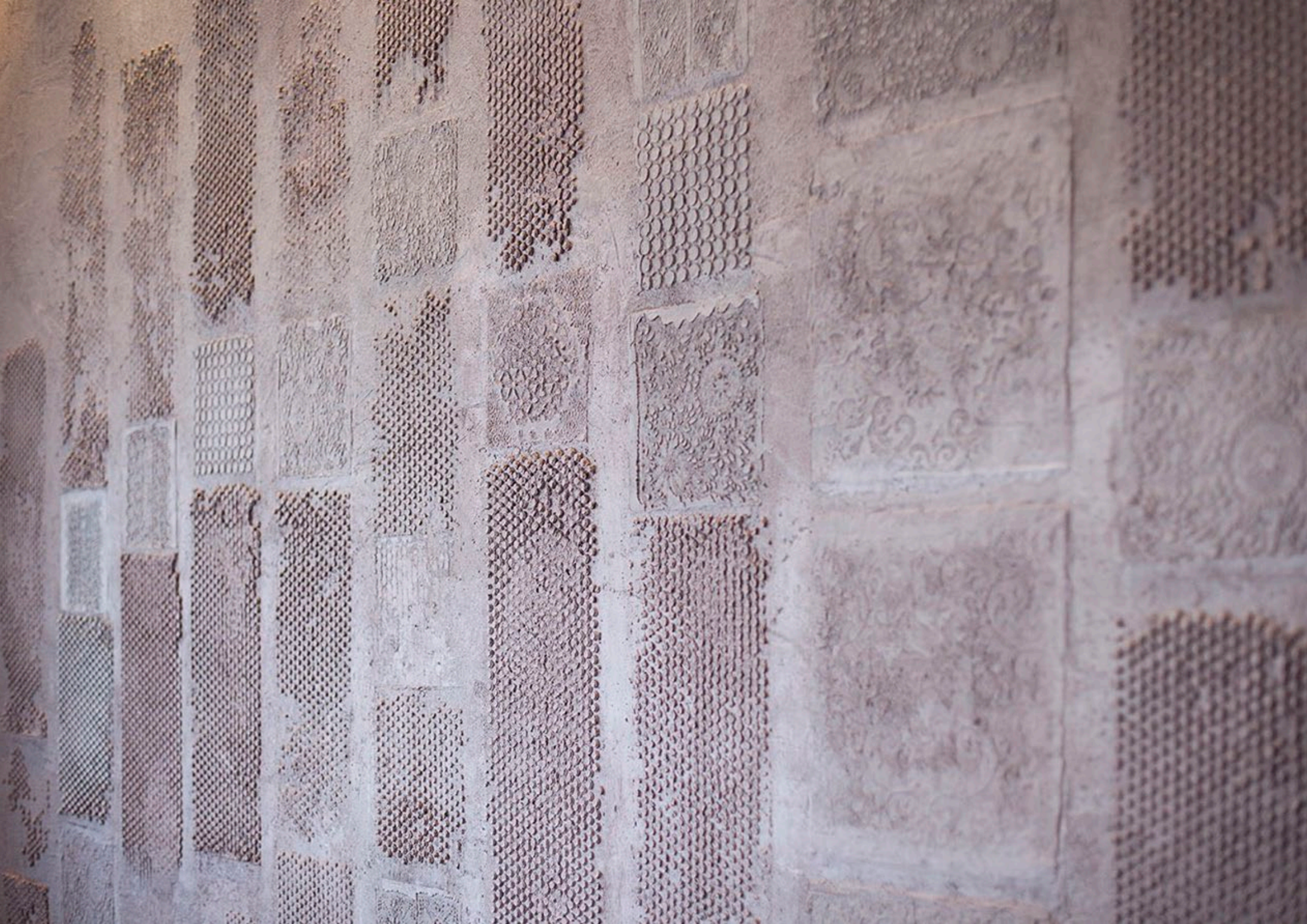


## VINARIA

restaurant in Venice

By Isabella Breda, photos by Bruno Pulici

















## BIRRARIA

pub in Venice

By Isabella Breda, photo by Bruno Pulici



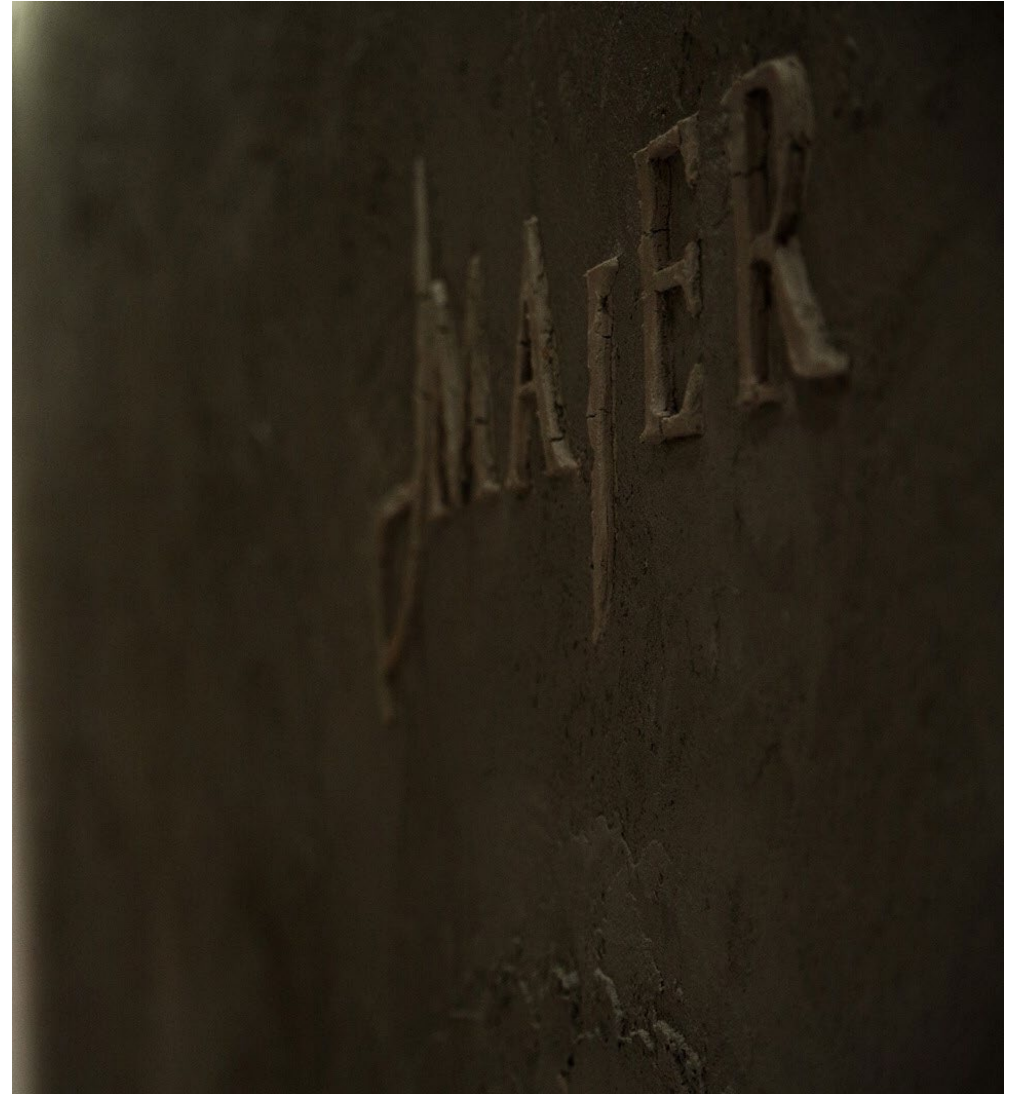




CAFFÈ' MAYER

Venice

Photos & Project by Giuseppe Tortato



MAJER



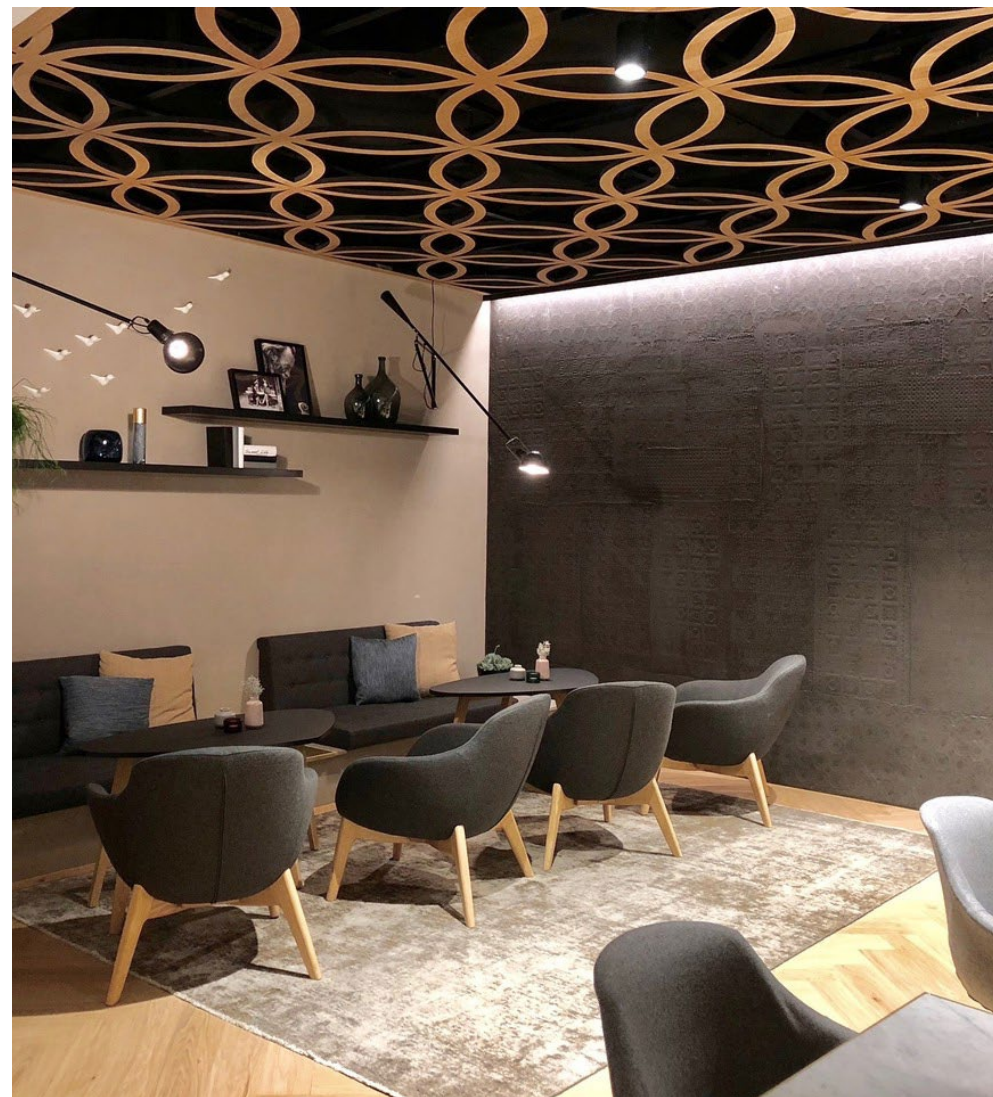




## SWEET LIFE

Coffee bar in Lucern

Photos & Project by Lucian Studer







Sweet Life  
coffee & Sweets



Sweet Life

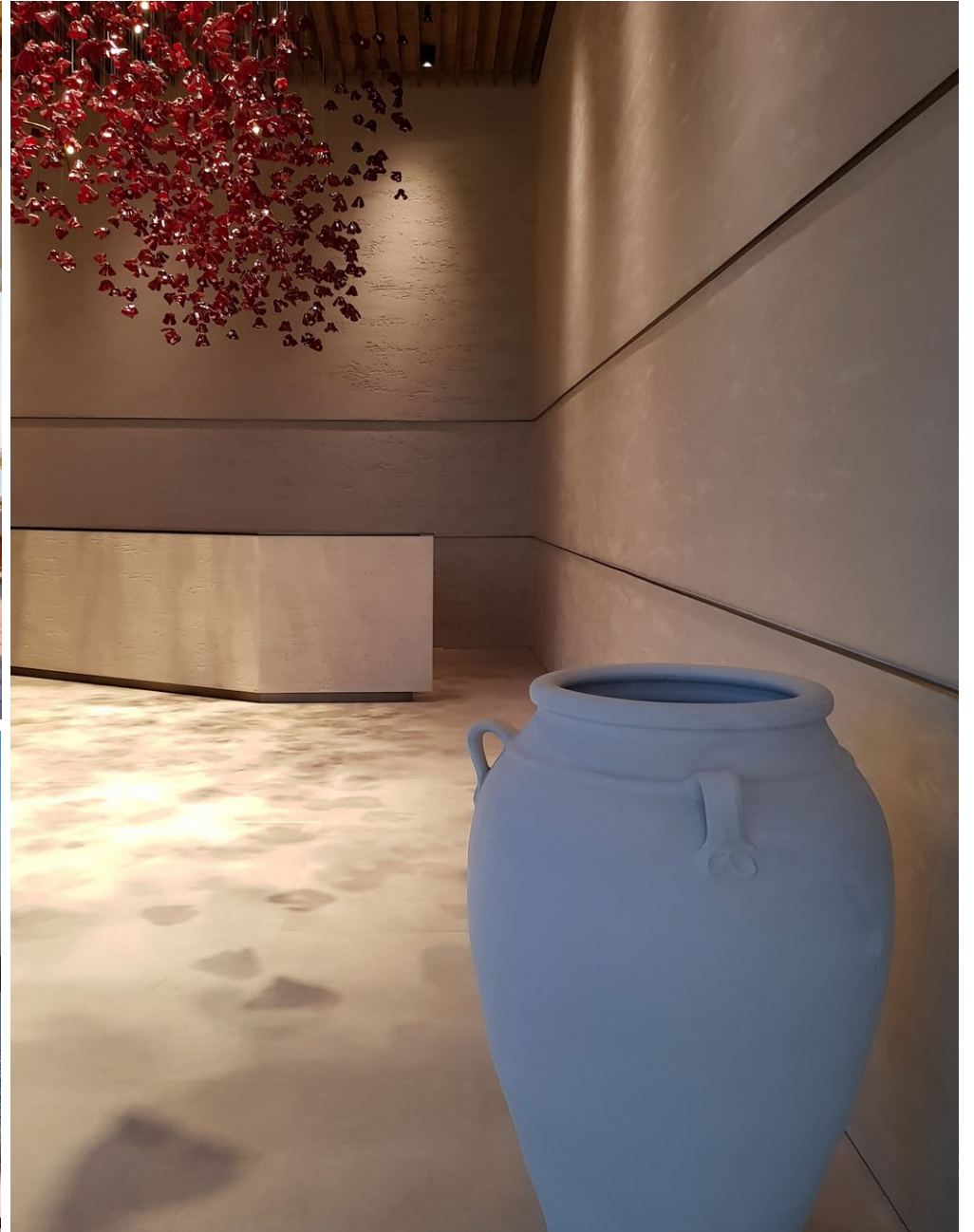
Coffee & Sweets



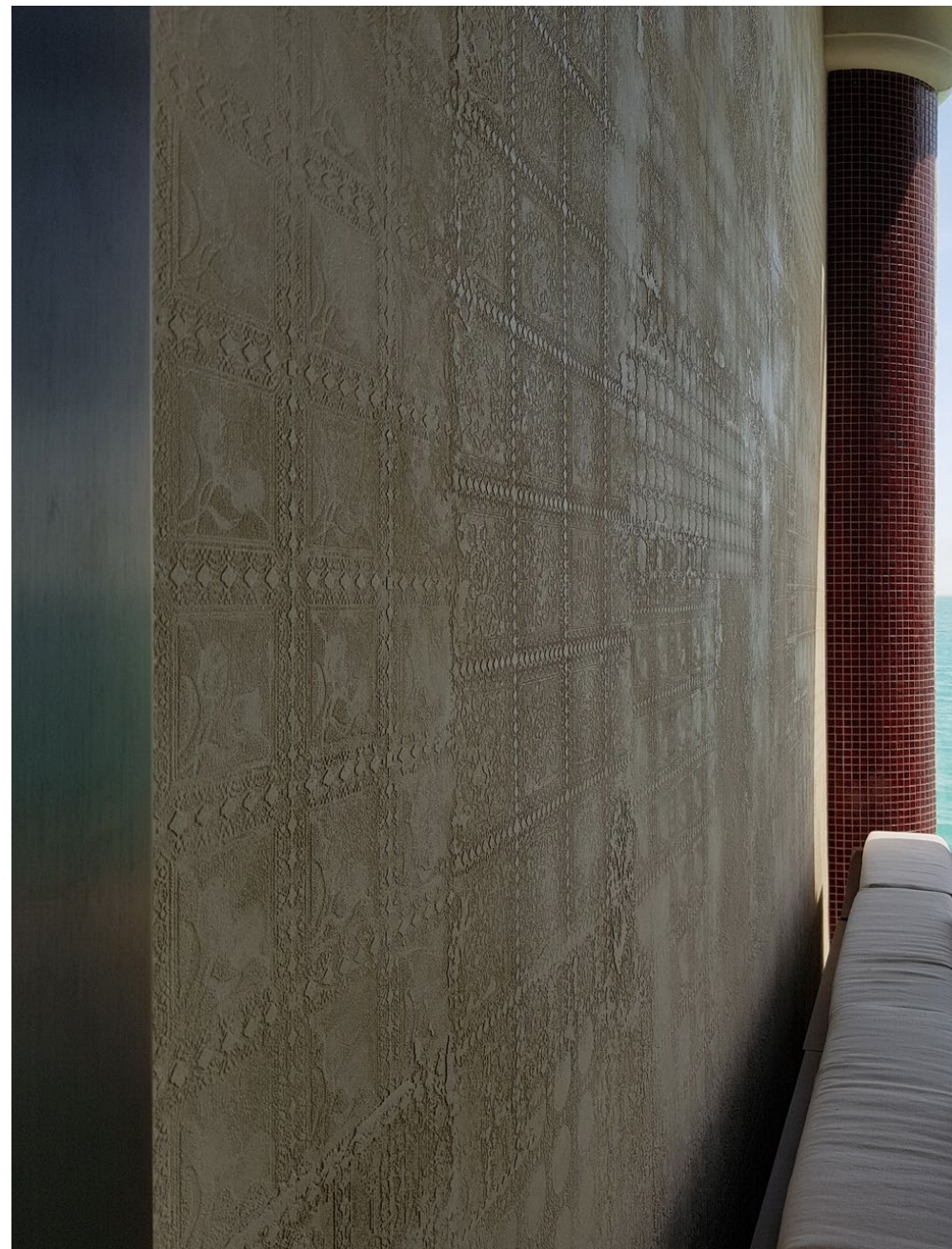
## MARSA KATARA

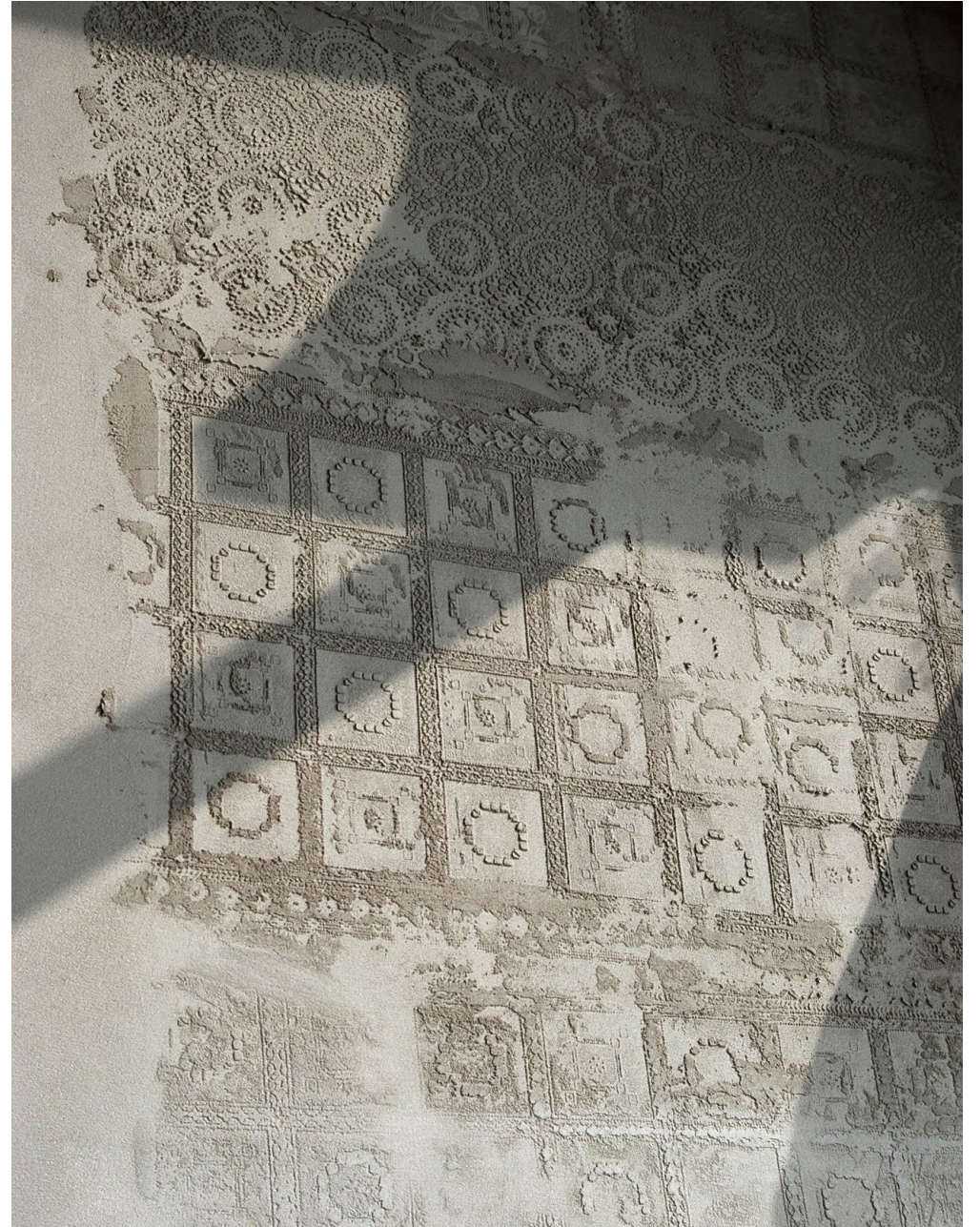
restaurant and bungalow facing the Doha skyline









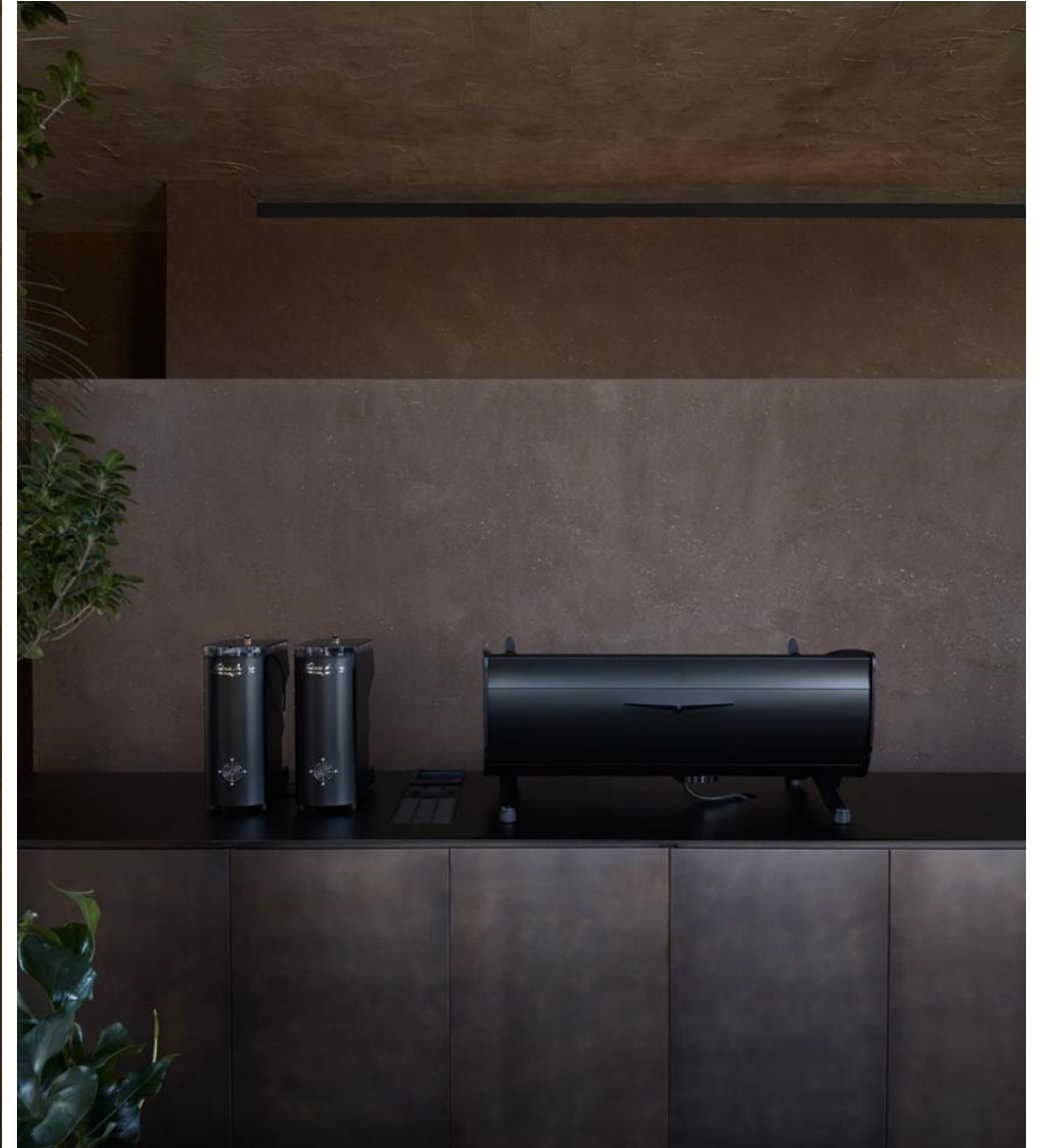






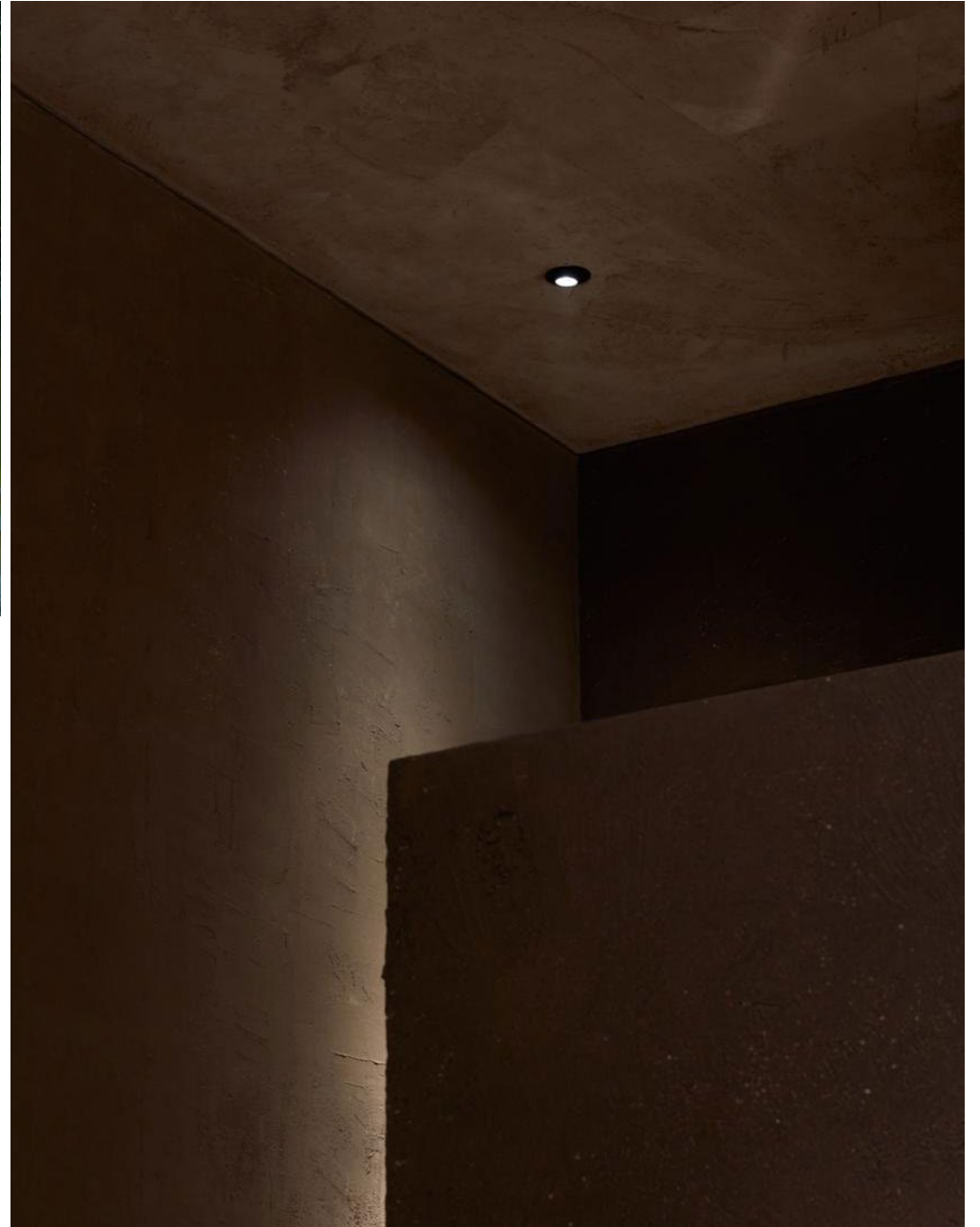


TERRA EATERY  
restaurant in Dubai







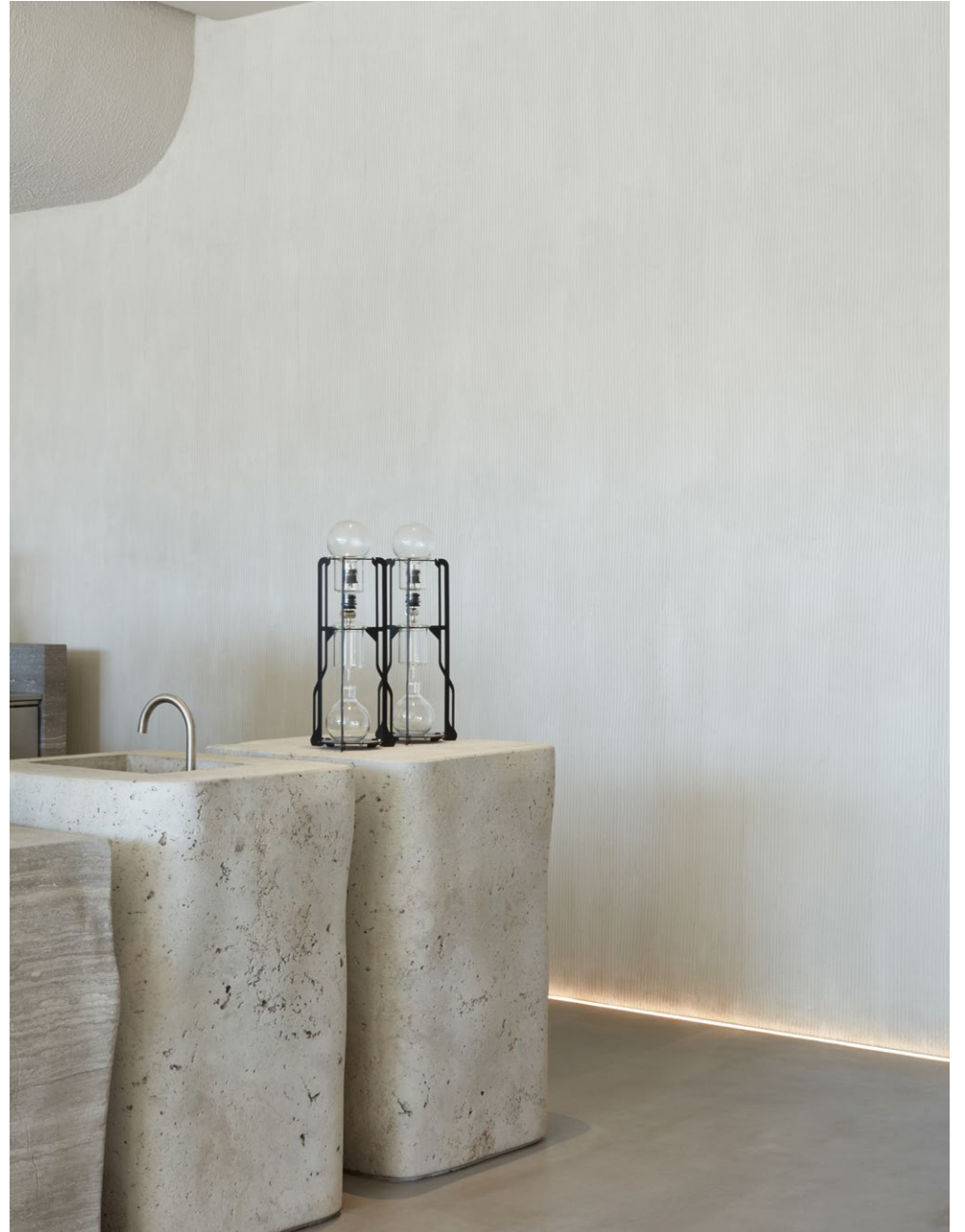


## ORIJIN RESTAURANT

Dubai

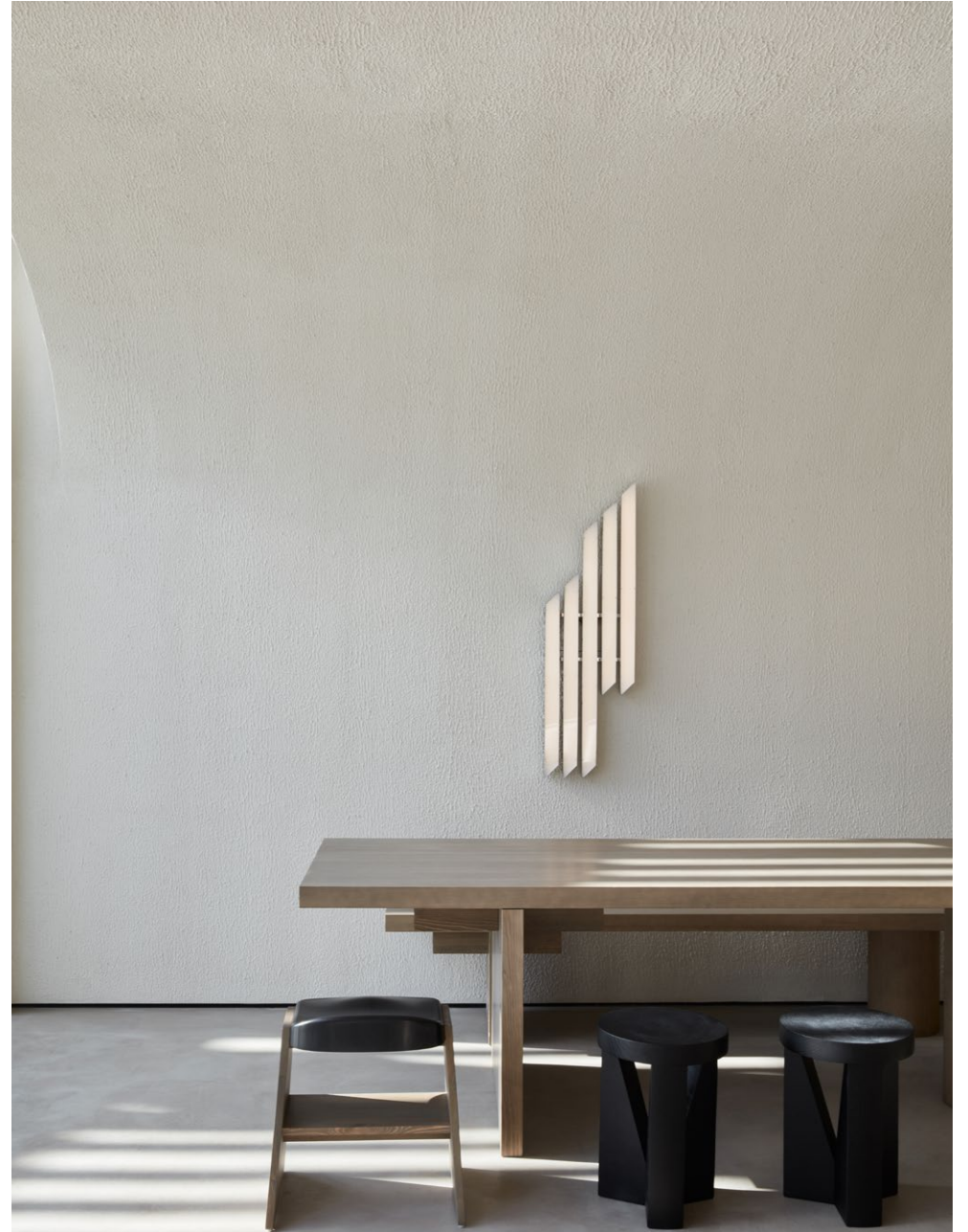
Project by VSHD Design, photos by Oculis Project







**MATTEOBRIONI**



In Use - Bar & Restaurants 31

Copyright 2021 @ Matteo Brioni srl







CAFFE ROSCIOLI

Rome

by MORQ



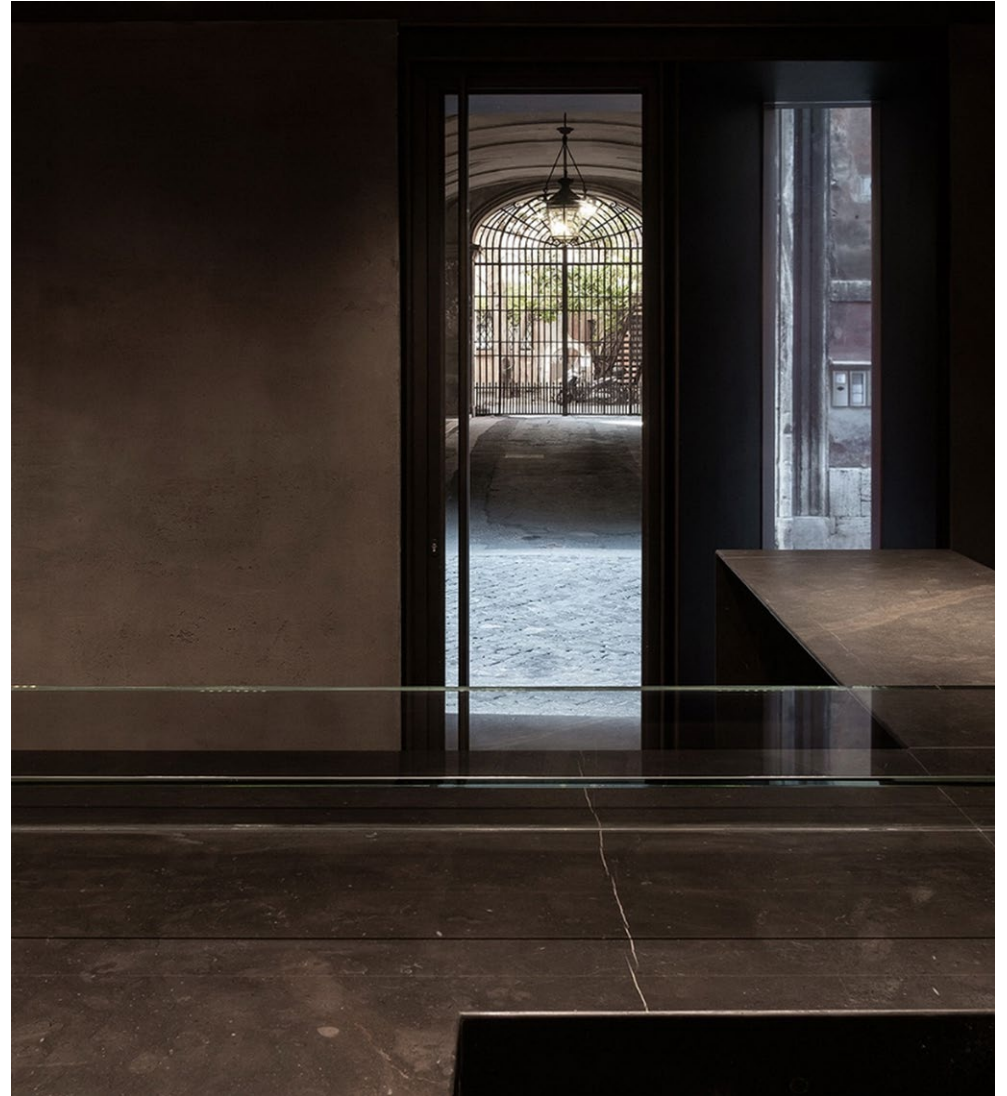








BISTRO DEI BARBIERI  
Rome  
by MORQ









CAFFE DORIA  
Rome











BORGO TURRITO  
Winery in Foggia  
by DDuM Studio









## CAFFETTERIA CA' PESARO

Coffee bar in Venice

by DDUm Studio













MONOGRAPH  
Lounge bar in Tbilisi  
by MOTIF









## MENZIONE D'ONORE

Prodotto  
**LA TERRA SECONDO  
MATTEO**

Designer  
**Studio Irvine**

Azienda  
**Matteo Brioni**

Giuria  
Denis Santachiara, *presidente*  
Luca Bressan, Virginio Briatore  
Jin Kuramoto, Päivi Tahkokallio

**ADI** ADI ASSOCIAZIONE  
PER IL DISEGNO  
INDUSTRIALE

# MATTEOBRIONI

Matteo Brioni srl

•Strada Comunale Ronchi 77 •46023 •Gonzaga •Mantova •Italy

•+39 (0)376 528862

•info@matteobrioni.com

•www.matteobrioni.com