

In Use  
Edition 2021

**MATTEOBRIONI**





Matteo Brioni

Clay For Architecture

Our luxury is to respect the environment

Ecological consciousness and the awareness that what is produced is bound to the beauty of a unique material like raw earth.

An ongoing quest for the perfect balance between beauty, harmony and well-being in using earth in architecture and design with the goal of providing high performance together with low environmental impact, creating three dimensional surfaces and transferring the earth's sensory stirring to spaces created by man.

#### Partners

This company's uniqueness has paved the way towards important partnerships in different sectors, among which can be mentioned those recently developed with Ferrari, Furla, Bulgari, Lavazza, Almana Group, Q8, Armani/Dada, Poliform, Valextra, Bulthaup, Agape, Bally, Baleri Italia, Baxter, Lema, Elmar, Molteni&C, Wall&Decò. Participating in multiple collaborations, for developing new products and solving complex problems or meeting specific needs, has often opened the way towards sources of innovation for the company. Matteo Brioni offers a full range of expertise in raw earth – from feasibility studies to design and installation – and the company considers each collaboration a useful opportunity for exchange and the sharing of expertise and knowledge.



## Institutional and academic collaborations



Matteo Brioni collaborated with prestigious Politecnico di Milano and its Department of Chemistry, Materials and Chemical Engineering “Giulio Natta” that was founded in 2001, with solid foundations and with skills to face all the engineering challenges that involve the correlations between the molecular aspects of the material and the application characteristics of the products.

The Department is divided into different Sections whose scientific and technological development activities cover the macro areas: Energy, Safety and Environment; Health and Life Sciences; Smart and Sustainable Industry.

Among these, the Materials Science and Engineering section stands out, with which a collaboration is being carried out for the LCA Studio of Brioni products in order to obtain EPD marking. The members of the section cultivate skills in the study of structure - property relationships, design and preparation, production and transformation processes, characterization, degradation, durability and conservation, restoration and recycling of materials and products, having an engineering and industrial interest. Furthermore, the section’s heritage is the complex of knowledge relating to materials for sustainable development, for the environment and energy, for construction, durability, and cultural heritage, for advanced manufacturing and design, and for life sciences and technology.

The Department has more than 120 teaching staff members, 50 technical-administrative staff, over 150 PhD students and almost 50 research fellows.

Matteo Brioni also Collaborated with the University of Cagliari, the University of Basilicata and UNESCO. The DICAAR is the polytechnic expression of the University of Cagliari in which numerous multidisciplinary skills converge. Its constitution was born from a cultural, didactic and scientific oriented and defined project which presupposes an open and inclusive point of view. The scientific culture of design, planning, preservation, recovery and enhancement of the environment, landscape, architectural and historical-archaeological heritage, structural and infrastructural heritage, territory and georesources in the broadest sense are the purposes that the Department proposes. In particular, Matteo Brioni has been collaborating for years as an active member with the course which is part of the UNITWIN / UNESCO Chair Network “Earthen architecture, building cultures and sustainable development” held by teacher Maddalena Achenza.



Matteo Brioni  
recent partnerships

Aēsop®

agape

ALC  
ALMANA GROUP W.L.L.

ALBED  
MILANO 1944

ARMANI / Dada

BALERI ITALIA  


BALLY

baxter  
MADE IN ITALY

BVLGARI

bulthaup

.elmar



FURLA  
SINCE 1927 ITALY

HENRYTIMI

JIL SANDER

LAVAZZA  
TORINO, ITALIA, 1895

LEINA

LINVISIBLE

 Loro Piana

NAR  
SA costruzioni

Mikael Jansson

pacteam  
group

PAOLA C.  
Milano

Poliform

Q8 

SOCIETY  
— LIMONTA —

spotti  
MILANO

TECHNOGYM

Valextra

Wall&decò

MATTEOBRIONI

In Use 4



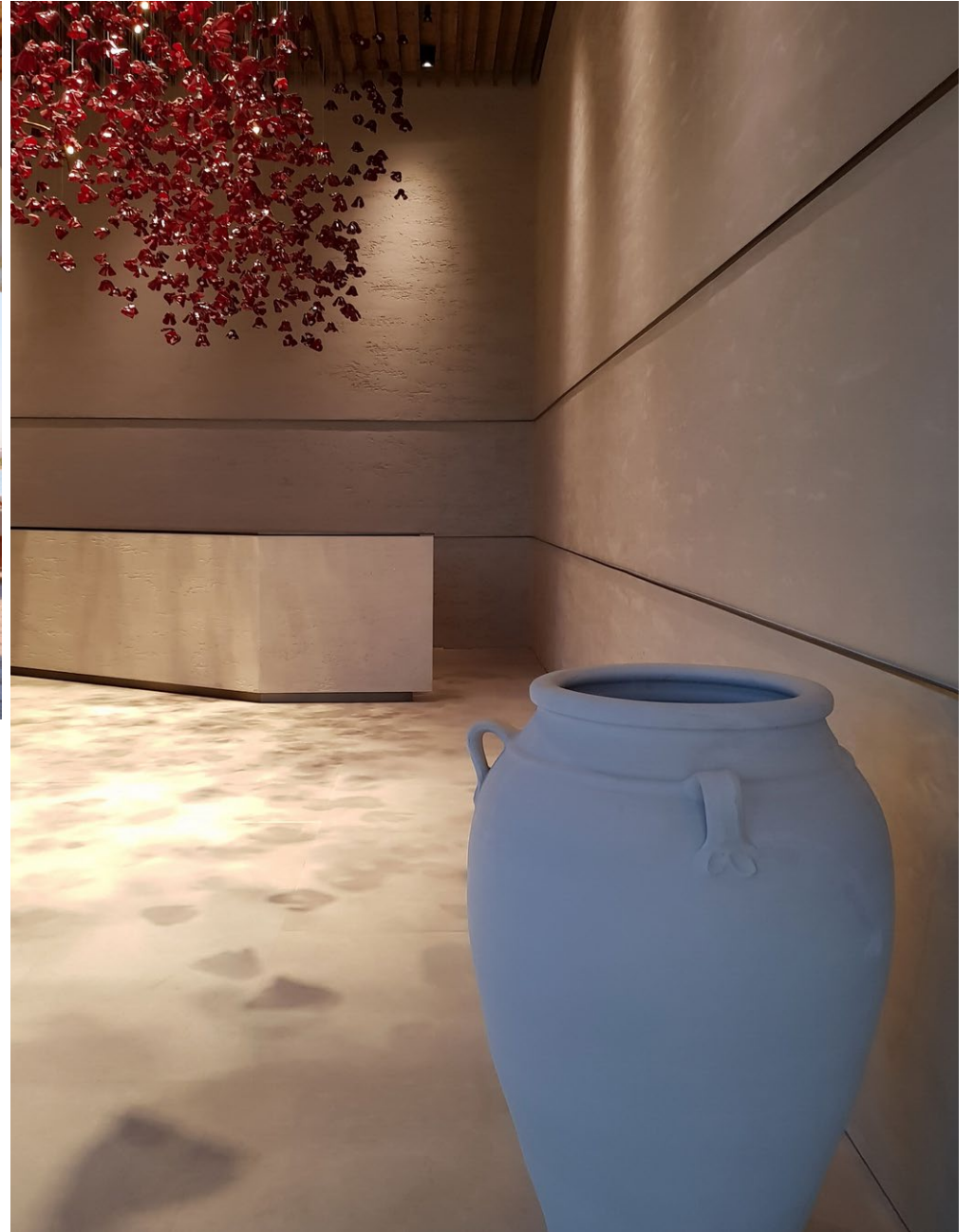


## MARSA KATARA

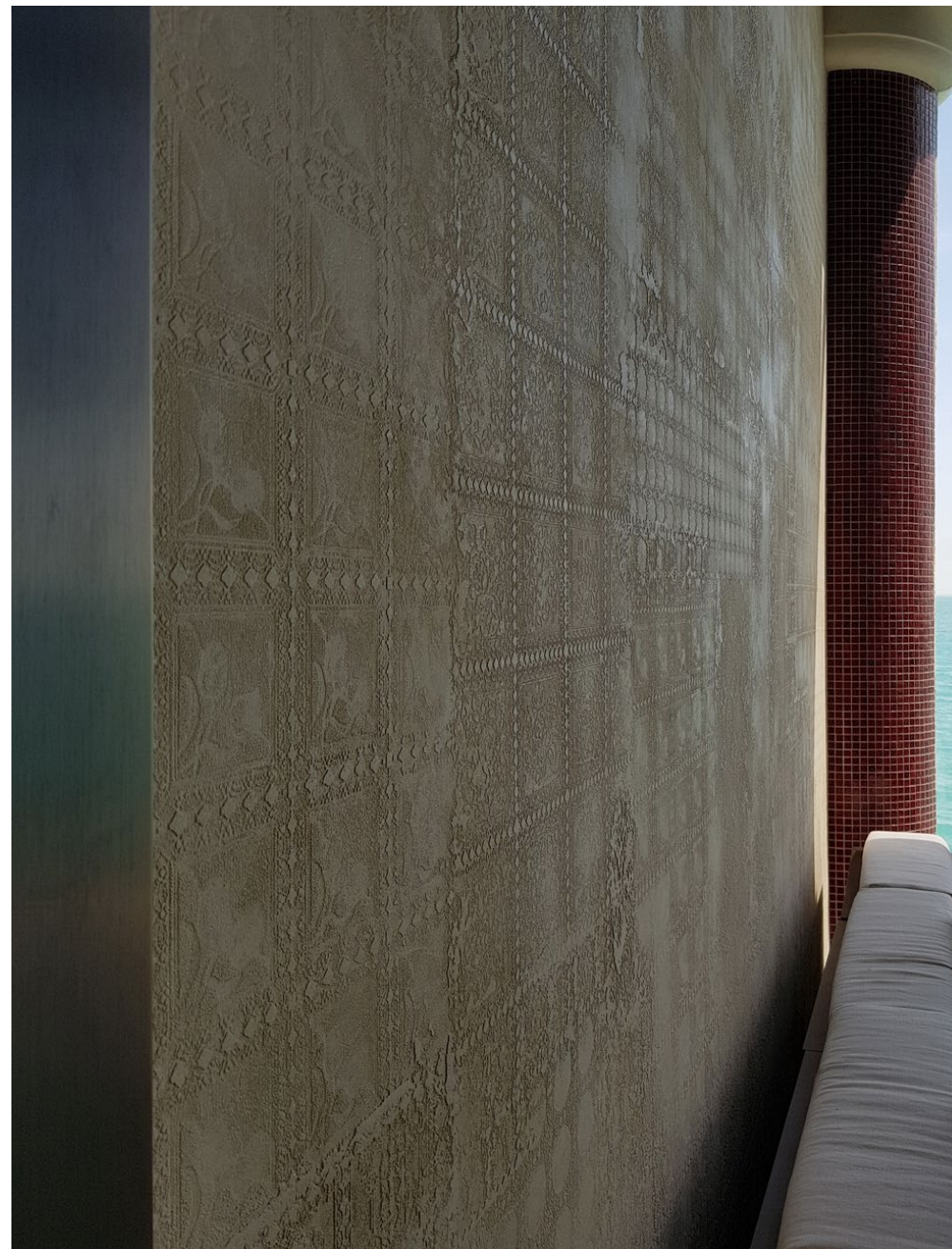
restaurant and bungalow facing the Doha skyline, realized by Al Mana Group



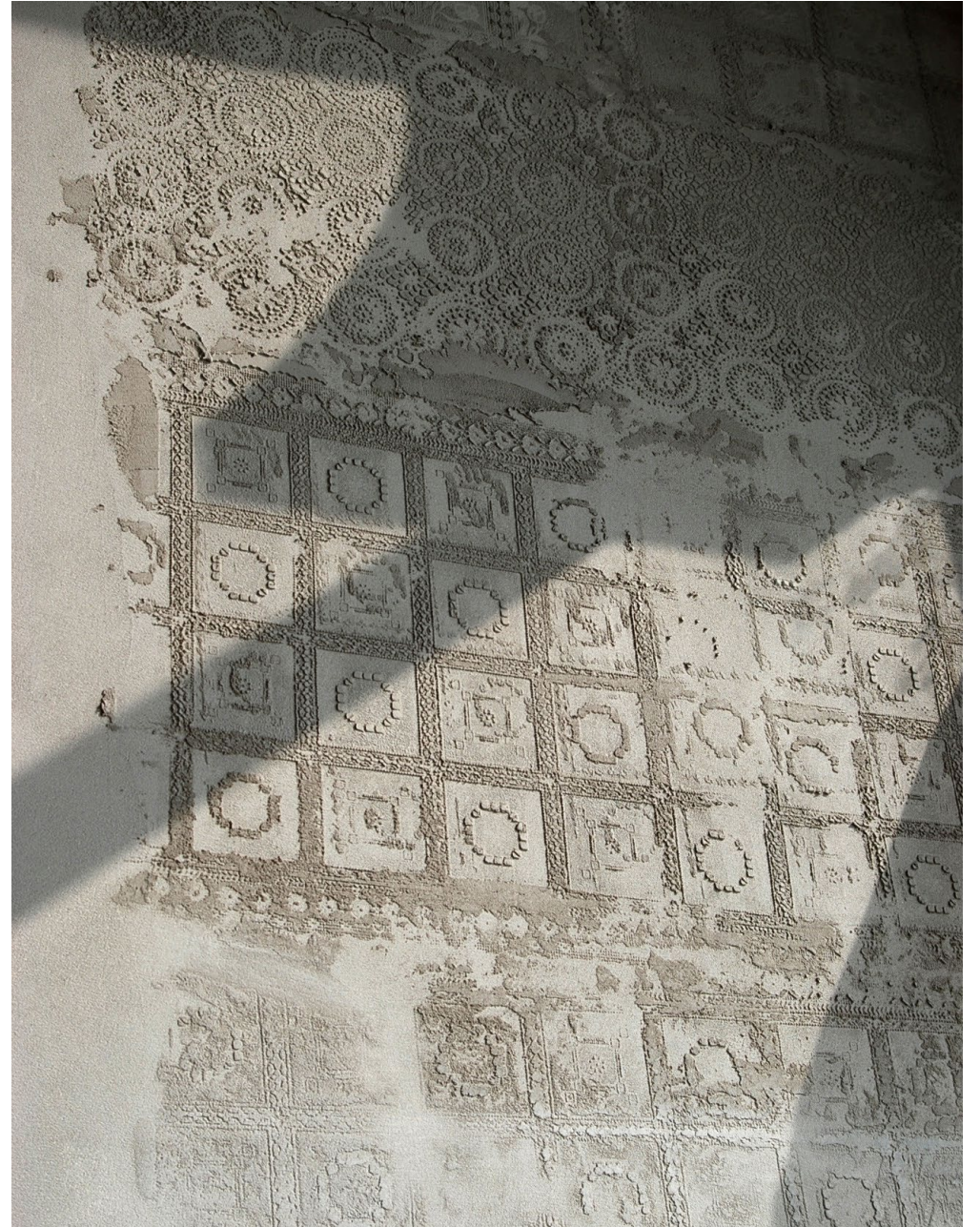








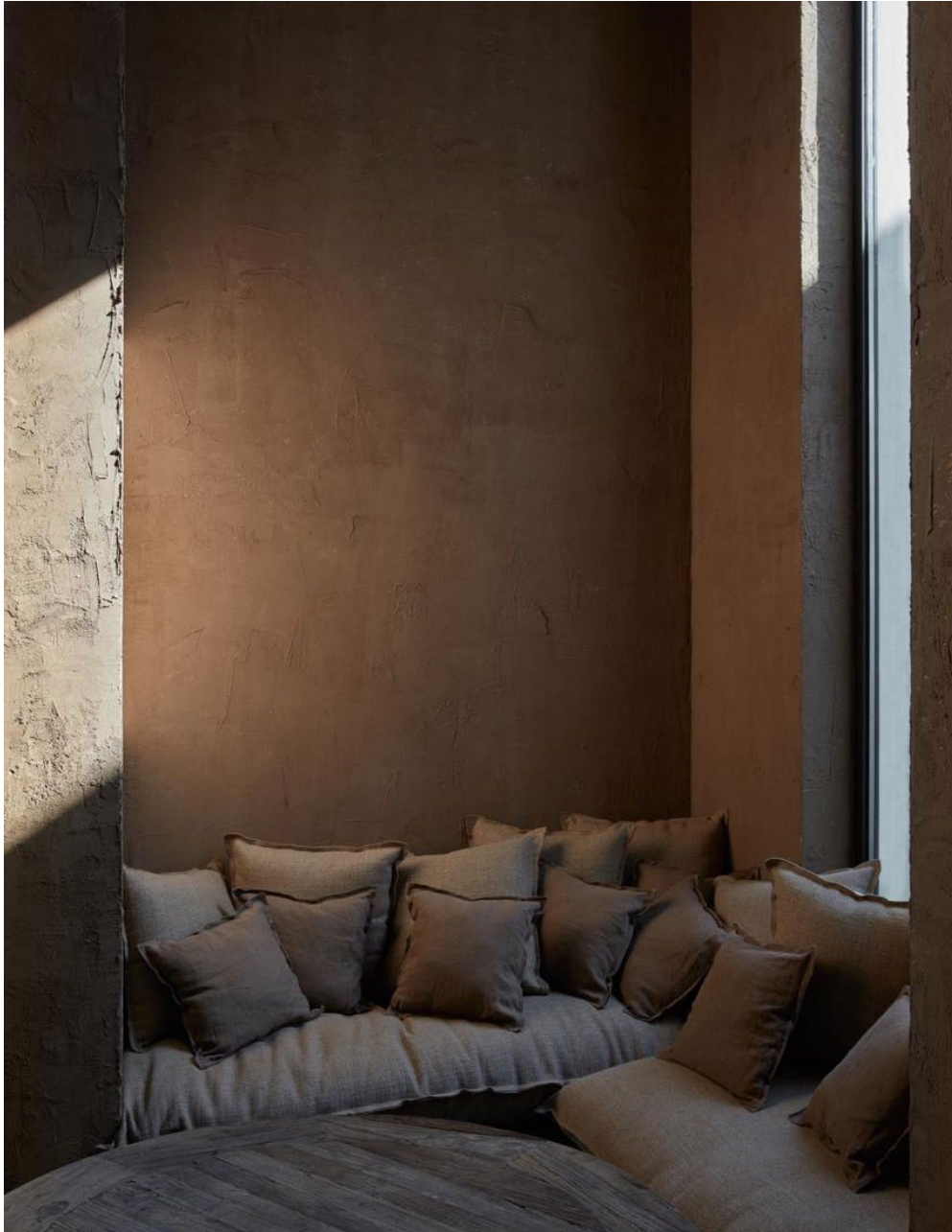








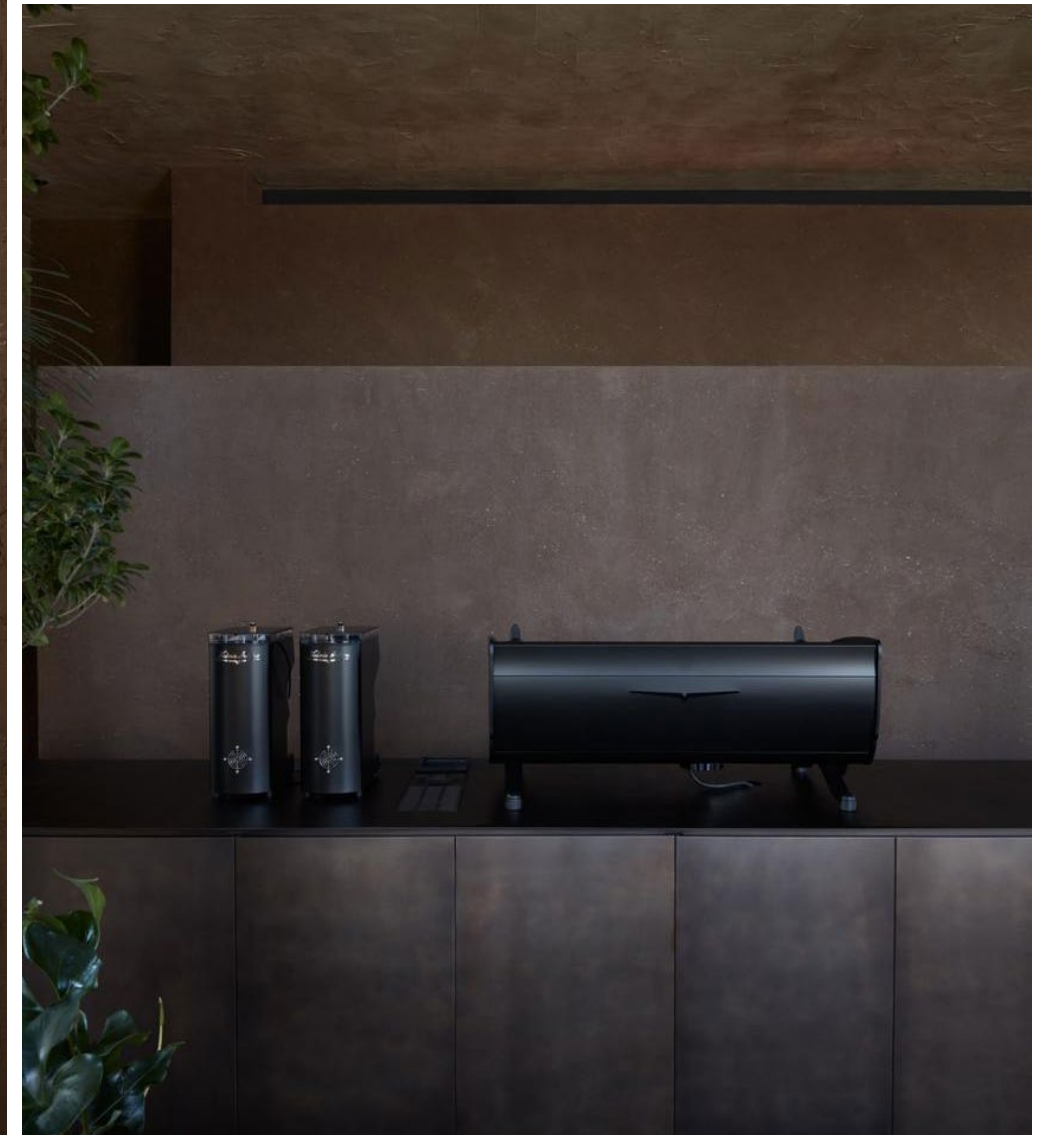




## TERRA EATERY

restaurant in Dubai by Bone Studio

photos by Oculisproject



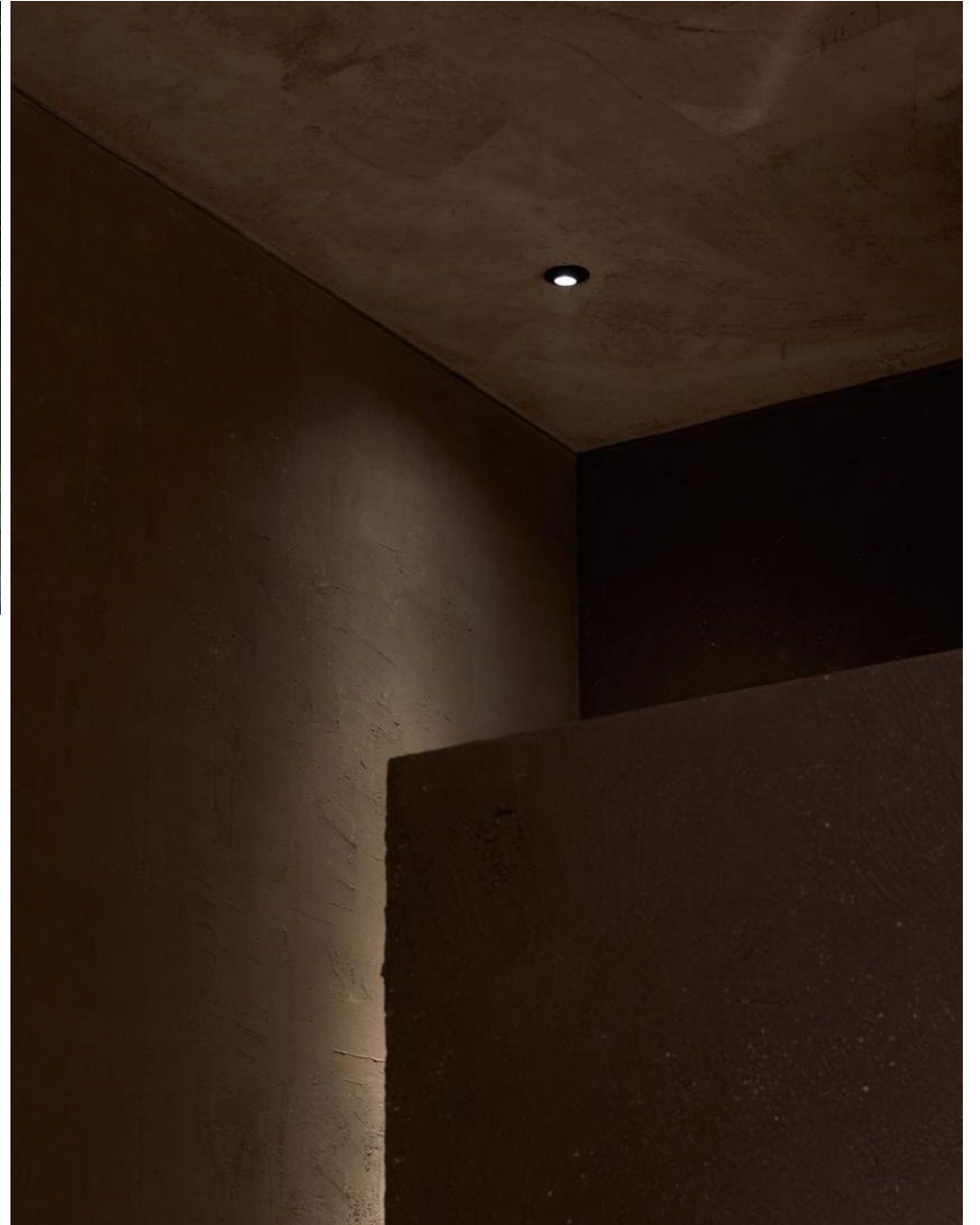
















VILLA ON THE MEDITERRANEAN SEA  
Project by MORQ Architecture, photos by Giulio Aristide











POLIFORM ADV  
photos by Omar Sartor







## FURLA MONTENAPOLEONE MILAN

Project by David Chipperfield Architects, photos by Alberto Parise



















ARMANI / DADA FURNITURES

Matteo Brioni TerraVista Plus, photos by Andrea Martiradonna







## VALEXTRA MILANO

Project by John Pawson, photos by Andrea Martiradonna















## VALEXTRA HONOLULU

Project by COLLECTIVE & Workshop-hi, photos by Katja Lam











## FERRARI SHOP MARANELLO

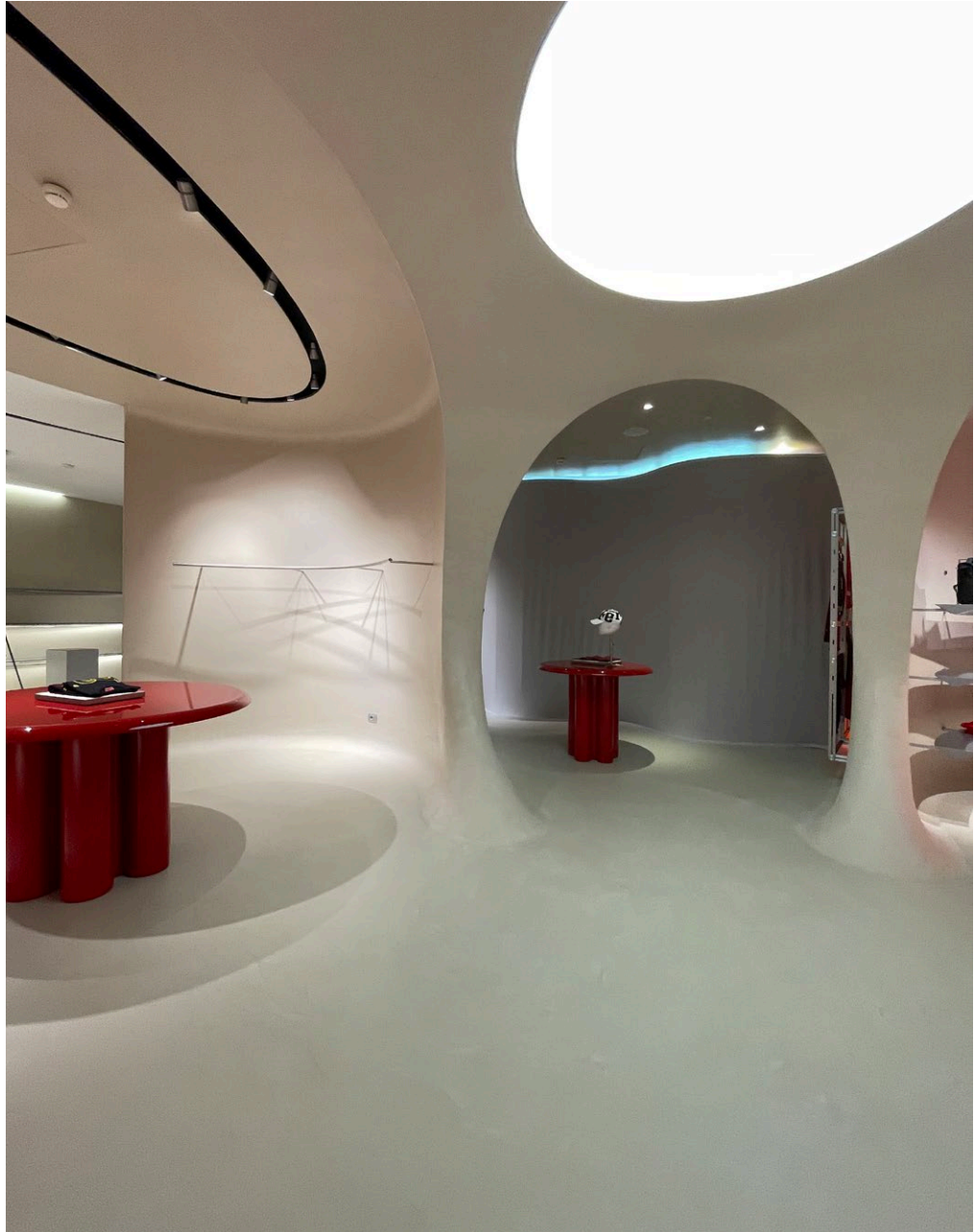
Project by Sybarite







**MATTEOBRIONI**



In Use 28

Copyright 2021 @ Matteo Brioni srl





PRIVATE RESIDENCE IN PIENZA

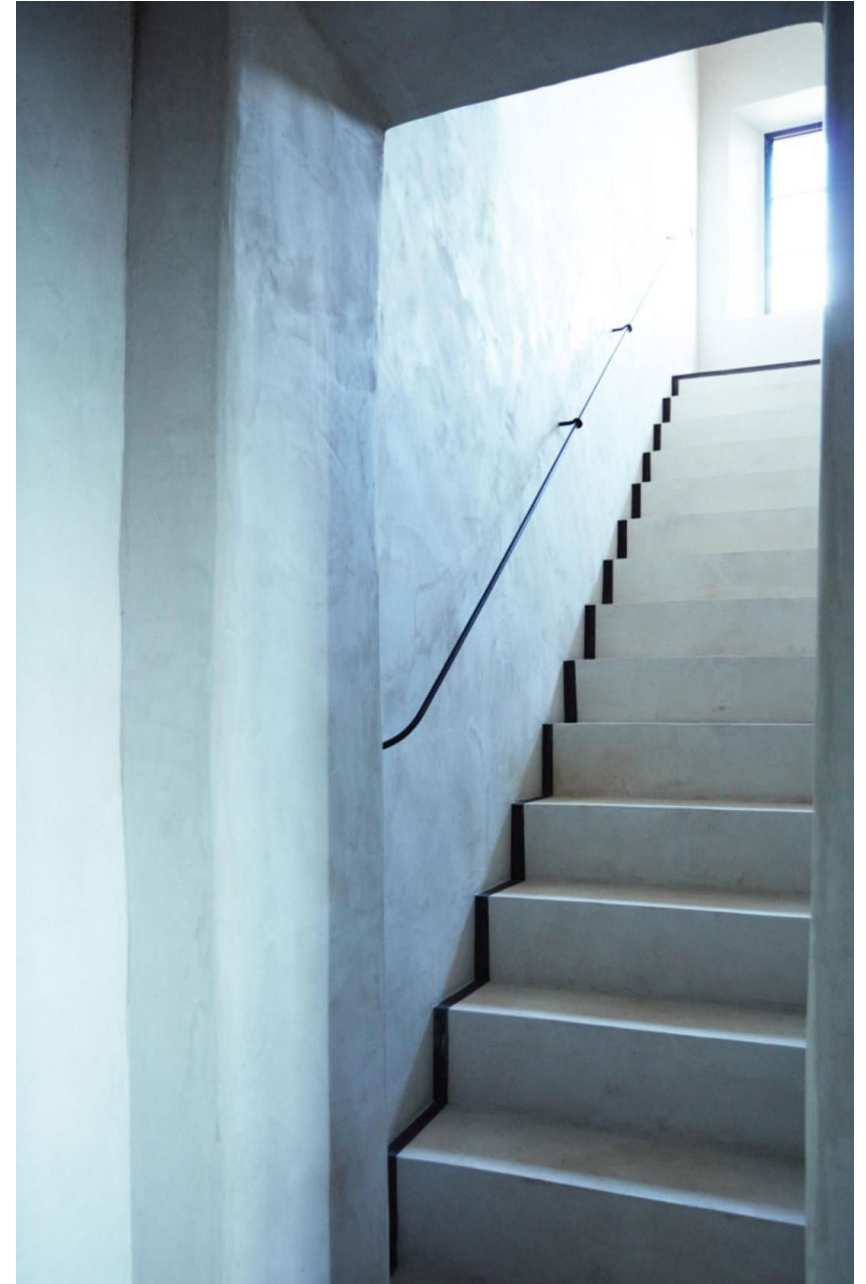
Photos by Mikael Jansson













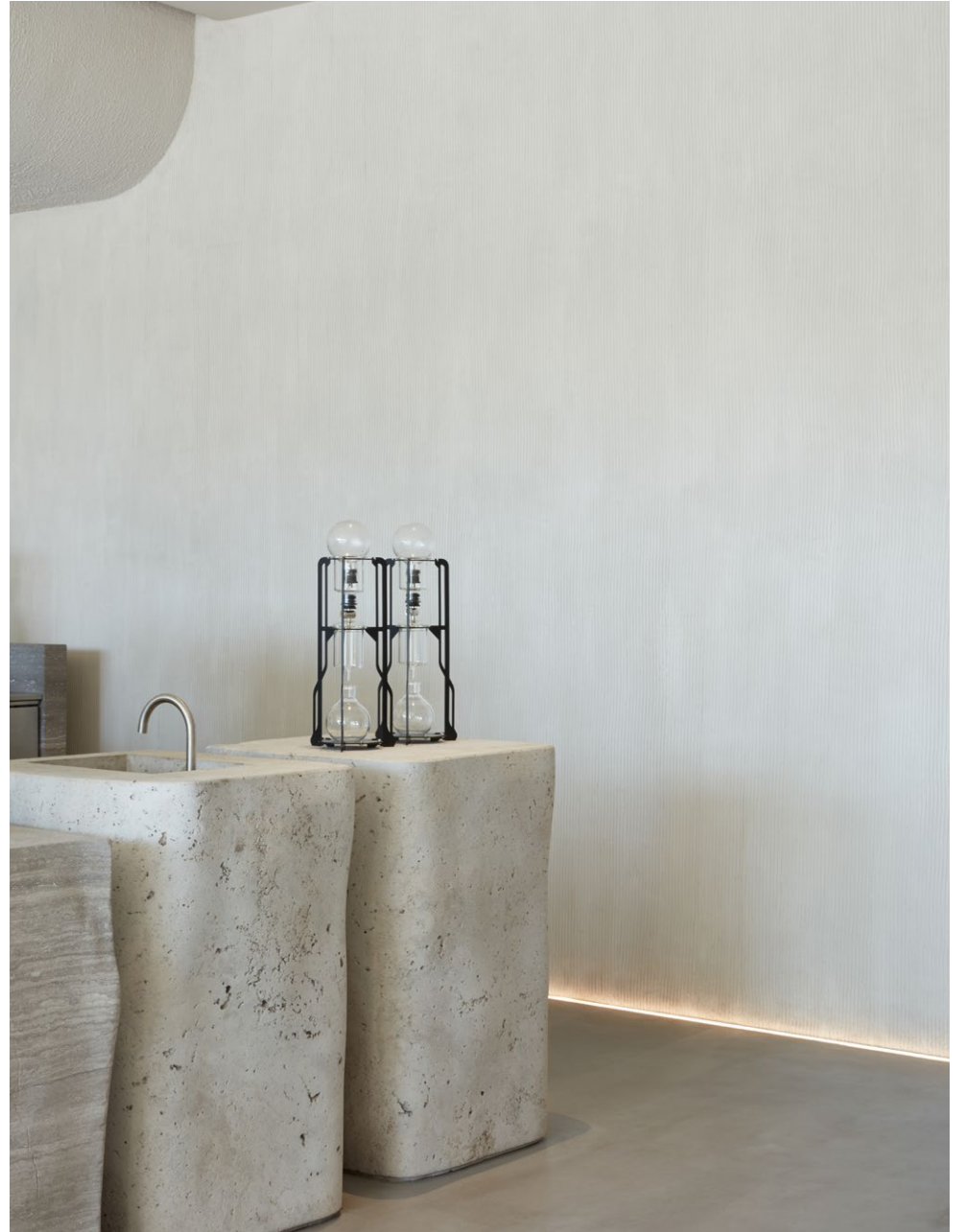
## ORIJIN RESTAURANT

Dubai

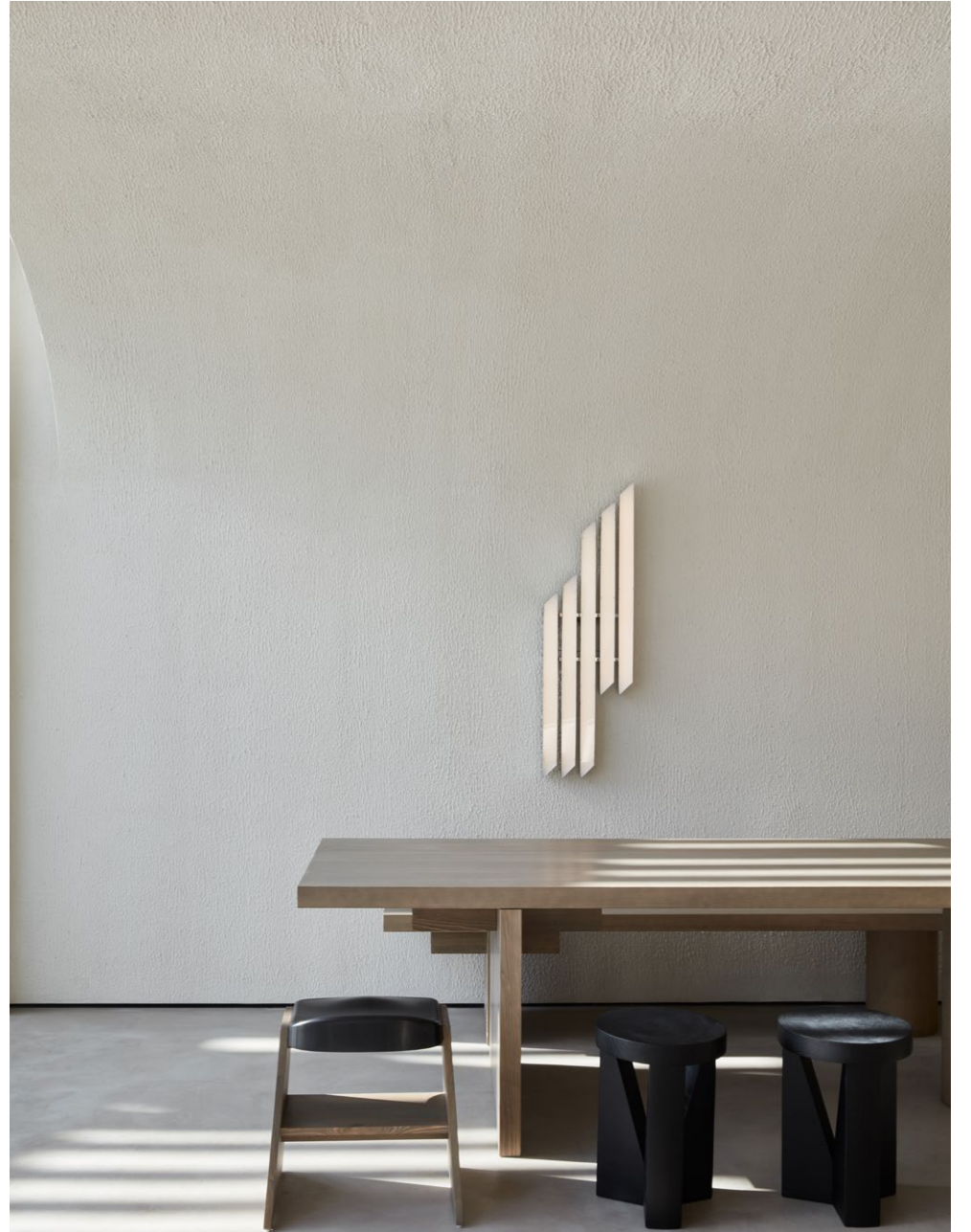
Project by VSHD Design, photos by Oculis Project



















## IMARIKA

Shop in Milan

Project by Marcante Testa, photos by Carola Ripamonti









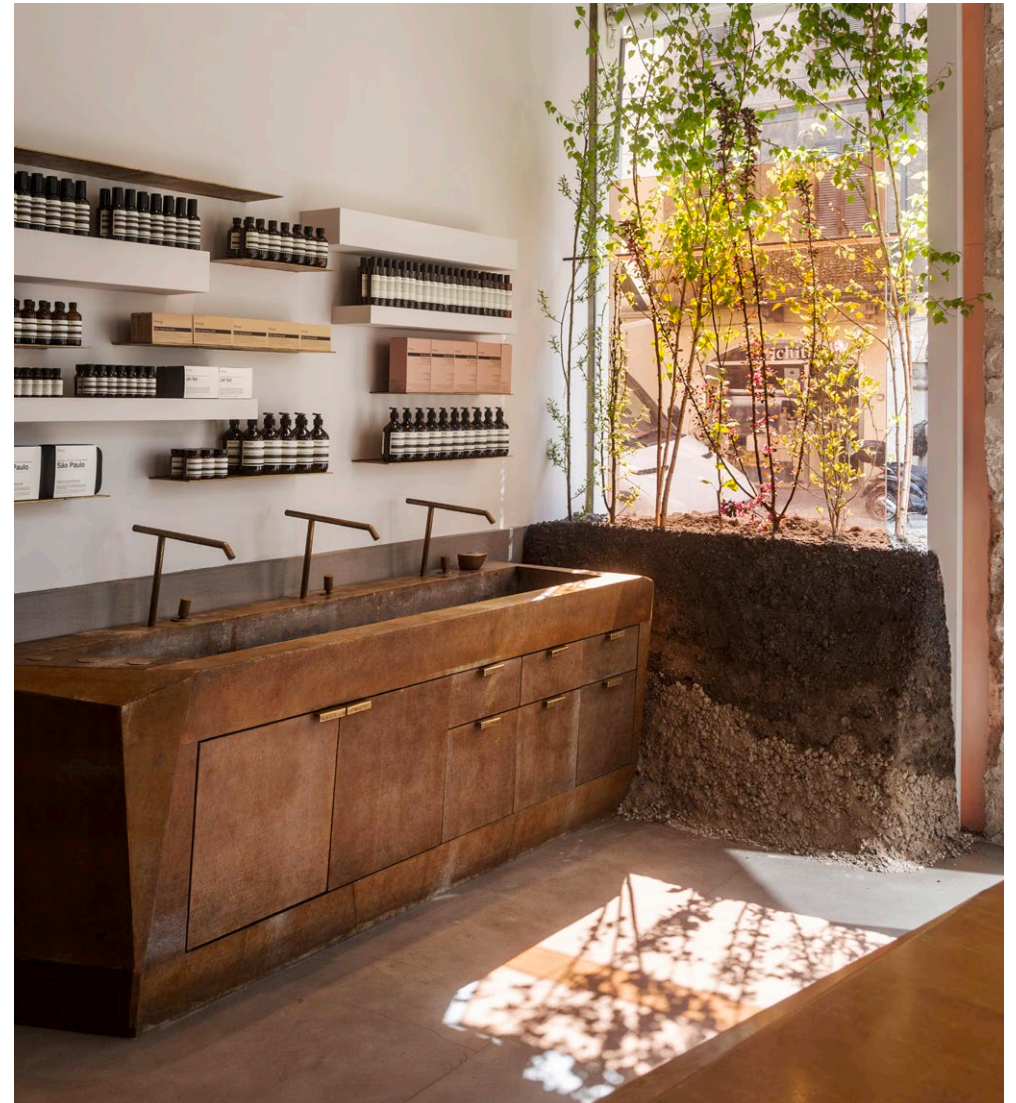


Scopri questo negozio su [taxonomyofdesign.com](https://taxonomyofdesign.com)

## AESOP BRERA

shop in Milan by Vincenzo De Cotis Architects

installation by Inside Outside, photos by Trevor Mein et al

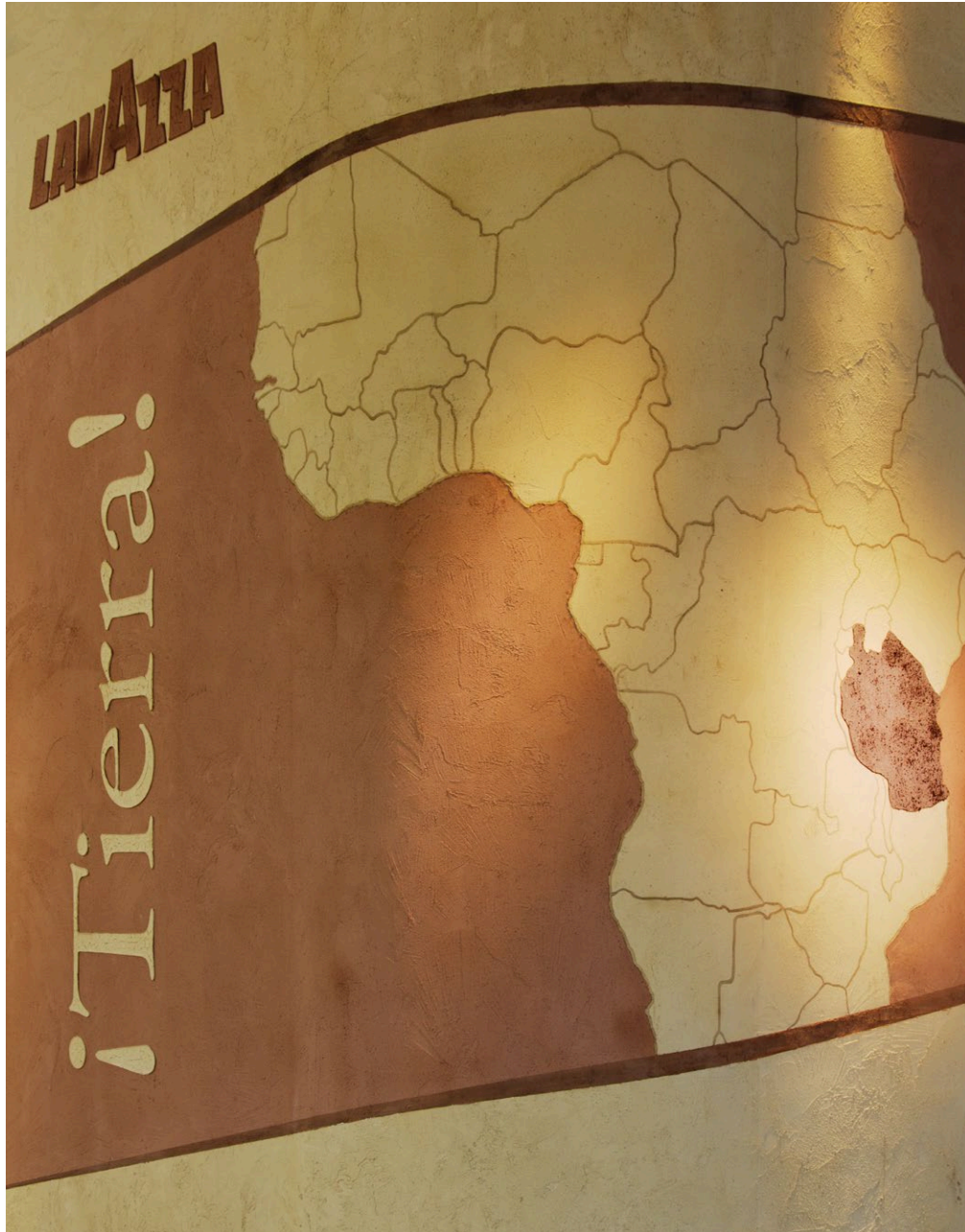




"In the woods,  
is perpetual youth."  
Ralph Waldo Emerson



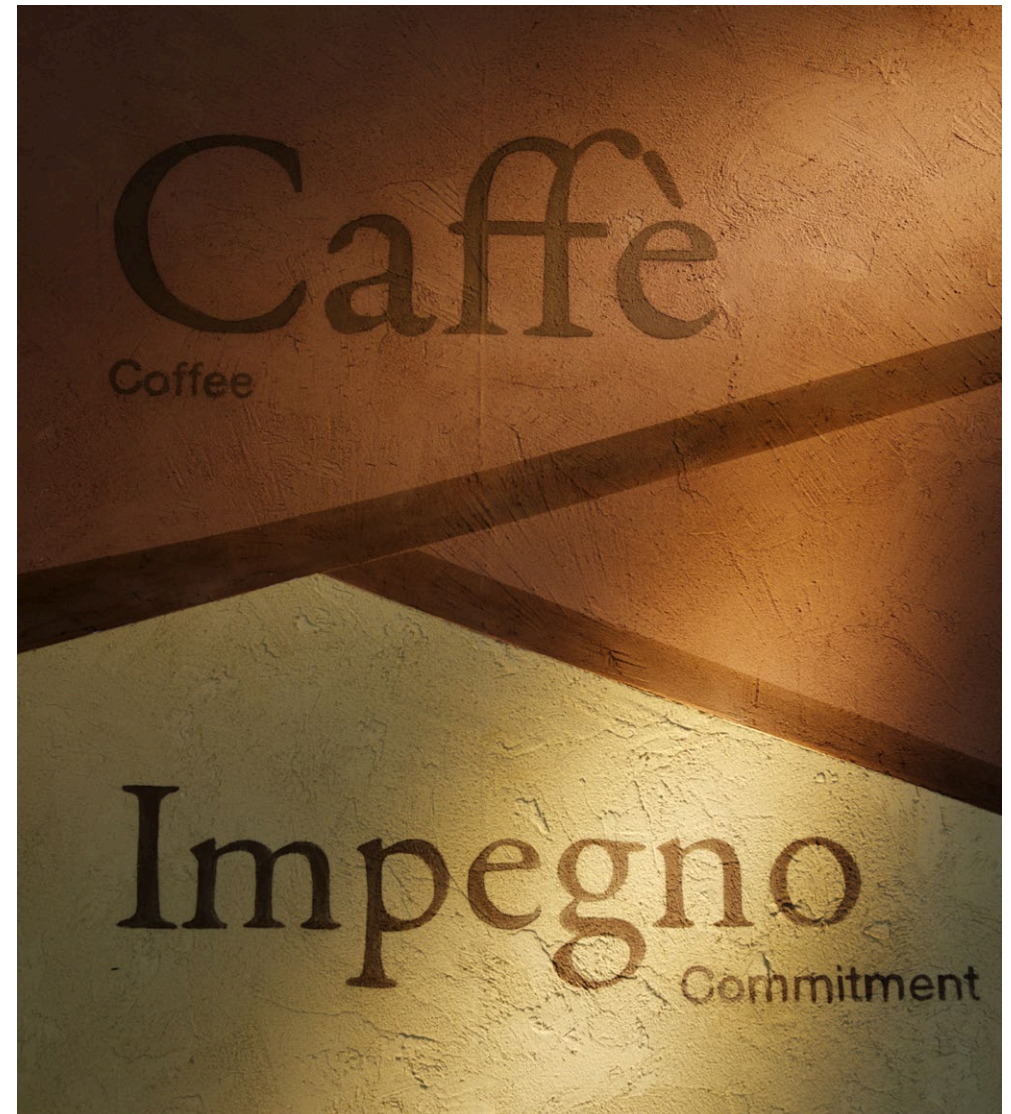




LAVAZZA

Salone del Gusto

Photos by Matteo Nobili





CASSA



CASSA

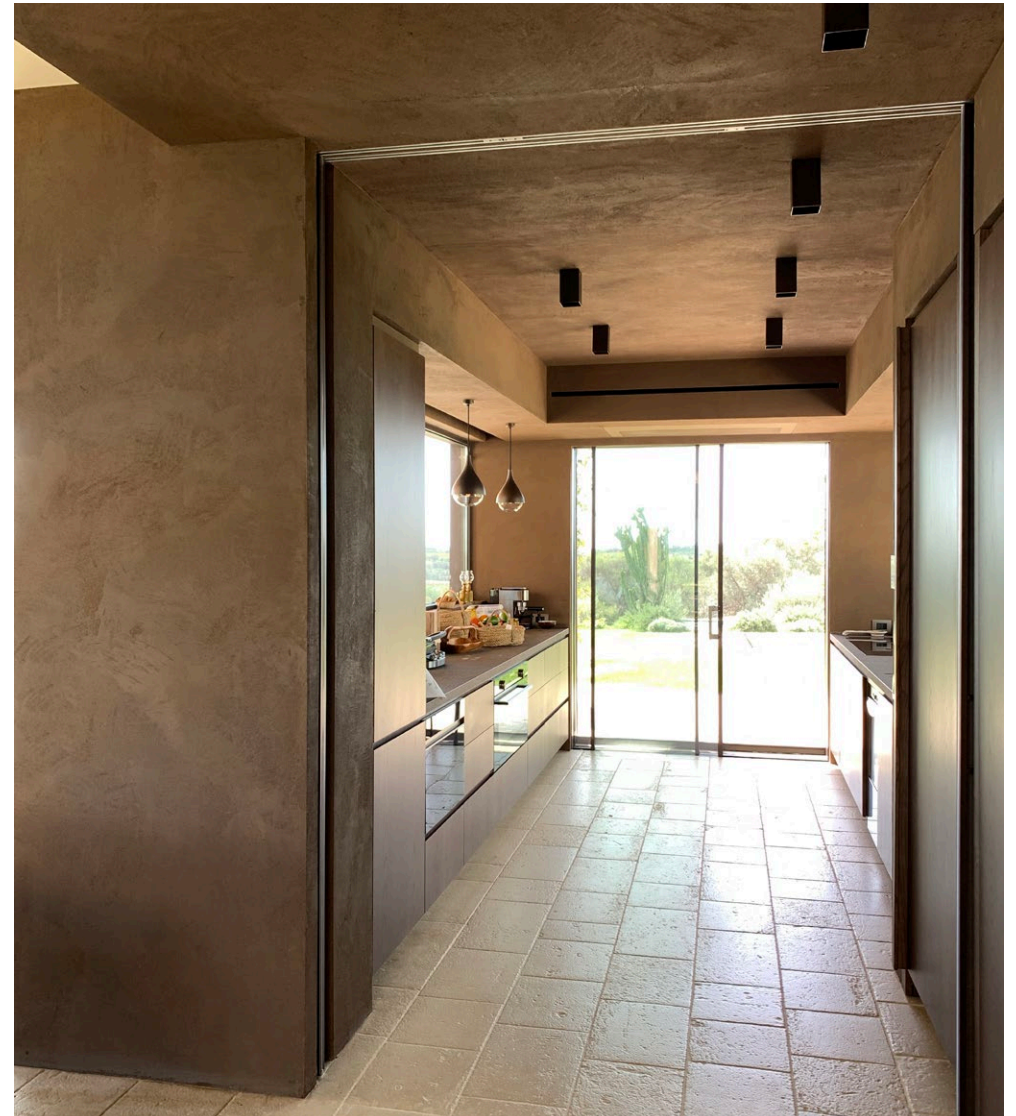








VILLA IN NOTO  
Sicily  
Project by Westway Architects



























## AGAPE HEADQUARTERS

Exteriors

Photos by Maurizio Zatacchetto







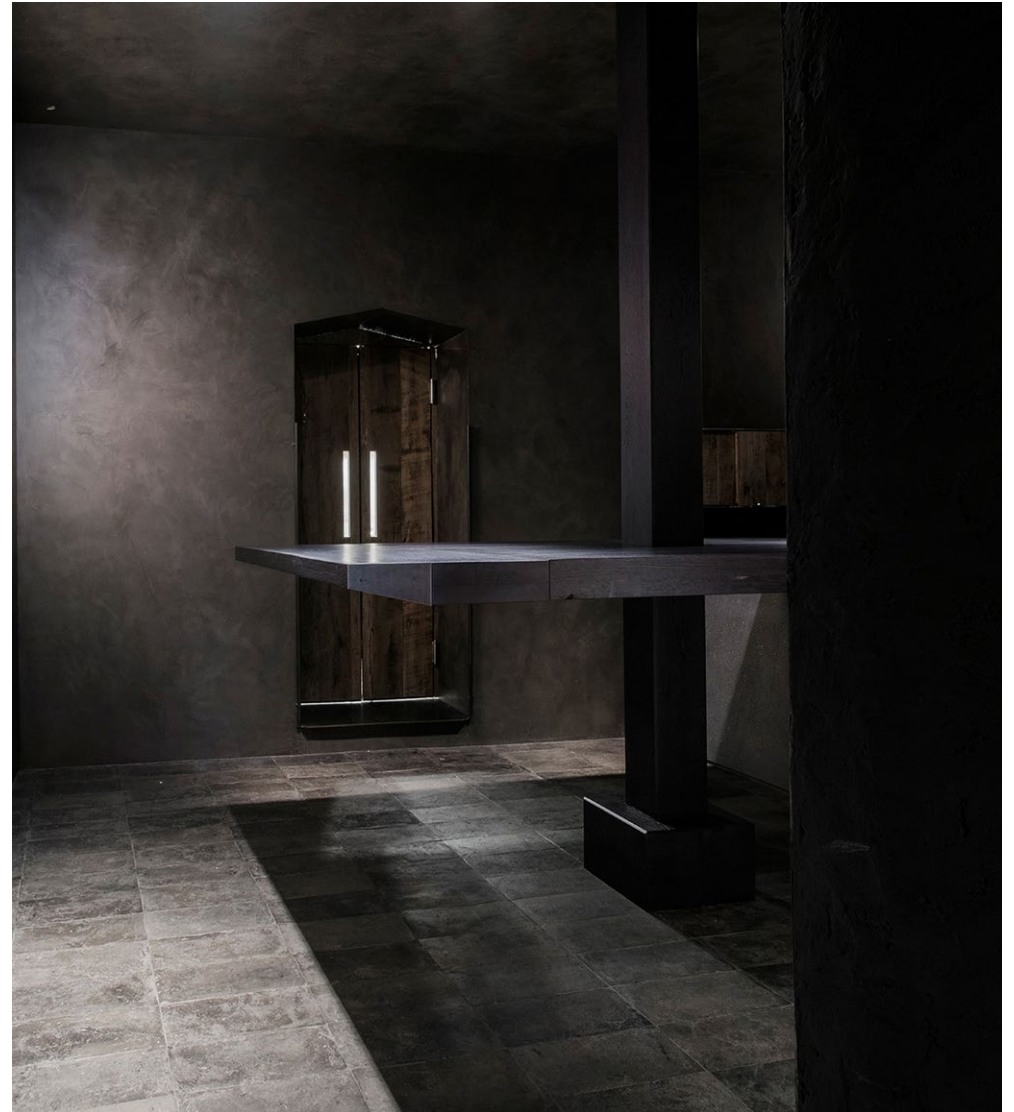




## CAFFE ROSCIOLI

Rome

Project by MORQ, photos by Giulio Aristide



















## BALLY

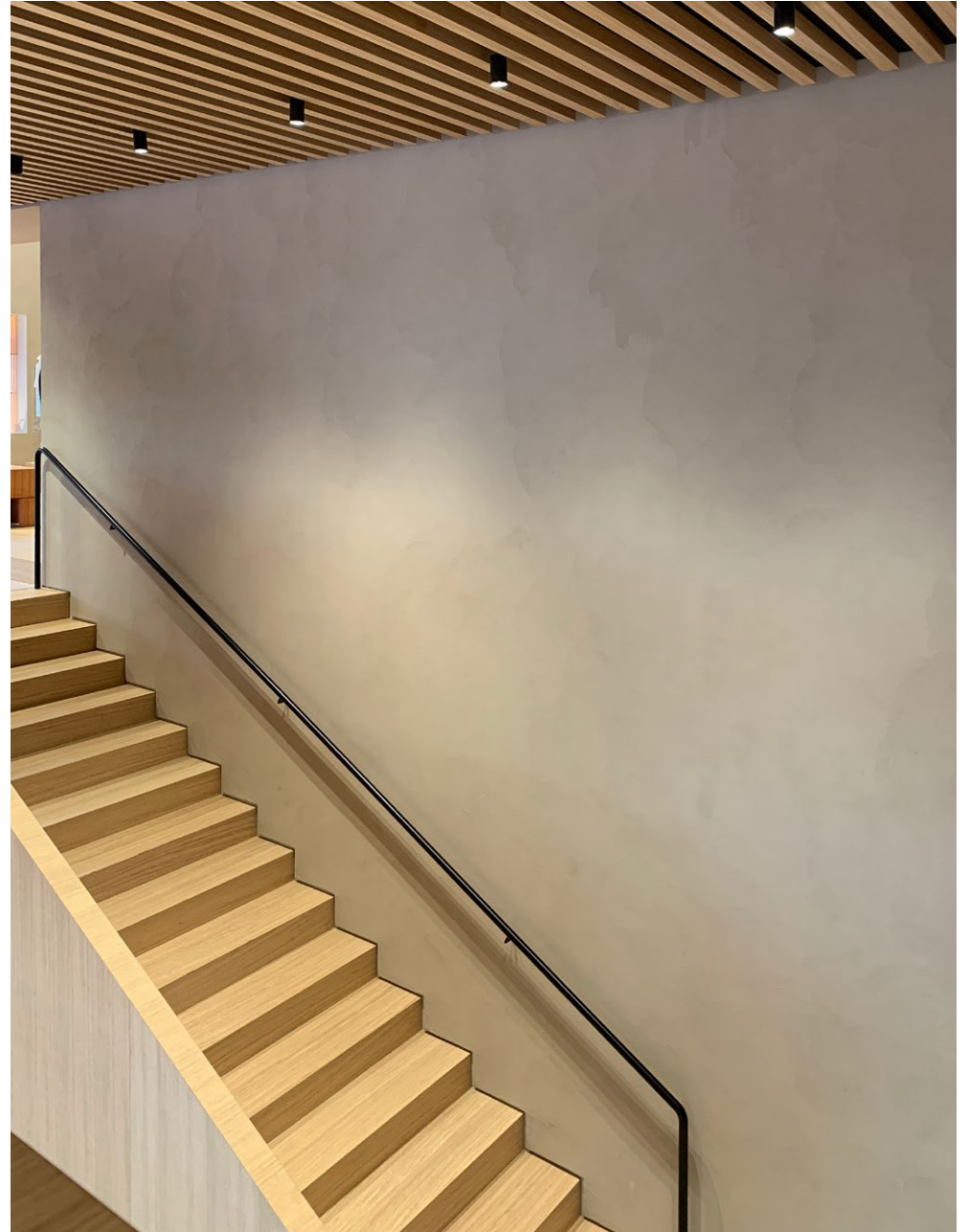
shop in Milan

Project by Casper Mueller Kneer Architects

Photos by Paul Riddle, Bally et al.











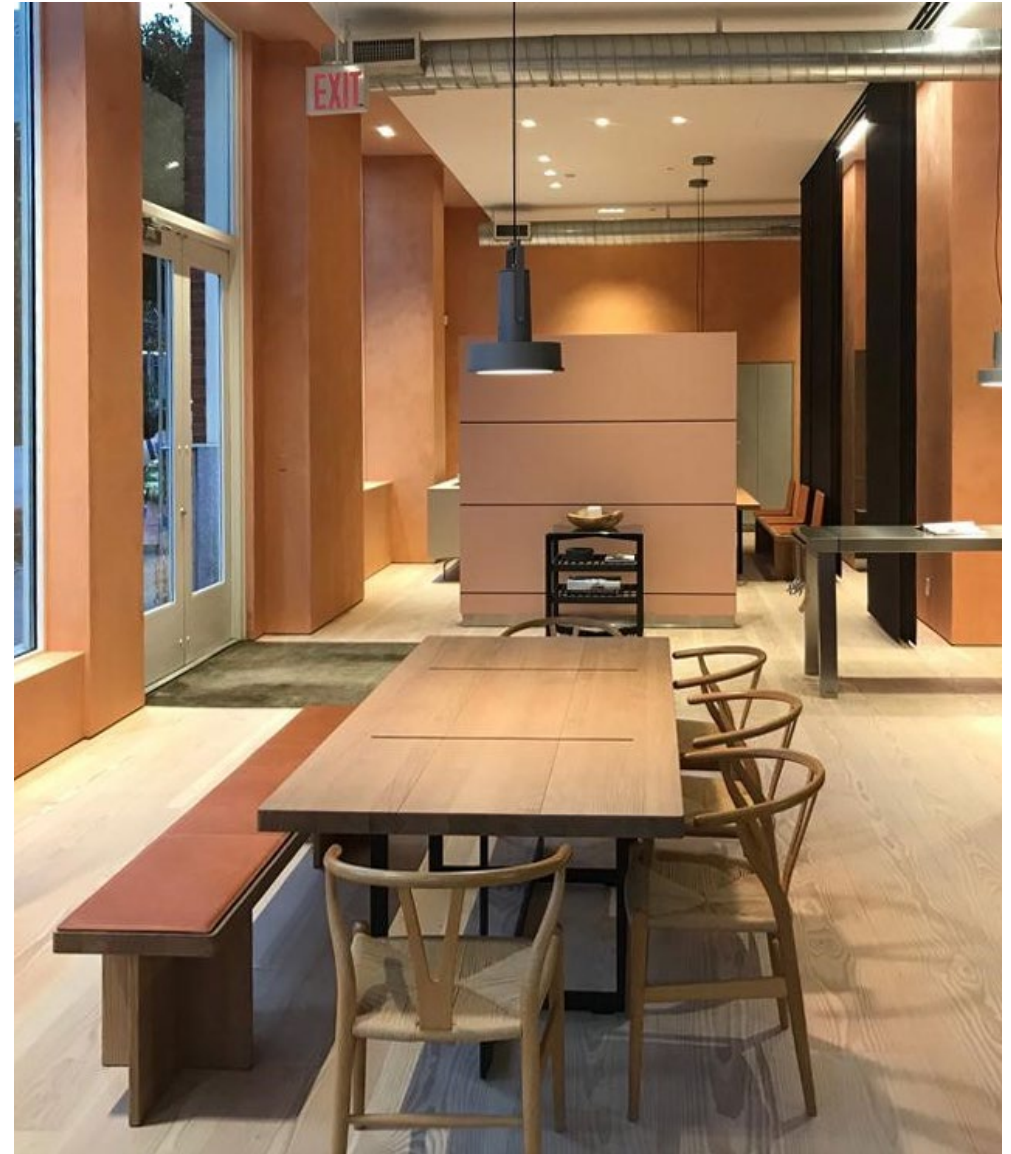








BULTHAUP  
Showroom in New York







BULHAUP  
in Brera, Milan











POLIFORM ADV  
photos by Omar Sartor



















AGAPE SHOWROOM  
Photos by Andrea Ferrari







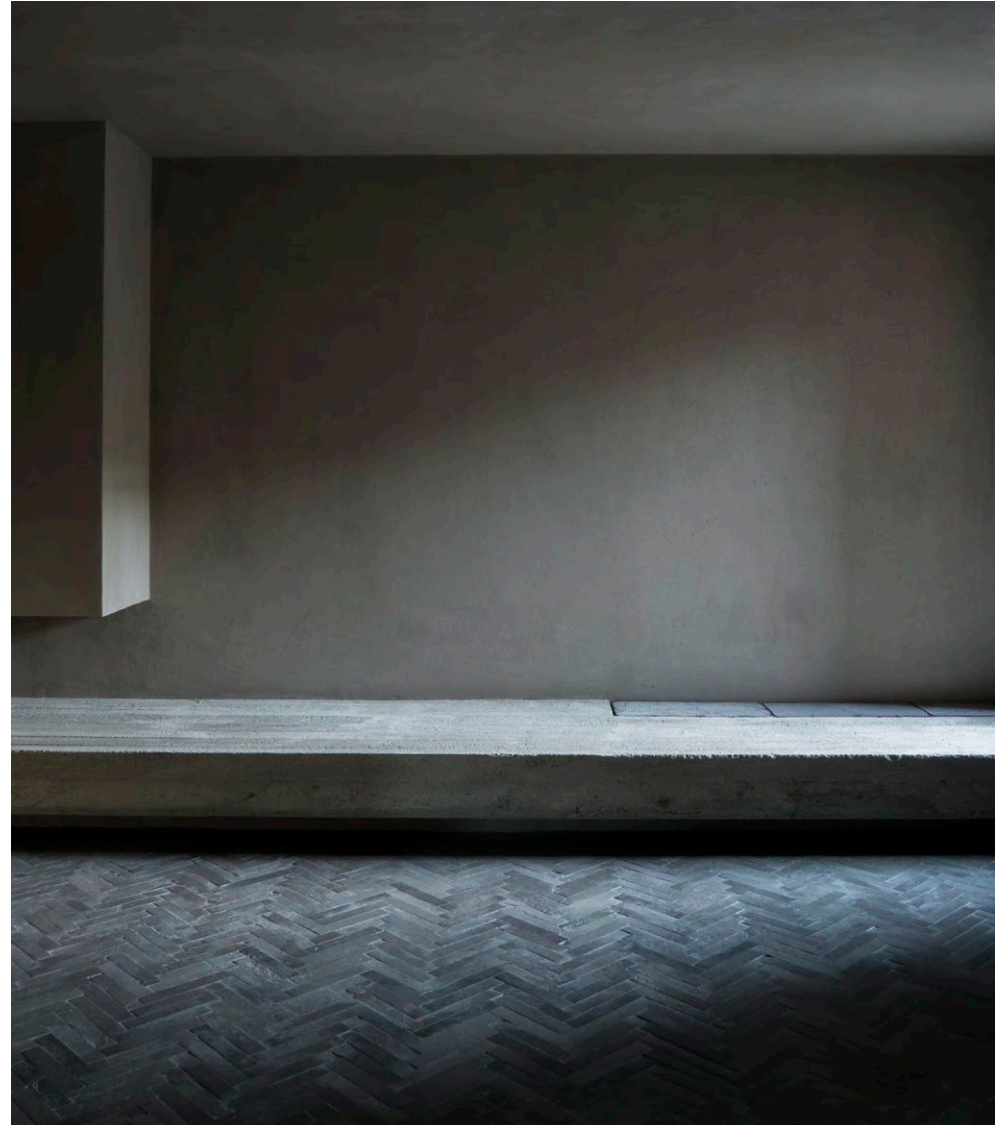




DOMUS RU

private apartment in Rome by MORQ

photos by Giulio Aristide











HOTEL DEI BARBIERI  
Rome, Project by MORQ  
photos by Giulio Aristide, Rinaldi, Maioino et al.



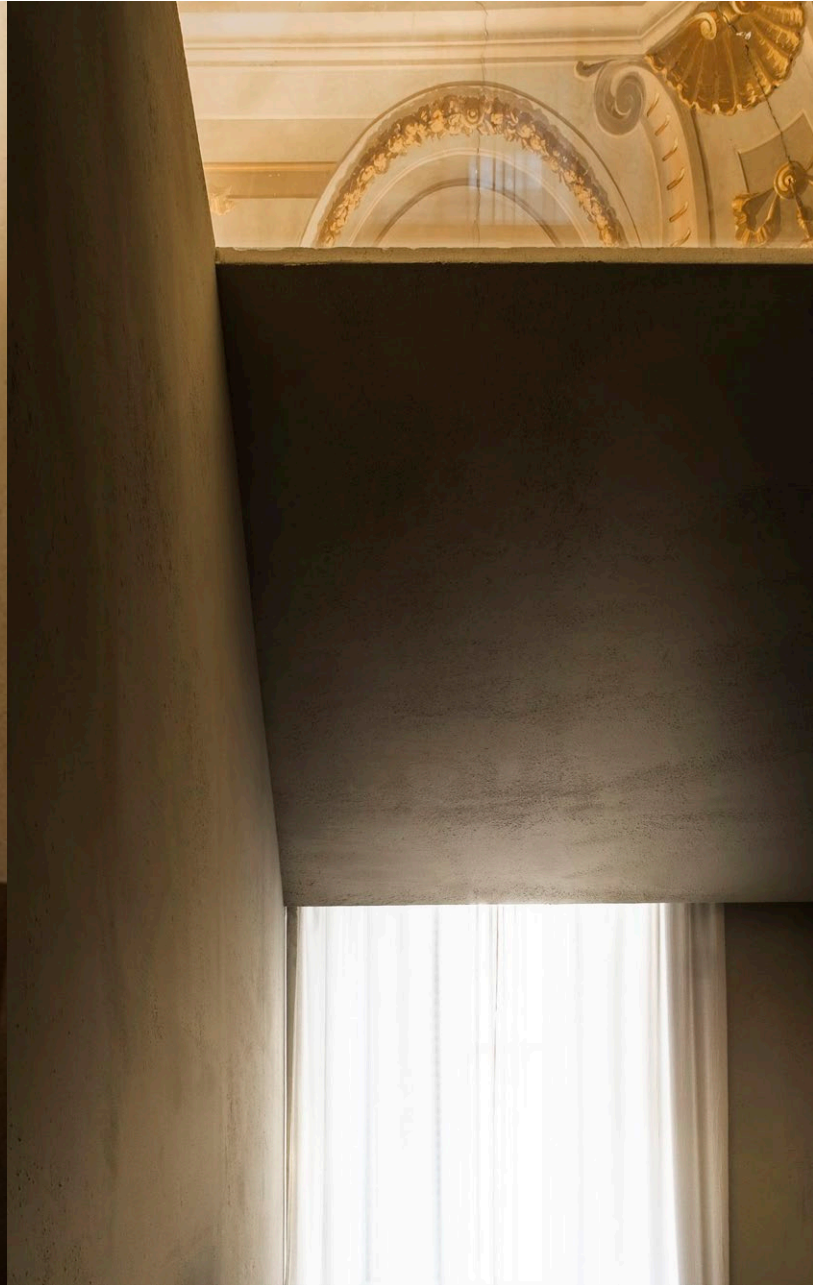
























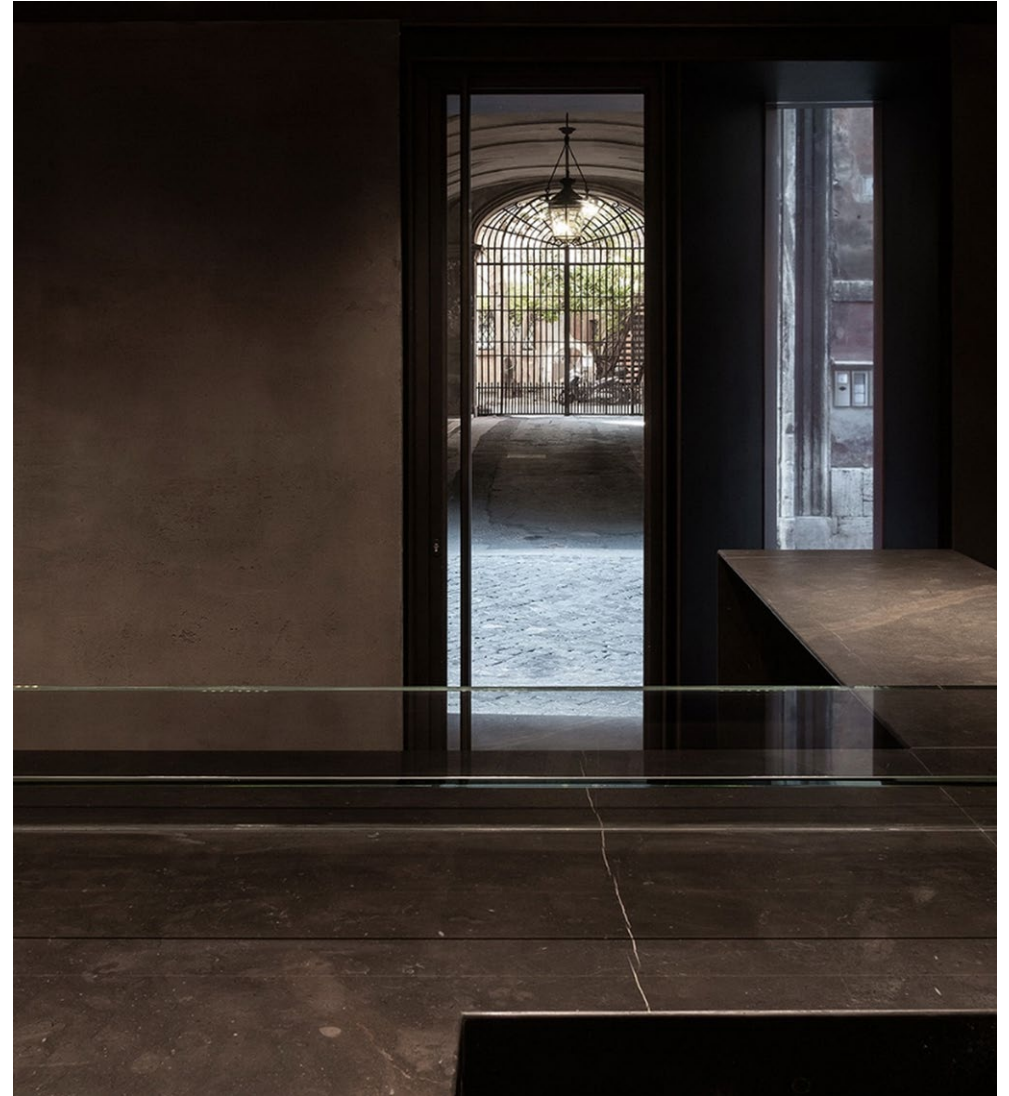




## BISTRO DEI BARBIERI

Rome

Project by MORQ, photos by Giulio Aristide















CAFFE DORIA

Rome

photos by Giampaolo Pauselli



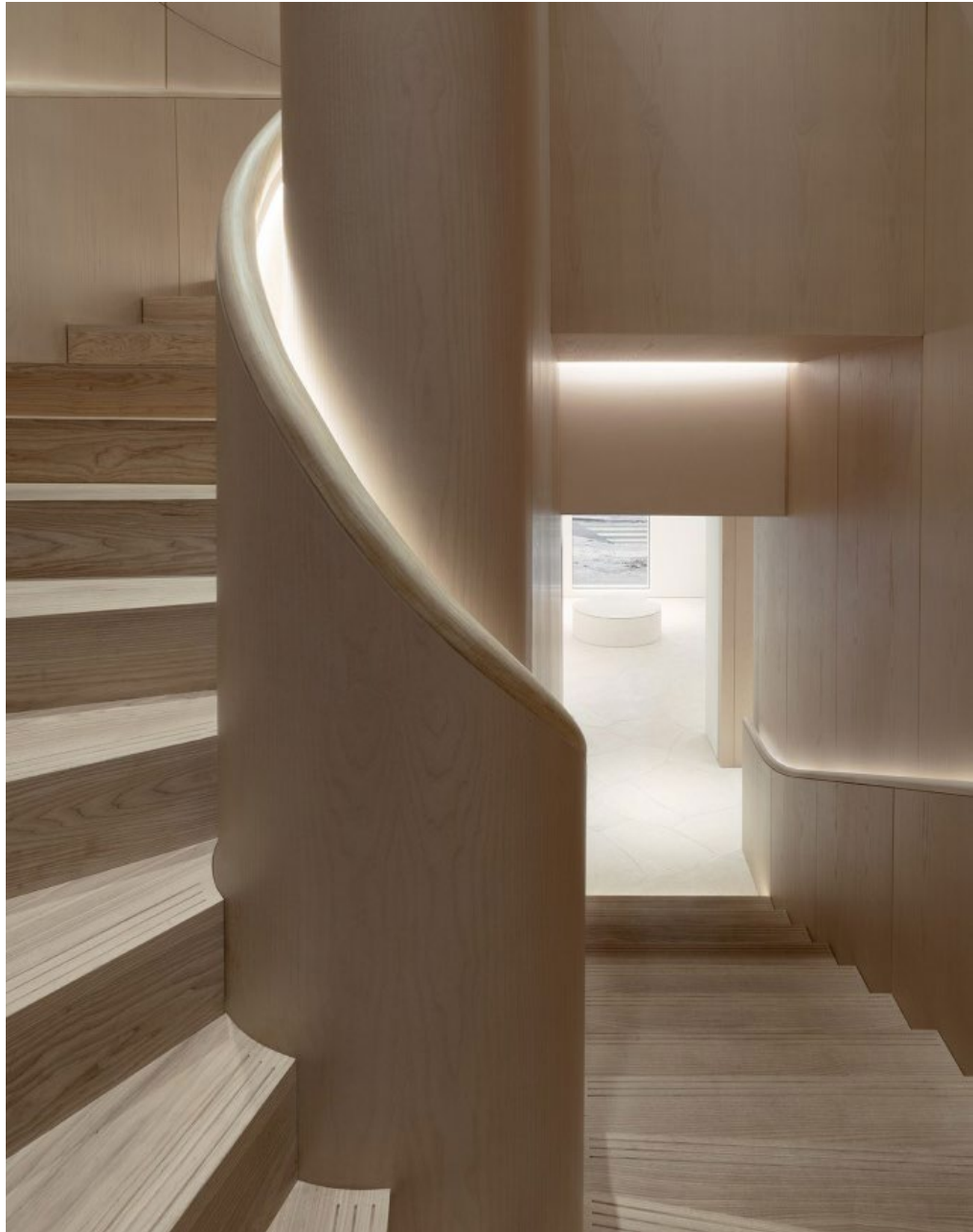












JIL SANDER  
Shop in Paris  
Project by John Pawson



















VILLA IN SAINT-TROPEZ  
by Atelier K Architectes



















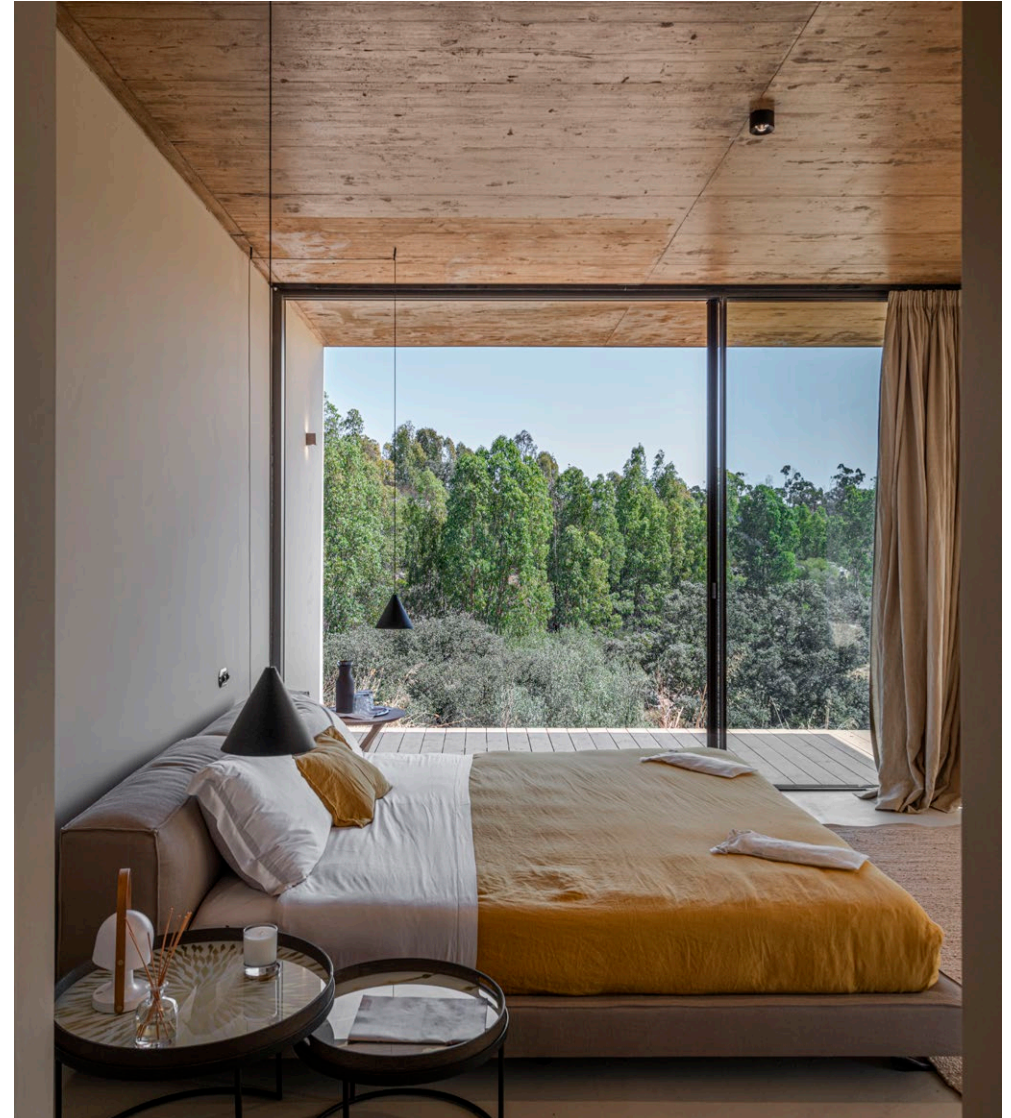








RESORT IN PORTUGAL  
Photos by João Guimarães











































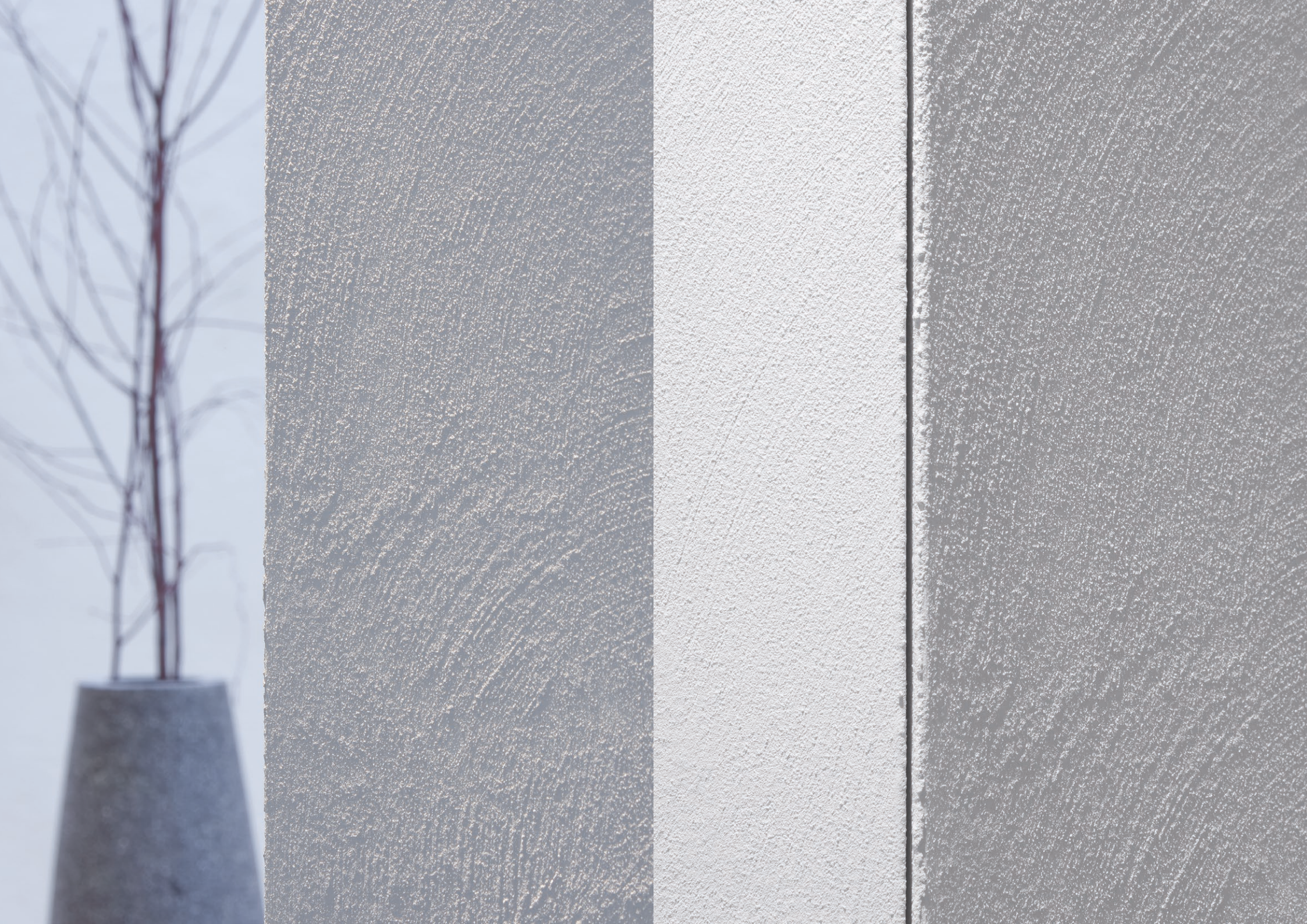




HENRY TIMI  
Showroom in Milan



















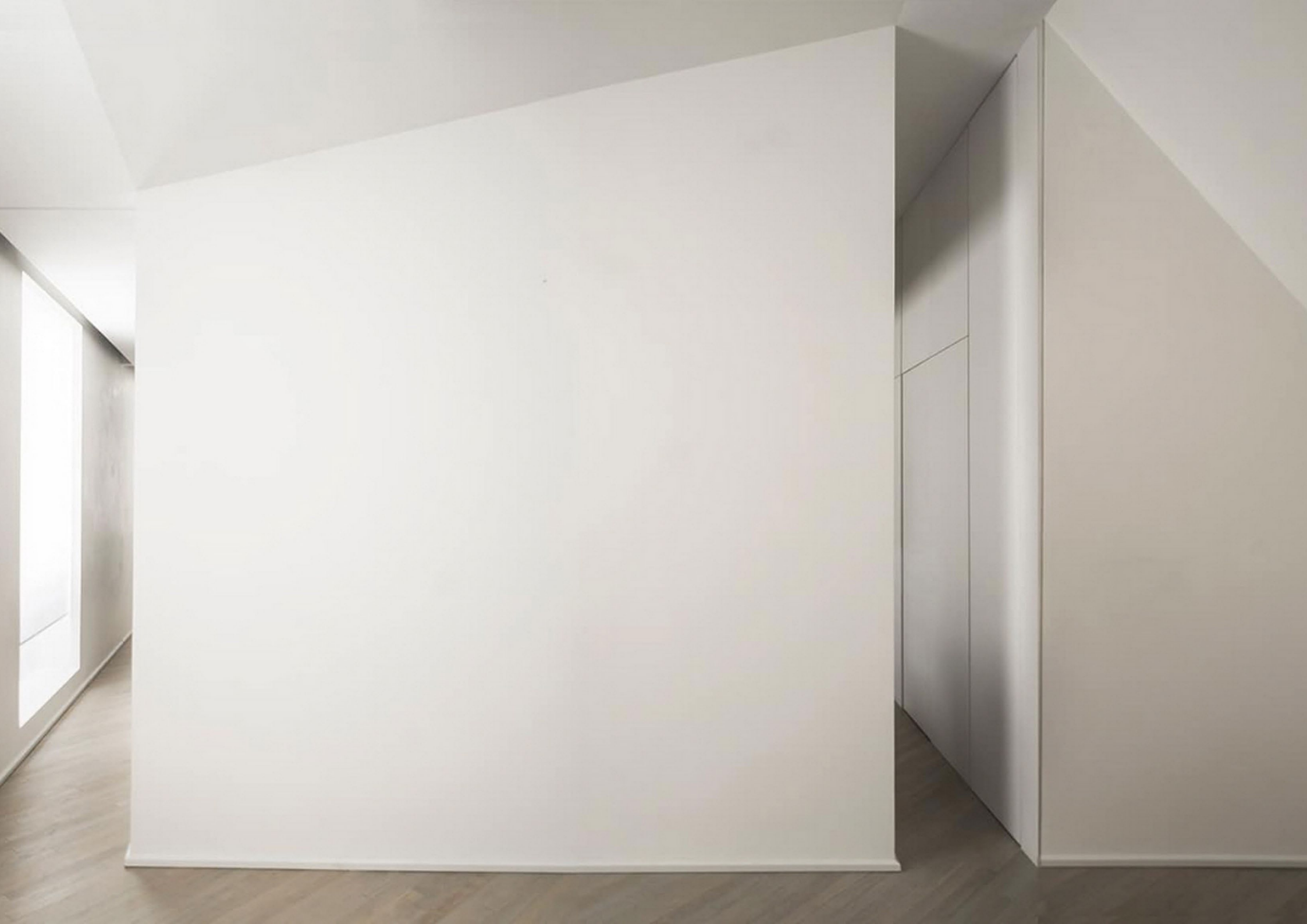
## CASA NUDA

Apartment in Rome by MORQ

Photos by Giulio Aristide and Simone Bossi





















BAXTER ADV

Photos by Andrea Ferrari et al.























## BAXTER

Salone del Mobile

Photos by James Stokes



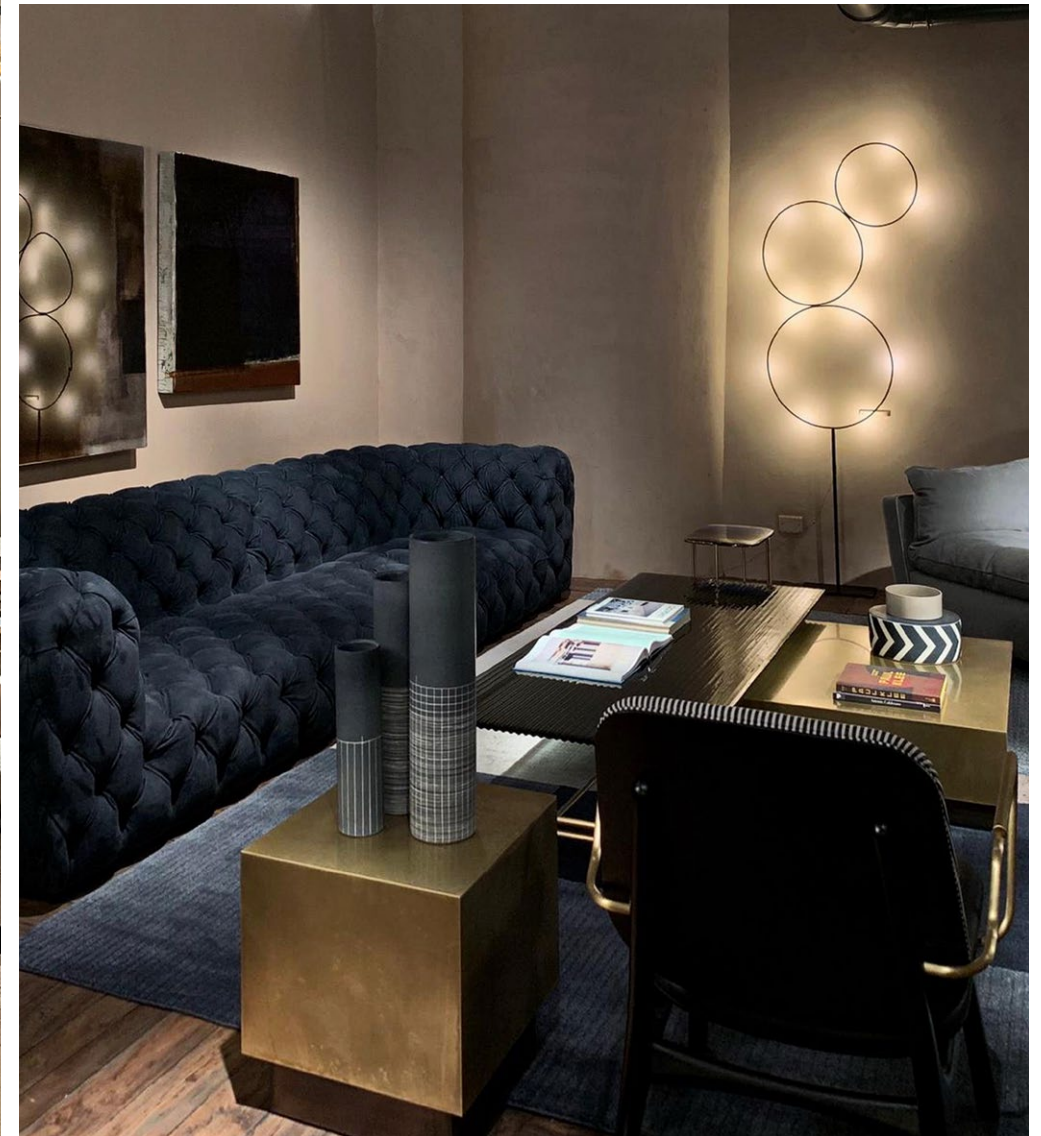








BAXTER SHOWROOM  
Rome  
Photos by Silvana Spera











A mustard yellow tufted sofa with a curved, rounded back and deep tufting on the seat and backrest. It is positioned against the textured wall.

A white armchair with a curved back and black legs, positioned to the left of the sofa.

A marble coffee table with a slatted top and a lower marble bench. The top surface holds a book titled "ALBERT OEHLEN" and an open magazine.

A tall black shelving unit with gold accents, featuring multiple shelves holding books, bottles, and a white vase.

A large potted cactus in a light blue pot, standing to the right of the sofa.

Two vertical light fixtures mounted on the wall, providing ambient lighting.

Track lighting mounted on the ceiling, with several spotlights directed towards the seating area.

A dark rug with a light-colored geometric pattern, covering the floor in front of the sofa.

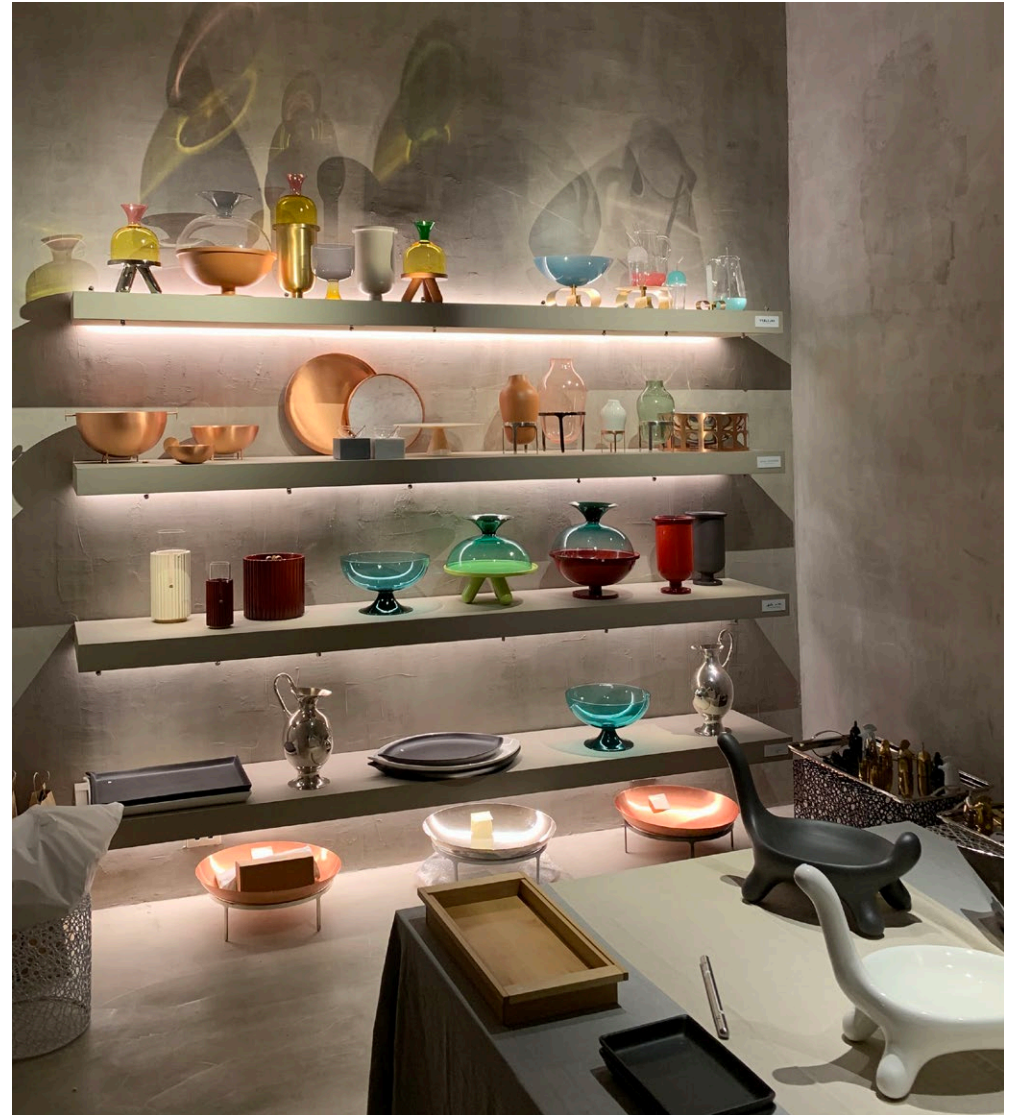








PAOLA C  
shop in Milan



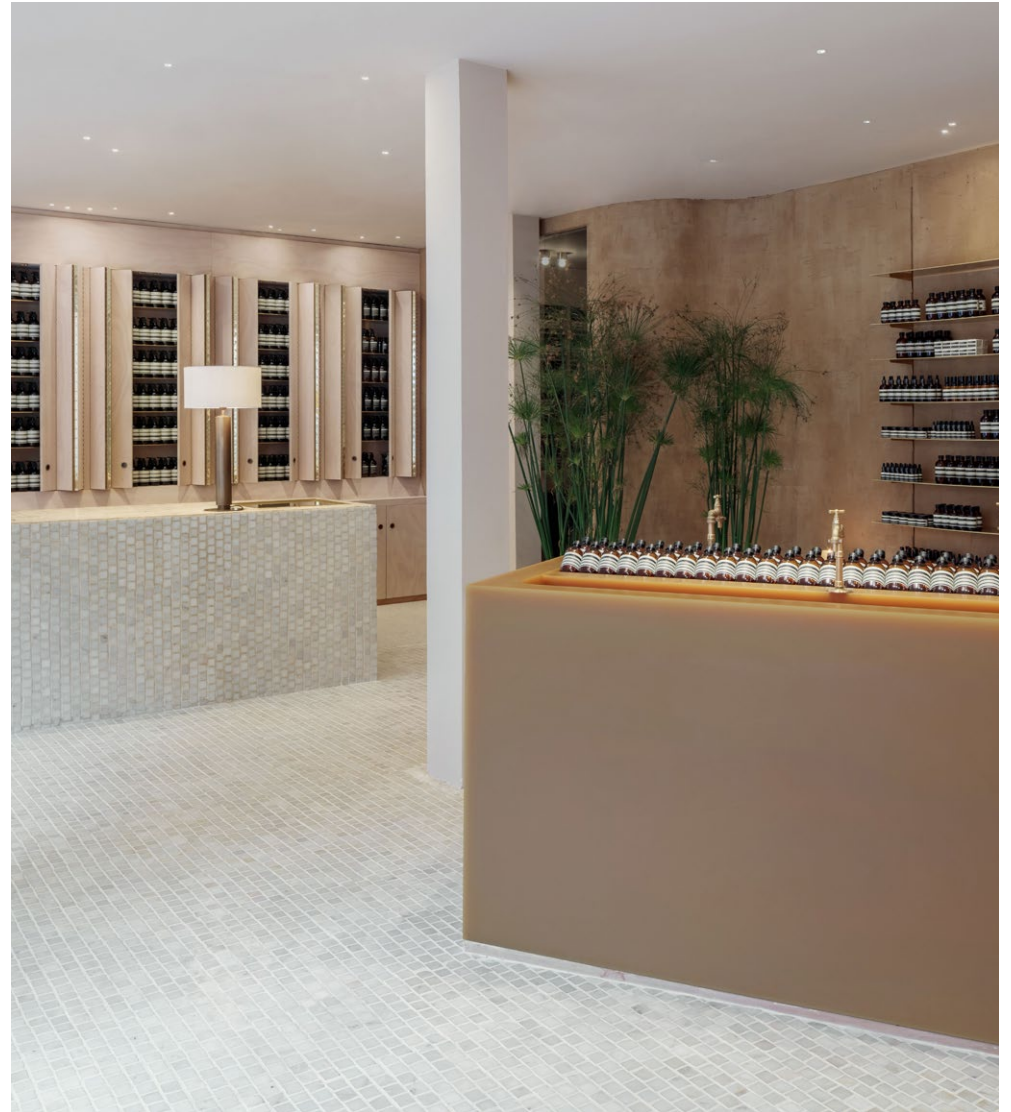








AESOP  
Shop in Toulouse



















## RITORNO

Private apartment in Rome by MORQ

Photos by Giulio Aristide and Max Zambelli



















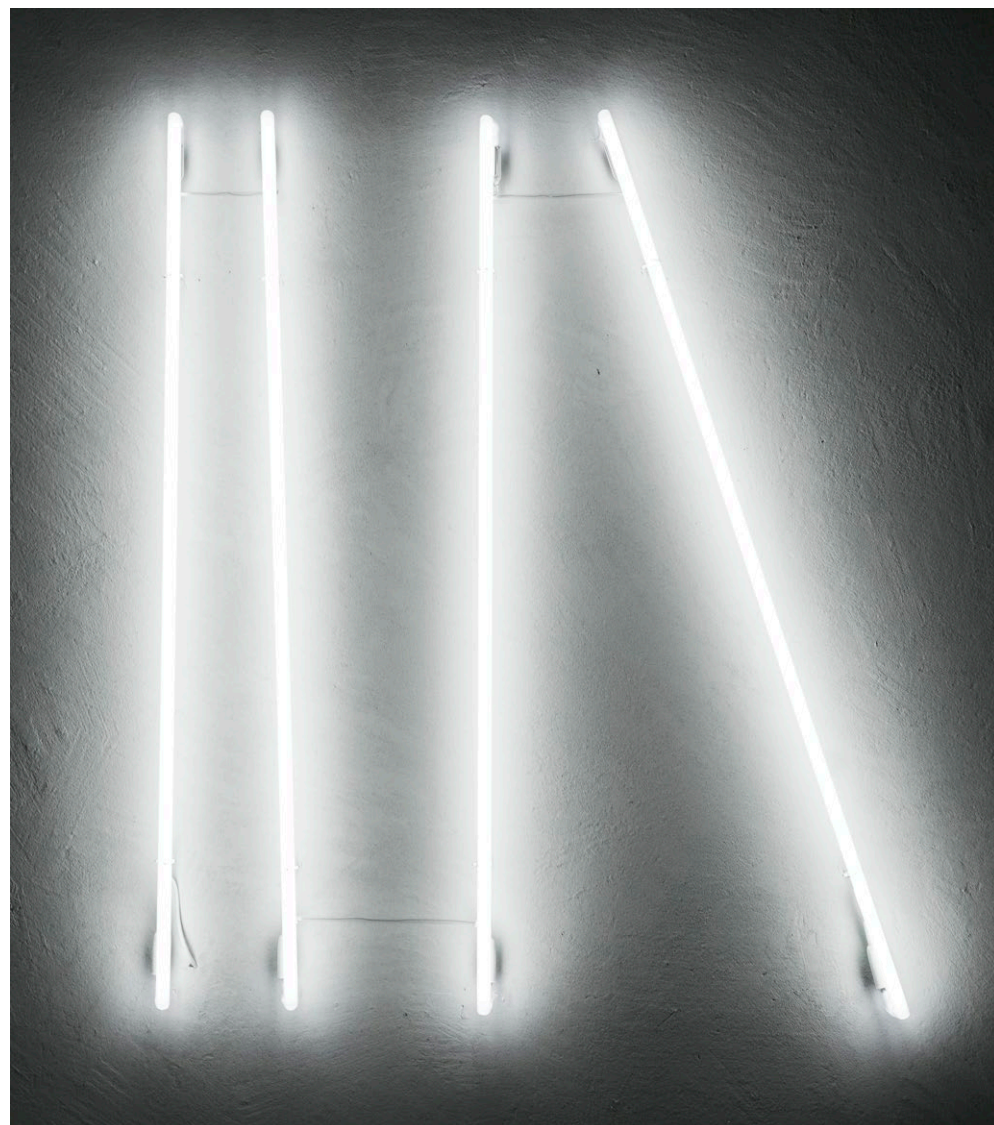




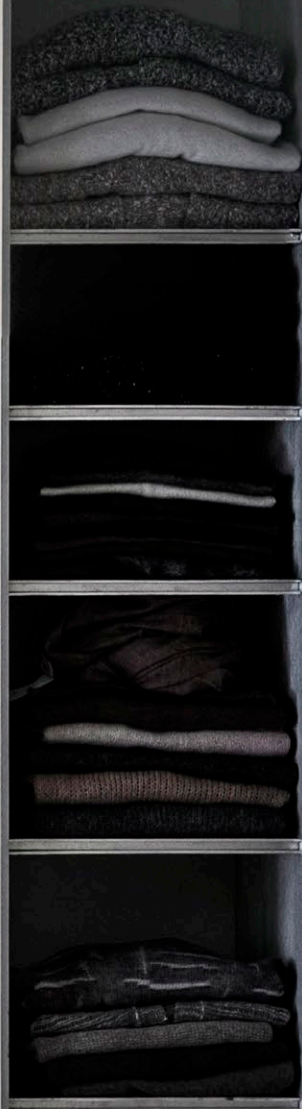
NIA BOUTIQUE

Shop in Rome

Project by MORQ, photos by Giulio Aristide











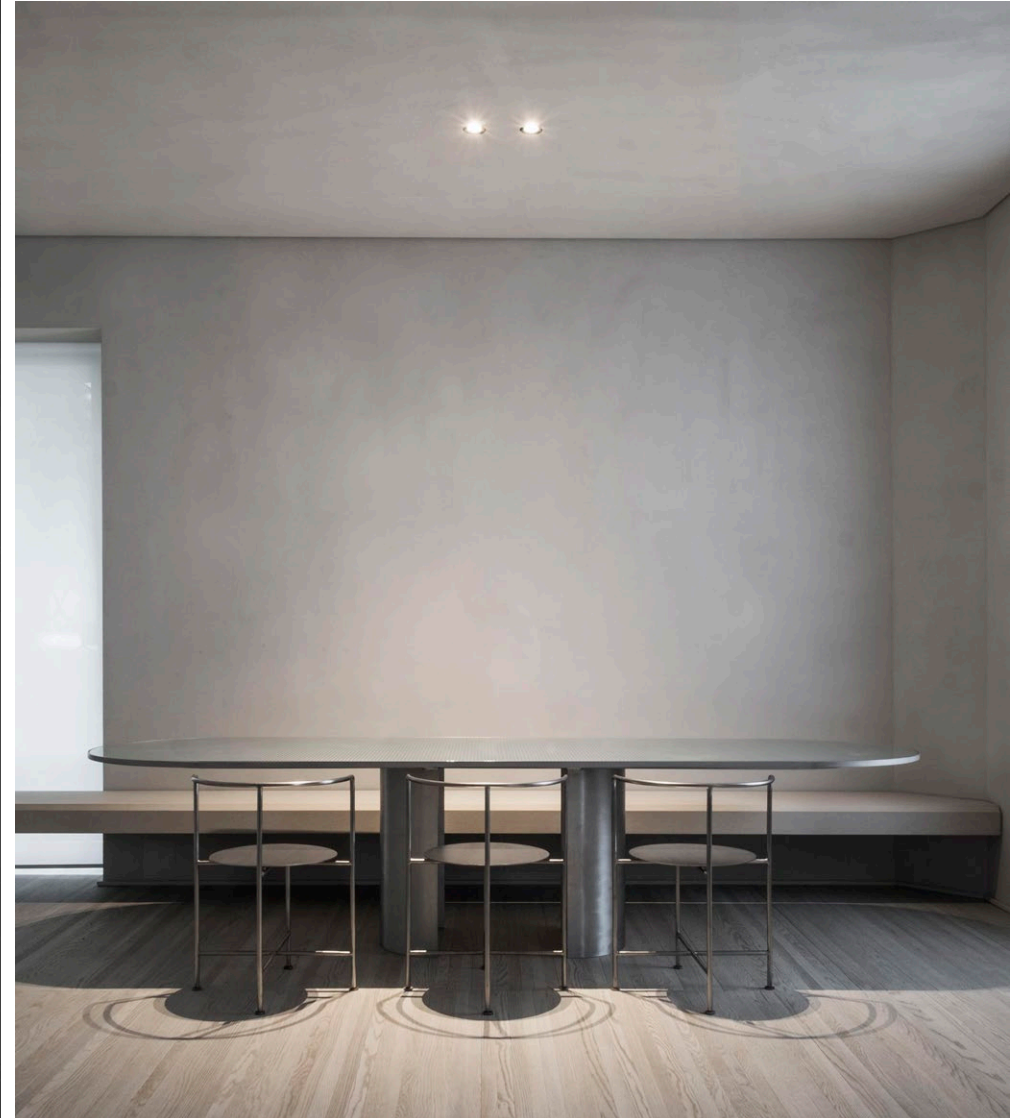




VILLA RICCIO

Rome

Project by MORQ, photos by Giulio Aristide















BORGO TURRITO  
Winery in Foggia  
by DDuM Studio















## CAFFETTERIA CA' PESARO

Coffee bar in Venice

Project by Baldessari e Baldessari, photos by Paolo Riolzi



















MONOGRAPH  
Lounge bar in Tbilisi  
Project by MOTIF & Proacte















MATTEO BRIONI

Headquarter in Mantua

Photo by Giuseppe Gradella et al.











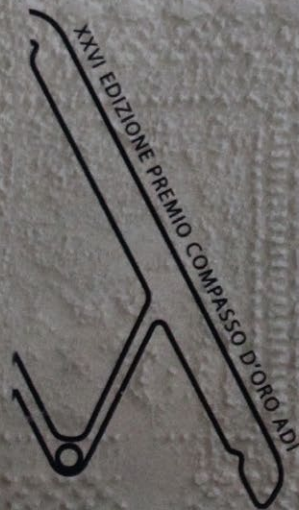












## MENZIONE D'ONORE

Prodotto  
**LA TERRA SECONDO  
MATTEO**

Designer  
**Studio Irvine**

Azienda  
**Matteo Brioni**

Giuria  
Denis Santachiara, *presidente*  
Luca Bressan, Virginio Briatore  
Jin Kuramoto, Päivi Tahkokallio

**ADI** ADI ASSOCIAZIONE  
PER IL DISEGNO  
INDUSTRIALE



# MATTEOBRIONI

Matteo Brioni srl

•Strada Comunale Ronchi 77 •46023 •Gonzaga •Mantova •Italy

•+39 (0)376 528862

•info@matteobrioni.com

•www.matteobrioni.com